

# MEADOWSLEA ANGUS SPRING BULL SALE



MEADOWSLEA  
ANGUS & SHEEP GENETICS



**32 2-year bulls**  
**70 yearling bulls**

**On-Farm Helmsman Auction**  
**Friday 6th October 2023, 1pm**  
*and*

**Online at**

**[www.meadowslea.co.nz](http://www.meadowslea.co.nz)**

**from Sunday October 1st**



*Register early online to qualify for*

**Interest Free finance**

NO REPAYMENTS FOR 6 MONTHS

# NZ Trait leaders for CALVING EASE and SHORT GESTATION

These two senior sires, now aged 12 and 13 years, have had a profound impact on the Meadowslea stud and the bulls in this catalogue, with a large selection ideally suited to heifer and dairy cow mating.

This is a real endorsement of the emphasis we place on fertility and maternal traits in our breeding programme.



**MEADOWSLEA F540** – now 13 years old. Outstanding maternal and fertility traits. He ranks in the top 10% of the breed for calving ease, short gestation, low birth weight, short days to calving, milk and rib fat, as well as IMF%. He features in the pedigrees of a big percentage of the bulls on offer. **SEMEN AVAILABLE**



**MEADOWSLEA MEAT MACHINE G914** - now 12 years old and exceptionally well-muscled. He is a breed trait leader for calving ease and ranks in the top 5% of the breed for low birth weight. Exceptional easy doing attributes with rib and rump fats in the top 1% for the breed. His easy calving traits have been inherited by many of the bulls in this catalogue.

# FRIDAY 6th OCTOBER

## 2023, 1pm,

### Mt Cook Road, Fairlie

#### VENDOR:

##### Meadowslea Genetics Ltd

Phone: 03 685 8027  
Mobile: 027 2299 760  
Email: giddingsfamily@xtra.co.nz

#### PARTICIPATING COMPANIES:

##### PGG Wrightson

John McCone	027 229 9375
Simon Eddington	027 590 8612
Callum McDonald	027 433 6443
Joe Higgins	027 431 4041
Greg Uren	027 431 4051
Bruce Dunbar	027 595 6473
Barry Fox (Dairy)	027 439 3317

##### Carrfields Livestock:

Todd Wells	Southland	027 236 7367
Matt McBain	Southland	027 306 5807

##### Hazlett:

Callum Dunnett	027 462 0125
Madison Taylor	021 656 851
Hamish Zuppichich	027 403 3025
Snow Buckley	027 561 4652
Don Borlase (Dairy)	027 561 4025
Dean Cox (Dairy)	027 561 5007
Greg Shearer (Fairlie)	027 476 6769
George Mannering	027 462 0182
Guy Martin	027 538 3741

##### Rural Livestock:

Anthony Cox	Stud Stock	0272 083 071
Donald Cooke		0274 730 854
John Harrison		0272 262 964
Quinten Botha	South Canterbury	0274 730 885
George Coull		0276 855 702
Aaron McCall		027 685 5702

##### NZ Farmers Livestock

Regan Laughton	027 440 6722
----------------	--------------

**TB Status – C10**

#### ATTENTION ALL BUYERS:

Can you please ensure you bring your NAIT Number to the sale.



# MEADOWSLEA SPRING BULL SALE



**Friday 6th October 2023 1pm**

**Online and On-Farm,  
State Highway 8, 5km west of Fairlie  
Online Bidding opens with  
Video Release Sunday 1st Oct, 7pm**

## **Sale Format**

The sale will be conducted as a Helmsman-style auction, meaning that all lots are for sale simultaneously. This is to allow for the participation of those in attendance, as well as those online. The sale will be hosted on our own yourbid platform and accessed through our website [www.meadowslea.co.nz](http://www.meadowslea.co.nz). Prior to the sale, all lots will be filmed and available for viewing up until sale day on the Meadowslea website.

**Bulls are available for viewing in the paddock anytime** – just call 027 229 9760 to arrange a time.

**Registration for those in attendance** will be at the on-farm office, where a copy of the conditions of sale will be posted.

**Registration for those online** will be through the Meadowslea website, where the conditions of sale will also be available.

**Buyers** will receive a buyer number as they register which will accompany each bid. Buyers registering online will receive a buyer number when they register for the sale which will automatically accompany each bid they place, whether they do so at home on their computer, or through their smart phone while in attendance. Those in attendance may also bid by writing on the supplied bidding cards and handing them in to the on-farm office staff. All live bids and all lots will be visible at all times, both online and on a big screen on-farm.

**Online registration is available now** and we encourage everyone to visit our website [www.meadowslea.co.nz](http://www.meadowslea.co.nz), to register, and then place practice bids on the demonstration lots on the auction page.

**Online videos of each lot** with accompanying commentary will be released both on our website and on facebook on Sunday Oct 1st at 7pm. This video will include footage of every bull in the catalogue with comments and background information from the Meadowslea team and will be available for viewing right up until the conclusion of the sale.

**Online bidding** will be open from 7pm on Sunday Oct 1st until the conclusion of the sale.

**On Oct 6th**, Sale Day, the on-farm registration and bidding will open at 11am. **Livestreaming with interactive viewing will commence at 12.30 pm** with a walk through of all the pens, with commentary from the vendors and genetic specialists. Requests to review particular bulls can be made through the web-site chat box or by telephone or text to the vendors or stock agents in attendance. This will continue throughout until the conclusion of the sale.

**A live screen on the website** will show all lots alongside their current prices and the buyer number of the bidder who holds that lot. On-farm attendees will be able to view on a big screen on site. Bids will be displayed on a computer or smart phone screen in the following colours

Example:

**\$2500** Displayed in **Red** denotes the Vendors reserve and indicates there has been no bid

**\$3000** Displayed in **Blue** means an active bid has been received

**\$3500** A new Bid has been Received within the last 2 minutes on this lot

**\$3500** The holder of the leading bid will have the lot number highlighted in Green on their computer or their smart phone when logged in.

**The sale will run until 2pm on Oct 6th.** After this time the sale will conclude once there has been a period of at least 2 minutes without any bid being received on any lot. If another bid is placed on any lot during the 2-minute period, then time is extended and bids can be received on all lots for a further 2 minutes. This process will be repeated until a clear 2 minutes passes without any bids on any lot at which time the sale will conclude.

**Final Time** will be called clearly by the commentary team who will use their discretion to ensure all bidders are satisfied.

All updates will be posted on our website, as will an up-to-date version of this document.

**Rebate Purchasing Commission.** There will be no booking company in attendance and all buying companies will be responsible for booking of their own clients' purchases. Participating companies will be paid a purchasers' rebate commission as follows:

- 1 9% rebate commission paid to the nominated buying company, provided the vendor is advised of the purchase's intention to buy prior to the commencement of the on-farm sale, or before the purchaser commences bidding online.
- 2 3% rebate commission paid to the nominated buying company when the vendor has **NOT** been advised of the purchaser's intention to buy prior to the commencement of the on-farm sale, or before the purchaser commences bidding online.

# FOREWORD

Meadowslea Angus Stud was established in 1985 with the purchase of capital stock females from Turihaua Station, Gisborne.

The herd today comprises 550 cows run on tussock country west of Fairlie at an altitude of 1500 to 2500 feet. The cows are run entirely under commercial conditions with all heifers calving as 2-year-olds or they are culled. Strong emphasis is placed on cow fertility and ease of calving with any dry cows culled.

Selection criteria is for easy-fleshing, moderate-framed cattle with plenty of meat and adequate fat cover, that will shift and perform in the South Island hill country. Sires used are all NZ-bred, with real emphasis placed on structural soundness, longevity, and fat cover. Over the last 13 years our stud cows have grazed next door on “Berkley Downs” native tussock blocks, and this has further tested their hardiness and constitution.

Sale bulls have spent 120 days on winter feed. The yearlings have been on fodderbeet where they have gained over 1 kg / day while the 2-year bulls cruised through the winter on kale. Both mobs were shifted onto grass in the second week of September.

In 2019 we had 190 stud heifers born and after losing 2 over the winter we mated all 188 on hand. For the second year in a row we had the same outstanding conception rate with only 3 empties. We believe it is the strong focus that we place on the maternal and fertility traits that is driving these outstanding results. Furthermore, the performance of our young R2-year heifers is leading the progress within the herd, and you will note that many of the bulls on offer are bred from these outstanding young cattle – either out of the 2-year heifers or bred by yearling bulls.

Strong maternal and fertility traits are the main driver of profitability in any beef herd, and they continue to be the major selection criteria in our breeding programme.

We always keep a selection of very good 2-year-old Angus bulls for this spring sale and this year is no exception, with some particularly meaty, easy-doing bulls on offer, many suited to heifer mating.

The yearlings include some top picks which will develop in to very good herd sires and there is a very good selection of low birth weight bulls suitable for heifer mating.

Meadowslea is a closed herd. All appropriate steps are being taken to ensure biosecurity is maintained at all times for ourselves and our clients.

All bulls tested clear and vaccinated for BVD. Scrotal contents and prepuce palpated with no abnormalities found.

We wish you well with your purchases and as always stand behind them 100%.

*David Giddings*

## **Disclaimer:**

The BREEDPLAN Estimated Breeding Values (EBVs) contained within this sale catalogue were compiled by the Agricultural Business Research Institute (ABRI) from the data supplied by breeders. Neither Angus NZ nor ABRI oversee or audit the collection of this data.

## **Structural Assessment**

The two-year bulls have undergone independent structural assessment by Bill Austin using the Australasian Beef Class system.

Results will be published online at  
**[www.meadowslea.co.nz](http://www.meadowslea.co.nz)**

# Finance available for MEADOWSLEA bulls!

You must pre-register to qualify -  
**visit [www.meadowslea.co.nz/2023-spring-bull-sale](http://www.meadowslea.co.nz/2023-spring-bull-sale)**

We are offering finance to assist clients to secure top Angus bulls for both beef and dairy operations. With cashflow situations tight right across the industry this year, we believe this is a way of helping our clients maintain the quality of their genetics. Meadowslea have arranged funding and will cover the interest for the first six months, meaning purchasers will have no interest costs and make no repayments over that period. "Genetic gain is the cornerstone of any breeding operation, and is even more important during tougher times as there is no room for sub-par performance."

To qualify for these interest-free terms, buyers need to register before the sale, either through the website **[www.meadowslea.co.nz/2023-spring-bull-sale](http://www.meadowslea.co.nz/2023-spring-bull-sale)** or by contacting Meadowslea directly by phone or email.  
Terms and conditions apply.



# WE'LL BACK YOUR BULL

Meadowslea will  
cover your interest  
for 6 months in the  
way of a cashback\*

MEADOWSLEA



**SIGN UP  
PRESALE**

You must be signed up  
presale to take advantage  
of this outstanding offer

\*TERMS AND CONDITIONS APPLY



FREEPHONE  
**0800 223 070**



20th September 2023

On the 20th September 2023

I palpated the scrotal contents and prepuce of the bulls.

There were no abnormalities found.

The scrotal circumferences were measured and recorded.

Glenda Kellahan (B.V.Sc.)

**Accounts Office**

Ph: 03 687 9381

Fax: 03 687 9380

Email: [office@orangivet.co.nz](mailto:office@orangivet.co.nz)

PO Box 4013,

Highfield, Timaru

**Geraldine**

**Veterinary Centre**

G.K. Kellahan B.V.Sc.

A.D. McCullough B.V.Sc

27 Wilson Street, Geraldine

Ph: 03 693 1163

Fax: 03 693 1161

**Fairlie**

**Veterinary Centre**

Allandale Road, Fairlie

PO Box 26, Fairlie

Ph: 03 685 8407

Fax: 03 685 8904

**Highfield**

**Veterinary Centre**

B.M. Gregor B.V.Sc.

G.A. Gregor V.S.

S.R. Newmarch B.Sc, B.V.Sc.

265 Otupua Road, Timaru

PO Box 4013, Highfield

Timaru

Ph: 03 684 5646

Fax: 03 688 4397

## Aorangi Vets - Fairlie

*"Your Animals Our Expertise"*

Your first choice of vets in the Mackenzie District for all  
your animal health requirements.

Phone 03 685-8407

## ANGUS NZ BREED AVERAGE EBVS FOR 2021 BORN CALVES

CED	DTRS	GL	BW	200	400	600	MCW	Milk
<b>+1.7</b>	<b>+0.9</b>	<b>-4.2</b>	<b>+4.4</b>	<b>+41</b>	<b>+76</b>	<b>+98</b>	<b>+88</b>	<b>+14</b>

SS	DC	CW	EMA	Rib Fat	Rump	RBY (%)	IMF%
<b>+1.9</b>	<b>-3.9</b>	<b>+48</b>	<b>+3.1</b>	<b>+1.1</b>	<b>+1.1</b>	<b>+0.4</b>	<b>+0.8</b>

EBV tables in this catalogue represent the top ■ 25% and ■ 50% for each trait except where Mature cow weight is shaded it indicates ■ desirable for under 600 Day weight and ■ exceptional for under 400 Day weight.

INDEXES
<b>SR</b>
<b>+\$ 107</b>
<b>HD</b>
<b>+\$ 103</b>

# Downlands Deer & **STUDSTOCK**

**DEDICATED TO WORKING AS A TEAM**



**CONTACT: KRIS ORANGE**  
**TELEPHONE 03 693 8013**  
**MOBILE 021 322 622**

*NZ Stud Stock Specialists*

# BREEDING

# BETTER

# BUSINESS

As part of New Zealand's largest Livestock network, our team of Genetics Specialists have more contacts, more reach and more market influence.

We provide more practical advice and more technical expertise. And, with the country's largest network and most popular sales events, we bring together more buyers and more sellers, delivering more value for all.

**If you're looking for a planned approach to success, give us a call today.**

**SIMON EDDINGTON**

Genetics Representative / Ashburton  
0275 908 612

**GREG UREN**

Livestock Representative / Temuka  
0274 314 051

**NEIL CARTER**

Livestock Representative / Waimate  
0272 821 104

**CALLUM MCDONALD**

Livestock Representative / Invercargill  
0274 336 443

**JOHN MCKONE**

Auctioneer / Amberley  
0272 299 375

**BRUCE DUNBAR**

Livestock Representative / Fairlie  
027 595 6473

**BARRY FOX**

Livestock Representative / Oamaru  
0274 393 317

**VICTOR SCHIKKER**

Livestock Representative / Ashburton  
0275 908 061

**BERNIE COX**

Livestock Representative / Ashburton  
0274 770 551

**JOE HIGGINS**

Livestock Manager / Timaru  
0274 314 041

**CAM GRAY**

Livestock Representative / Fairlie  
027 494 0572

**ANDY CUNNINGHAM**

Livestock Representative / Geraldine  
0275 668 243

pggwrightson/livestock  fb.com/pgwlivestock  instagram.com/pgwlivestock

# SEPTEMBER 2023 TRANSTASMAN ANGUS CATTLE EVALUATION PERCENTILE BAND FOR ALL 2021 BORN CALVES

Calv-Ease				Birth		Growth				Fertility				Carcase				Index			
Dir	Dtrs	GL	Bwt	200	400	600	Mwt	Milk	SS	cm	days	Cwt	EMA	Rib	P8	RBV	IMF	SRI	API	HDT	
%				days		kg						kg		sq.cm		mm		%		\$	
Top 1%	+10.6	+8.8	-9.3	+0.1	+109	+142	+141	+25	+4.2	-6.7	+82	+10.2	+4.9	+6.0	+1.6	+3.7	+169	+191	+140		
Top 5%	+8.8	+6.9	-7.5	+1.5	+97	+129	+124	+21	+3.4	-5.8	+71	+7.5	+3.7	+4.3	+1.3	+2.7	+151	+166	+132		
Top 10%	+7.4	+5.8	-6.6	+2.2	+92	+121	+116	+20	+3.0	-5.4	+65	+6.4	+3.0	+3.5	+1.1	+2.2	+142	+154	+127		
Top 20%	+5.8	+4.3	-5.7	+3.0	+86	+113	+106	+18	+2.6	-4.9	+59	+5.2	+2.3	+2.6	+0.8	+1.7	+130	+138	+120		
Top 30%	+4.4	+3.1	-5.1	+3.5	+82	+107	+99	+16	+2.4	-4.5	+55	+4.4	+1.9	+2.0	+0.7	+1.3	+122	+126	+115		
Top 40%	+3.2	+2.1	-4.6	+4.0	+78	+102	+94	+15	+2.1	-4.2	+51	+3.7	+1.5	+1.5	+0.5	+1.0	+114	+115	+109		
Top 50%	+2.0	+1.1	-4.1	+4.4	+75	+98	+88	+14	+1.9	-3.9	+48	+3.0	+1.1	+1.1	+0.4	+0.7	+107	+106	+104		
Top 60%	+0.8	+0.0	-3.6	+4.9	+72	+94	+83	+13	+1.7	-3.6	+45	+2.4	+0.7	+0.6	+0.3	+0.5	+100	+95	+99		
Top 70%	-0.4	-1.0	-3.2	+5.3	+69	+89	+77	+12	+1.5	-3.3	+41	+1.8	+0.3	+0.1	+0.2	+0.2	+93	+85	+93		
Top 80%	-2.1	-2.3	-2.6	+5.8	+65	+84	+70	+11	+1.2	-3.0	+37	+0.9	-0.2	-0.5	+0.0	-0.1	+84	+71	+86		
Top 90%	-4.6	-4.2	-1.7	+6.5	+60	+76	+61	+9	+0.8	-2.5	+31	-0.2	-0.9	-1.3	-0.3	-0.6	+72	+52	+76		
Top 95%	-6.7	-5.8	-0.9	+7.1	+55	+70	+53	+7	+0.4	-2.0	+26	-1.1	-1.4	-2.0	-0.5	-0.9	+63	+39	+67		
Top 99%	-11.2	-9.5	+0.8	+8.3	+45	+57	+38	+4	-0.2	-1.2	+12	-2.9	-2.6	-3.5	-1.0	-1.6	+45	+15	+48		

Based on the results of the  
September 2023 TACE analysis

▲ Negative (lower) values more favourable

▲ Negative (lower) values more favourable

# 2 YEAR OLD ANGUS BULLS

## Lot: 1 MEADOWSLEA S521 <sup>PV</sup>

Birth Date: 14/08/21 ID No: 19134021521

MEADOWSLEA K904

MEADOWSLEA N119 <sup>SV</sup>

MEADOWSLEA E350

TURIROA 14830 (ET) <sup>SV</sup>

MEADOWSLEA P702 <sup>SV</sup>

MEADOWSLEA L117



INDEXES	
SR	HD
+\$83	+\$82

### SEPTEMBER 2023 TRANSTASMAN ANGUS CATTLE EVALUATION

CED	DTRS	GL	BW	200	400	600	MCW	Milk
-1.0	+0.4	-4.5	+4.7	+31	+56	+80	+78	+13
44%	32%	51%	65%	66%	69%	71%	64%	47%

SS	DC	CW	EMA	Rib Fat	Rump	RBY %	IMF %
+1.4	-4.0	+26	+2.3	+2.2	+2.3	+0.4	+0.6
71%	38%	58%	53%	57%	56%	52%	51%

**Comments:** A great type of bull to start the sale with this thick son of N119. A strong pedigree with Braveheart, Reality and Crump all featuring on the maternal side. S521 is a square, deep-bodied type, clean and smooth through the front end with a deep flank and meaty hindquarter. He displays the easy doing attributes we look for in hill-country, with good fats and moderate frame. A very good sound type.

Purchaser:

Price: \$

## Lot: 2 MEADOWSLEA S392 <sup>PV</sup>

Birth Date: 30/09/21 ID No: 19134021392

TURIHAUA CRUMP E5 (ET) <sup>SV</sup>

MEADOWSLEA N166 <sup>SV</sup>

MEADOWSLEA G922 <sup>SV</sup>

MEADOWSLEA L141

MEADOWSLEA N294

MEADOWSLEA L248



INDEXES	
SR	HD
+\$112	+\$78

### SEPTEMBER 2023 TRANSTASMAN ANGUS CATTLE EVALUATION

CED	DTRS	GL	BW	200	400	600	MCW	Milk
-3.2	+0.2	-4.6	+6.1	+40	+72	+92	+89	+15
50%	39%	54%	75%	71%	72%	75%	69%	53%

SS	DC	CW	EMA	Rib Fat	Rump	RBY %	IMF %
+2.2	-5.2	+39	+2.6	+2.8	+1.8	+0.3	+0.5
74%	42%	60%	56%	60%	59%	55%	55%

**Comments:** A powerful, thick set son of N166, showing the terrific hindquarter he leaves. Again, goes back to Reality on the dam side, and is double bred to the great old Turihaua Crumble. Great length, width, and depth with strong growth figures, and as we would expect with this cross, very good fertility traits with a days to calving figure in the top 15%. An easy fleshing bull with a deep flank and moderate frame.

Purchaser:

Price: \$

# 2 YEAR OLD ANGUS BULLS

## Lot: 3 MEADOWSLEA S338 <sup>PV</sup>

Birth Date: 26/09/21 ID No: 19134021338

TURIHAUA RHINO L159

TURIHAUA RHINESTONE P186 <sup>PV</sup>

TURIHAUA K175

KAYJAY FREEDOM I36

MEADOWSLEA M518

MEADOWSLEA J447



### INDEXES

SR	HD
+\$87	+\$74

### SEPTEMBER 2023 TRANSTASMAN ANGUS CATTLE EVALUATION

CED	DTRS	GL	BW	200	400	600	MCW	Milk
-2.7	+0.2	-4.3	+5.3	+29	+57	+79	+92	+8
48%	34%	44%	74%	70%	71%	74%	68%	48%

SS	DC	CW	EMA	Rib Fat	Rump	RBY %	IMF %
+1.6	-4.3	+22	+0.5	+0.8	+0.5	+1.0	-0.7
73%	36%	60%	55%	59%	58%	54%	53%

**Comments:** A nice stylish Rhinestone son going back to Braveheart through the dam line. These Rhinestone sons are very sound on the ground with a great outlook to them. S338 is a smooth, well-balanced bull, very correct with a lovely clean shoulder and very good top to him. Nice all-round type and a bull worthy of close inspection.

Purchaser:

Price: \$

## Lot: 4 MEADOWSLEA S222 <sup>PV</sup>

Birth Date: 15/09/21 ID No: 19134021222

WOODBANK 0113

WOODBANK 7017 <sup>SV</sup>

WOODBANK 9132

MEADOWSLEA F540

MEADOWSLEA L199

MEADOWSLEA C1047



### INDEXES

SR	HD
+\$129	+\$108

### SEPTEMBER 2023 TRANSTASMAN ANGUS CATTLE EVALUATION

CED	DTRS	GL	BW	200	400	600	MCW	Milk
+3.6	+0.3	-5.8	+3.6	+34	+70	+91	+71	+16
51%	38%	57%	75%	70%	71%	74%	68%	51%

SS	DC	CW	EMA	Rib Fat	Rump	RBY %	IMF %
+2.3	-5.0	+40	+3.3	+2.8	+3.8	+0.1	+1.1
74%	39%	60%	54%	58%	58%	53%	53%

**Comments:** A son of the \$32,000 Woodbank bull who goes back to Braveheart. Out of a top performing F540 cow who has previously bred a stud bull, so we expect performance from this cross. S222 certainly has good data and offers heifer and cow mating options as well with calving ease, short gestation and low birth weight followed by strong growth. He has good fertility, with those important strong fats, and has plenty of IMF as well. This chap displays lot of depth and thickness through the hindquarter with a strong coat, good head and bone, and an efficient moderate frame generating a good SRI Index.

Purchaser:

Price: \$

# 2 YEAR OLD ANGUS BULLS

## Lot: 5 MEADOWSLEA S151 <sup>PV</sup>

Birth Date: 07/09/21 ID No: 19134021151

MEADOWSLEA L226 <sup>SV</sup>

MEADOWSLEA P700 <sup>SV</sup>

MEADOWSLEA H117

MEADOWSLEA N141

MEADOWSLEA Q206 <sup>PV</sup>

MEADOWSLEA H126 <sup>SV</sup>



INDEXES	
SR	HD
+\$131	+\$99

### SEPTEMBER 2023 TRANSTASMAN ANGUS CATTLE EVALUATION

CED	DTRS	GL	BW	200	400	600	MCW	Milk
+2.1	-2.6	-4.1	+4.3	+36	+67	+85	+71	+15
49%	34%	44%	74%	69%	70%	72%	66%	45%

SS	DC	CW	EMA	Rib Fat	Rump	RBY %	IMF %
+3.4	-5.6	+33	+4.2	+1.9	+1.7	+0.5	+0.6
72%	37%	58%	54%	57%	57%	52%	52%

**Comments:** A son of the high-performing P700 whose sons were such a feature in June. An impressive data set makes him a great heifer mating option. He has a strong pedigree with his grandam H126 the dam of stud retained sire K703. S151 has calving ease with clean shoulders and the efficient moderate cow size we are aiming for. He has exceptional fertility traits with scrotal size and days to calving ranking near the top of the breed, as well as strong muscle and good fats, all combining to give a good SRI index. An easy-fleshing bull with plenty of length about him and a strong hindquarter.

Purchaser:

Price: \$

## Lot: 6 MEADOWSLEA S516 <sup>PV</sup>

Birth Date: 19/10/21 ID No: 19134021516

TAIMATE LAZARUS L12 <sup>PV</sup>

MEADOWSLEA P565 <sup>SV</sup>

MEADOWSLEA G943

MEADOWSLEA H119

MEADOWSLEA K791

MEADOWSLEA G843



INDEXES	
SR	HD
+\$107	+\$94

### SEPTEMBER 2023 TRANSTASMAN ANGUS CATTLE EVALUATION

CED	DTRS	GL	BW	200	400	600	MCW	Milk
+0.3	+0.9	-4.1	+5.1	+36	+68	+92	+78	+12
51%	39%	53%	74%	69%	70%	68%	64%	52%

SS	DC	CW	EMA	Rib Fat	Rump	RBY %	IMF %
+3.7	-4.1	+37	+3.7	+0.7	+0.3	+0.5	+1.1
73%	38%	58%	55%	58%	58%	54%	54%

**Comments:** This Lazarus grandson is an upstanding, well balanced young sire we selected to use as a yearling alongside his sire. Great head and outlook, clean shoulders, deep body, strong hindquarter and lovely temperament. Good fertility traits with strong scrotal size in the top 5% while EMA is strong too. Grand dam bred L153 who was used in the stud and bred well. Used late in the season to follow up AI in the adult cows.

Purchaser:

Price: \$



# 2 YEAR OLD ANGUS BULLS

## Lot: 7 MEADOWSLEA S238 <sup>PV</sup>

Birth Date: 17/09/21 ID No: 19134021238

RANGATIRA 13-38

MEADOWSLEA M429

MEADOWSLEA G922 <sup>SV</sup>

TURIHAUA CRUMP E5 (ET) <sup>SV</sup>

MEADOWSLEA M531

MEADOWSLEA D135



INDEXES	
SR	HD
+\$107	+\$90

### SEPTEMBER 2023 TRANSTASMAN ANGUS CATTLE EVALUATION

CED	DTRS	GL	BW	200	400	600	MCW	Milk
-0.7	+2.0	-5.2	+6.2	+39	+71	+93	+86	+12
53%	41%	60%	75%	72%	72%	75%	70%	56%

SS	DC	CW	EMA	Rib Fat	Rump	RBY %	IMF %
+1.1	-3.9	+40	+1.7	+1.6	+1.3	+0.8	-0.4
74%	43%	62%	57%	60%	60%	56%	56%

**Comments:** Well-bred bull here sired by M429, who was sold to Red Oak for \$18,000 and went back to the \$100,000 Rangatira 13-38. Out of a Crump cow. Good strong growth, clean through the shoulders, upstanding and well-balanced type of bull. He has recorded strong growth with good easy doing fats. Very sound, strong hill-country bull.

Purchaser:

Price: \$

## Lot: 8 MEADOWSLEA S273 <sup>PV</sup>

Birth Date: 21/09/21 ID No: 19134021273

MEADOWSLEA MEAT MACHINE G914 <sup>SV</sup>

MEADOWSLEA K703 <sup>SV</sup>

MEADOWSLEA H126 <sup>SV</sup>

MATAURI REALITY 839

MEADOWSLEA K767

MEADOWSLEA 147



INDEXES	
SR	HD
+\$114	+\$108

### SEPTEMBER 2023 TRANSTASMAN ANGUS CATTLE EVALUATION

CED	DTRS	GL	BW	200	400	600	MCW	Milk
+5.4	+4.2	-1.9	+2.6	+31	+54	+65	+36	+17
58%	48%	69%	75%	73%	72%	72%	70%	65%

SS	DC	CW	EMA	Rib Fat	Rump	RBY %	IMF %
+1.0	-3.5	+27	+4.8	+3.1	+2.2	+0.8	+1.0
75%	49%	63%	62%	64%	64%	59%	65%

**Comments:** A top bull to start the next pen, specially selected for heifer mating. Wonderful clean shoulders, terrific calving ease and low birthweight with a pedigree to back it up featuring both K703 and Reality. EMA is strong, fats are in the top 10% of the breed and he scanned with the biggest actual IMF in the catalogue. Good solid square type with beautiful easy fleshing.

Purchaser:

Price: \$

# 14 DAYS FREE COVER. NO BULL.



We want to ensure you get the very best cover on sale day and the best service every day after that. That's why we offer to insure your bull purchased at any **FMG Premier Bull Sale** for 14 days free\* from the fall of the hammer.

**Extend your cover.** All bulls purchased at auction up to \$50,000 can be insured for 6.5% of the purchase price on a 12-month policy. You can choose to extend your 14 days free cover on the Purchaser Instruction and Insurance Slip. For terms less than 12 months, different rates apply.

So talk to your FMG Rural Manager about FMG Premier Bull Sales Insurance.

---

**We're here for the good of the country.**

\* Subject to standard underwriting criteria. Please note this is only a summary of FMG products and services and is subject to our specific product documentation. For full details, refer to the relevant policy wording at [fmg.co.nz/livestockpolicy](http://fmg.co.nz/livestockpolicy)

**FMG**  
Advice & Insurance

# 2 YEAR OLD ANGUS BULLS

## Lot: 9 MEADOWSLEA S240 <sup>PV</sup>

Birth Date: 17/09/21 ID No: 19134021240

MEADOWSLEA M429

MEADOWSLEA P581 <sup>SV</sup>

MEADOWSLEA M1045

TURIHAUA CRUMP E5 (ET) <sup>SV</sup>

MEADOWSLEA M469

MEADOWSLEA F556



### INDEXES

SR	HD
+\$153	+\$101

### SEPTEMBER 2023 TRANSTASMAN ANGUS CATTLE EVALUATION

CED	DTRS	GL	BW	200	400	600	MCW	Milk
+5.2	+4.9	-4.0	+1.2	+27	+50	+58	+37	+12
51%	40%	64%	72%	69%	69%	72%	66%	57%

SS	DC	CW	EMA	Rib Fat	Rump	RBY %	IMF %
+1.5	-6.1	+18	+1.1	+4.3	+5.1	+0.1	+0.7
72%	39%	58%	57%	59%	59%	54%	60%

**Comments:** Another wonderful heifer mating option with an exceptional super low birth weight and good calving ease again. Days to calving and fats are in the top 5% of the breed and he had the second-best actual IMF. This all combines to give a self-replacing index in the top 5% too! Deep, thick, and square with that great coat coming down from Crump in the background. Good sound, moderate-framed type.

Purchaser:

Price: \$

## Lot: 10 MEADOWSLEA S241 <sup>PV</sup>

Birth Date: 17/09/21 ID No: 19134021241

TAIMATE LAZARUS L12 <sup>PV</sup>

MEADOWSLEA P565 <sup>SV</sup>

MEADOWSLEA G943

GOLDWYN 017 <sup>SV</sup>

MEADOWSLEA J533

MEADOWSLEA F612



### INDEXES

SR	HD
+\$96	+\$80

### SEPTEMBER 2023 TRANSTASMAN ANGUS CATTLE EVALUATION

CED	DTRS	GL	BW	200	400	600	MCW	Milk
-2.9	-1.9	-6.4	+6.5	+41	+73	+103	+95	+19
56%	45%	68%	76%	73%	72%	75%	69%	62%

SS	DC	CW	EMA	Rib Fat	Rump	RBY %	IMF %
+3.2	-6.1	+48	-1.1	+1.4	+1.4	-0.1	-0.1
75%	41%	61%	60%	62%	62%	57%	63%

**Comments:** Strong, powerful cow mating option here with real head, bone, and substance. Plenty of growth with nice pullup and style. Out of a cow by old Goldwyn who produced stud sire R700, who has several yearling sons in this sale. Grand dam bred a stud bull sold to Merchiston Angus at \$20,000. Heaviest in this group at weaning, second heaviest at 400 days and heaviest again at 600 days. Scrotal size in the top 10% and days to calving in the top 5% so exceptional fertility here and has some IMF to boot. Will develop into a very good herd sire.

Purchaser:

Price: \$

# 2 YEAR OLD ANGUS BULLS

## Lot: 11 MEADOWSLEA S395 <sup>PV</sup>

Birth Date: 30/09/21 ID No: 19134021395

TURIHAUA RHINO L159

TURIHAUA RHINESTONE P186 <sup>PV</sup>

TURIHAUA K175

MEADOWSLEA MEAT MACHINE G914 <sup>S</sup>

MEADOWSLEA P744 <sup>SV</sup>

MEADOWSLEA L139



### INDEXES

SR	HD
+\$106	+\$92

### SEPTEMBER 2023 TRANSTASMAN ANGUS CATTLE EVALUATION

CED	DTRS	GL	BW	200	400	600	MCW	Milk
+2.1	+2.1	-4.3	+4.2	+29	+58	+74	+64	+11
49%	35%	45%	75%	70%	72%	74%	68%	48%

SS	DC	CW	EMA	Rib Fat	Rump	RBV %	IMF %
+1.3	-4.1	+27	+1.3	+2.5	+2.9	+0.3	+0.0
73%	39%	60%	56%	59%	59%	54%	54%

**Comments:** First of a brace of very good Turihaua Rhinestone sons kept back for this sale. Goes back to the Meat Machine which seems to be a very good cross and shows that exceptional width across the loin. Moderate birthweight with good calving ease, impressive fats and a moderate mature cow size. Deep, thick, and square, suitable for both heifers and cows.

Purchaser:

Price: \$

## Lot: 12 MEADOWSLEA S357 <sup>PV</sup>

Birth Date: 28/09/21 ID No: 19134021357

TURIHAUA RHINO L159

TURIHAUA RHINESTONE P186 <sup>PV</sup>

TURIHAUA K175

MEADOWSLEA K811

MEADOWSLEA P816 <sup>SV</sup>

MEADOWSLEA L085



### INDEXES

SR	HD
+\$101	+\$79

### SEPTEMBER 2023 TRANSTASMAN ANGUS CATTLE EVALUATION

CED	DTRS	GL	BW	200	400	600	MCW	Milk
-3.4	-2.7	-4.0	+6.1	+38	+71	+94	+93	+10
48%	34%	44%	74%	69%	70%	68%	64%	46%

SS	DC	CW	EMA	Rib Fat	Rump	RBV %	IMF %
+2.7	-4.1	+33	+3.9	-0.1	-0.7	+0.8	+0.8
73%	36%	57%	55%	58%	57%	53%	53%

**Comments:** Another very sound Rhinestone son with plenty of growth - third heaviest at weaning. Easy fleshing with very strong hindquarter. Some muscle on him too with the second-best actual IMF. Square type with great presence about him.

Purchaser:

Price: \$

# 2 YEAR OLD ANGUS BULLS

## Lot: 13 MEADOWSLEA S155 <sup>PV</sup>

Birth Date: 08/09/21 ID No: 19134021155

MEADOWSLEA L226 <sup>SV</sup>

MEADOWSLEA P700 <sup>SV</sup>

MEADOWSLEA H117

MEADOWSLEA M495

MEADOWSLEA P584 <sup>SV</sup>

MEADOWSLEA M499



INDEXES	
SR	HD
+\$146	+\$111

### SEPTEMBER 2023 TRANSTASMAN ANGUS CATTLE EVALUATION

CED	DTRS	GL	BW	200	400	600	MCW	Milk
+6.0	-0.6	-5.0	+2.9	+32	+65	+80	+54	+18
48%	32%	43%	74%	70%	71%	74%	67%	45%

SS	DC	CW	EMA	Rib Fat	Rump	RBY %	IMF %
+2.7	-6.6	+35	+1.5	+4.0	+5.0	-0.4	+0.7
72%	36%	58%	54%	58%	57%	52%	52%

**Comments:** A son of P700 who featured so strongly in the winter. Terrific figures for heifer mating with plenty of calving ease and a low birthweight EBV. Fats, mature cow weight and days to calving are in the top 5% of the breed which ensures an outstanding self-replacing index. Very easy fleshing with a wonderful backend and moderate, square body type.

Purchaser:

Price: \$

## Lot: 14 MEADOWSLEA S577

Birth Date: 14/08/21 ID No: 19134021577

MEADOWSLEA K703 <sup>SV</sup>

MEADOWSLEA Q479 <sup>PV</sup>

MEADOWSLEA M451

TURIHAUA LOYALTY L44 (ET)

MEADOWSLEA Q392 <sup>PV</sup>

MEADOWSLEA K735



INDEXES	
SR	HD
+\$142	+\$84

### SEPTEMBER 2023 TRANSTASMAN ANGUS CATTLE EVALUATION

CED	DTRS	GL	BW	200	400	600	MCW	Milk
+0.9	+2.6	-3.4	+2.3	+25	+50	+60	+28	+16
41%	31%	41%	59%	64%	66%	62%	58%	44%

SS	DC	CW	EMA	Rib Fat	Rump	RBY %	IMF %
+3.6	-5.7	+18	+4.1	+3.7	+4.5	+0.5	+0.0
70%	34%	53%	50%	54%	53%	49%	48%

**Comments:** A low birthweight bull ideal for mating heifers. Sire Q479 was sold at lot 1 in our 2021 spring sale to Edward Harrington. Fertility is again outstanding with days to calving in the top 10%, fats and scrotal size in the top 5%, and a terrific self-replacing index. Moderate, deep bodied, square type and very sound.

Purchaser:

Price: \$

# 2 YEAR OLD ANGUS BULLS

## Lot: 15 MEADOWSLEA S480 <sup>PV</sup>

Birth Date: 10/10/21 ID No: 19134021480

TAIMATE LAZARUS L12 <sup>PV</sup>

MEADOWSLEA P565 <sup>SV</sup>

MEADOWSLEA G943

MEADOWSLEA L106

MEADOWSLEA P695 <sup>SV</sup>

MEADOWSLEA K944



INDEXES	
SR	HD
+\$113	+\$91

### SEPTEMBER 2023 TRANSTASMAN ANGUS CATTLE EVALUATION

CED	DTRS	GL	BW	200	400	600	MCW	Milk
+0.1	+1.9	-4.3	+4.8	+35	+68	+91	+82	+13
49%	36%	51%	73%	68%	65%	65%	62%	49%
SS	DC	CW	EMA	Rib Fat	Rump	RBY %	IMF %	
+2.5	-5.2	+38	+1.3	+1.3	+0.9	+0.1	+1.6	
54%	35%	55%	50%	53%	52%	48%	50%	

**Comments:** A thick, deep bodied son of P565. Moderate birthweight with plenty of growth. Grand-dam K944 is one of our great old cows who will feature in the 2024 female sale, and was the mother of Q347 sold for \$32,000 to Glen R Angus. Scrotal, days to calving, and IMF EBVs are all strong.

Purchaser:

Price: \$

## Lot: 16 MEADOWSLEA S313 <sup>PV</sup>

Birth Date: 24/09/21 ID No: 19134021313

TAIMATE LAZARUS L12 <sup>PV</sup>

MEADOWSLEA P565 <sup>SV</sup>

MEADOWSLEA G943

TURIHAUA CRUMP E5 (ET) <sup>SV</sup>

MEADOWSLEA L062

MEADOWSLEA F562



INDEXES	
SR	HD
+\$92	+\$103

### SEPTEMBER 2023 TRANSTASMAN ANGUS CATTLE EVALUATION

CED	DTRS	GL	BW	200	400	600	MCW	Milk
+2.5	+3.5	-6.2	+3.7	+31	+60	+94	+83	+14
55%	44%	69%	75%	72%	71%	73%	69%	60%
SS	DC	CW	EMA	Rib Fat	Rump	RBY %	IMF %	
+1.9	-5.0	+42	+0.5	-0.1	-1.1	+0.7	+1.4	
73%	42%	61%	60%	62%	62%	57%	63%	

**Comments:** Another P565, this time out of a direct Crump daughter. Plenty of calving ease, low birthweight, fertility, and short gestation with another deep thick body. Plenty of bone and substance about him, suitable for cows or heifers.

Purchaser:

Price: \$

MEADOWSLEA  
ANGUS & SHEEP GENETICS

# 2 YEAR OLD ANGUS BULLS

## Lot: 17 MEADOWSLEA S334 <sup>PV</sup>

Birth Date: 26/09/21 ID No: 19134021334

MEADOWSLEA F540

MEADOWSLEA L256

MEADOWSLEA H246

GOLDWYN 017 <sup>SV</sup>

MEADOWSLEA L323

MEADOWSLEA G860



INDEXES	
SR	HD
+\$97	+\$96

### SEPTEMBER 2023 TRANSTASMAN ANGUS CATTLE EVALUATION

CED	DTRS	GL	BW	200	400	600	MCW	Milk
+6.2	+6.1	-7.8	+0.7	+18	+44	+62	+65	+16
54%	43%	65%	74%	72%	71%	72%	69%	61%
SS	DC	CW	EMA	Rib Fat	Rump	RBY %	IMF %	
+1.1	-7.0	+14	-8.2	+5.6	+6.7	-1.7	+2.0	
73%	43%	61%	60%	62%	62%	56%	63%	

**Comments:** Incredible heifer mating option here. Terrific calving ease with short gestation and low birthweight both in the top 5% of the breed! Has lovely clean shoulder and exceptional easy doing attributes. Both days to calving and rib fat are in the top 1% of the breed! Good type of bull.

Purchaser:

Price: \$

## Lot: 18 MEADOWSLEA S328 <sup>PV</sup>

Birth Date: 26/09/21 ID No: 19134021328

MEADOWSLEA F540

MEADOWSLEA L256

MEADOWSLEA H246

MEADOWSLEA M495

MEADOWSLEA P588 <sup>SV</sup>

MEADOWSLEA M582 <sup>SV</sup>



INDEXES	
SR	HD
+\$78	+\$79

### SEPTEMBER 2023 TRANSTASMAN ANGUS CATTLE EVALUATION

CED	DTRS	GL	BW	200	400	600	MCW	Milk
-3.5	-5.7	-5.9	+6.3	+41	+87	+109	+126	+13
51%	40%	63%	74%	71%	71%	74%	68%	57%
SS	DC	CW	EMA	Rib Fat	Rump	RBY %	IMF %	
+1.1	-3.6	+50	-4.2	+0.8	+1.5	-0.1	-0.4	
73%	39%	60%	58%	61%	61%	55%	61%	

**Comments:** A very similar type to the last, by the same sire, and showing the same depth and exceptional hindquarter with real easy doing ability. Short gestation, growth, rump fat EBVs are all right up there. Thick, moderate, hill country type.

Purchaser:

Price: \$

# 2 YEAR OLD ANGUS BULLS

## Lot: 19 MEADOWSLEA S462 <sup>PV</sup>

Birth Date: 06/10/21 ID No: 19134021462

TURIROA RAMBLE 11541 (ET)

TURIROA 14830 (ET) <sup>SV</sup>

TURIROA TULIP 459

MEADOWSLEA K703 <sup>SV</sup>

MEADOWSLEA P691 <sup>SV</sup>

MEADOWSLEA L238



INDEXES	
SR	HD
+\$133	+\$67

### SEPTEMBER 2023 TRANSTASMAN ANGUS CATTLE EVALUATION

CED	DTRS	GL	BW	200	400	600	MCW	Milk
-3.8	-0.5	-2.7	+3.8	+32	+59	+69	+51	+15
52%	38%	51%	75%	71%	72%	75%	70%	54%

SS	DC	CW	EMA	Rib Fat	Rump	RBY %	IMF %
+2.2	-5.6	+24	+3.9	+4.0	+4.9	+0.1	+0.6
74%	42%	62%	57%	60%	60%	56%	56%

**Comments:** Another useful heifer mating bull with lovely clean shoulders, plenty of depth of body, and easy doing attributes. Good low birthweight with days to calving in the top 10% of the breed, while rib and rump fat are in the top 5% giving a great SRI. This Turiroa 14830 X K703 cross has always been pretty good.

Purchaser:

Price: \$

## Lot: 20 MEADOWSLEA S333 <sup>PV</sup>

Birth Date: 26/09/21 ID No: 19134021333

MEADOWSLEA MEAT MACHINE G914 <sup>SV</sup>

MEADOWSLEA K703 <sup>SV</sup>

MEADOWSLEA H126 <sup>SV</sup>

MEADOWSLEA F540

MEADOWSLEA L463 <sup>SV</sup>

MEADOWSLEA A476



INDEXES	
SR	HD
+\$118	+\$102

### SEPTEMBER 2023 TRANSTASMAN ANGUS CATTLE EVALUATION

CED	DTRS	GL	BW	200	400	600	MCW	Milk
+6.0	+3.0	-3.5	+1.3	+23	+49	+55	+33	+19
54%	40%	54%	75%	72%	73%	75%	70%	58%

SS	DC	CW	EMA	Rib Fat	Rump	RBY %	IMF %
+1.5	-4.8	+18	+3.4	+5.6	+6.0	-0.3	+1.4
75%	47%	63%	59%	62%	61%	57%	58%

**Comments:** Nice bull to lead this pen of super-low-birthweight bulls. Terrific calving ease with exceptional low birth weight, from a great cross of K703 and F540. Wonderful easy doing attributes and thick square body shape coming through from both sides of that pedigree. He has strong days to calving, his rib and rump fat EBVs are in the top 1% of the breed and he had very useful actual IMF as well.

Purchaser:

Price: \$



# 2 YEAR OLD ANGUS BULLS

## Lot: 21 MEADOWSLEA S226 <sup>PV</sup>

Birth Date: 16/09/21 ID No: 19134021226

MEADOWSLEA K703 <sup>SV</sup>

MEADOWSLEA N157 <sup>SV</sup>

MEADOWSLEA L086

GLANWORTH WAIGROUP 0816 <sup>SV</sup>

MEADOWSLEA J543

MEADOWSLEA A412



### INDEXES

SR	HD
+\$97	+\$103

### SEPTEMBER 2023 TRANSTASMAN ANGUS CATTLE EVALUATION

CED	DTRS	GL	BW	200	400	600	MCW	Milk
+5.1	+2.2	-4.4	+1.7	+21	+49	+68	+47	+17
49%	35%	44%	75%	70%	71%	73%	68%	52%

SS	DC	CW	EMA	Rib Fat	Rump	RBY %	IMF %
+2.0	-4.1	+25	+2.3	+3.2	+3.3	+0.6	+0.0
73%	42%	60%	55%	59%	58%	54%	53%

**Comments:** Another super low birthweight bull with terrific calving ease and thick square body type. The same easy-doing fats with rib fat in the top 10% of the Angus breed, and a nice efficient mature cow weight. Another ideal hill country bull who would be ideal for heifers too.

Purchaser:

Price: \$

## Lot: 22 MEADOWSLEA S545 <sup>PV</sup>

Birth Date: 29/10/21 ID No: 19134021545

MEADOWSLEA N228

MEADOWSLEA Q104 <sup>PV</sup>

MEADOWSLEA N352

STERN 0713

MEADOWSLEA G885

MEADOWSLEA A411



### INDEXES

SR	HD
+\$114	+\$97

### SEPTEMBER 2023 TRANSTASMAN ANGUS CATTLE EVALUATION

CED	DTRS	GL	BW	200	400	600	MCW	Milk
+5.0	-0.4	-3.7	+1.9	+23	+47	+55	+45	+16
47%	33%	39%	73%	65%	67%	69%	64%	48%

SS	DC	CW	EMA	Rib Fat	Rump	RBY %	IMF %
+1.1	-5.3	+17	+1.6	+3.8	+4.7	-0.1	+1.3
67%	36%	56%	49%	54%	53%	48%	48%

**Comments:** Another low birthweight, easy-calving bull here with very clean shoulders and good sound, well-balanced type. Out of a good old cow who lasted the 10 years and bred top sons including lot 25 in the 2022 sale. Exceptional low birthweight in the top 10% of the breed, with fats and mature cow weight in the top 5%!

Purchaser:

Price: \$

# 2 YEAR OLD ANGUS BULLS

**Lot: 23 MEADOWSLEA S427 <sup>PV</sup>**

**Birth Date:** 02/10/21 **ID No:** 19134021427

TURIHAUA RHINO L159

**TURIHAUA RHINestone P186 <sup>PV</sup>**

TURIHAUA K175

MATAURI REALITY 839

**MEADOWSLEA J417 <sup>SV</sup>**

MEADOWSLEA C851



INDEXES	
SR	HD
+\$73	+\$110

## SEPTEMBER 2023 TRANSTASMAN ANGUS CATTLE EVALUATION

CED	DTRS	GL	BW	200	400	600	MCW	Milk
+2.4	+4.0	-5.0	+5.7	+43	+78	+112	+121	+10
51%	40%	54%	75%	71%	72%	74%	68%	52%
SS	DC	CW	EMA	Rib Fat	Rump	RBY %	IMF %	
+2.1	-2.5	+45	+1.9	+0.7	+0.3	+0.4	+0.6	
73%	41%	61%	56%	59%	59%	55%	55%	

**Comments:** Terrific scope and scale about this Rhinestone x Reality cross. Mother was sold for stud to Alan Fielding in this year's female sale. Exceptional growth, lovely topline, great volume and capacity. Calving ease figures are strong and he was the second heaviest at 600 days. Very sound footed bull with lovely clean shoulders and nice outlook.

**Purchaser:**

**Price: \$**

**Lot: 24 MEADOWSLEA S300 <sup>PV</sup>**

**Birth Date:** 23/09/21 **ID No:** 19134021300

TURIROA RAMBLE 11541 (ET)

**TURIROA 14830 (ET) <sup>SV</sup>**

TURIROA TULIP 459

MEADOWSLEA H109

**MEADOWSLEA K735**

MEADOWSLEA H257



INDEXES	
SR	HD
+\$112	+\$64

## SEPTEMBER 2023 TRANSTASMAN ANGUS CATTLE EVALUATION

CED	DTRS	GL	BW	200	400	600	MCW	Milk
-5.0	+0.2	-3.4	+4.8	+35	+61	+71	+57	+13
52%	38%	49%	76%	72%	73%	76%	70%	56%
SS	DC	CW	EMA	Rib Fat	Rump	RBY %	IMF %	
+2.9	-4.0	+29	+4.7	+1.0	+1.6	+0.8	+0.0	
74%	42%	62%	57%	60%	60%	56%	55%	

**Comments:** Similar scope and scale about this chap with the same wonderful clean shoulder, great outlook, length, scope, and scale. Dam bred a yearling sold to Waimara Angus and a good bull that went to Giles Foley. EMA and scrotal EBVs are strong. Another very sound bull.

**Purchaser:**

**Price: \$**



# BETTER BALANCED BEEF

## **Bred for Balance**

Strong maternal influence combined with quality carcase attributes. Independent structural evaluation & superior genetic traits.

## **Farmed for Balance**

From hill country farming through to intensive grazing systems.

## **Recorded for Balance**

TACE Performance  
Recorded EBV's specific to NZ farming conditions & market assured selection indexes.

## **Consumed for Balance**

Superior carcase grading for higher market premiums.

**ANGUS NEW ZEALAND**  
IT TAKES GREAT  
BALANCE TO DELIVER  
GREAT RESULTS

# 2 YEAR OLD ANGUS BULLS

**Lot: 25 MEADOWSLEA S498 <sup>PV</sup>**

**Birth Date:** 12/10/21 **ID No:** 19134021498

MEADOWSLEA K811

**MEADOWSLEA Q524 <sup>PV</sup>**

MEADOWSLEA K708

MEADOWSLEA L219

**MEADOWSLEA P538 <sup>SV</sup>**

MEADOWSLEA F574



INDEXES	
SR	HD
+\$53	+\$77

## SEPTEMBER 2023 TRANSTASMAN ANGUS CATTLE EVALUATION

CED	DTRS	GL	BW	200	400	600	MCW	Milk
-3.5	-8.7	-5.2	+6.5	+41	+75	+111	+94	+19
50%	39%	68%	73%	70%	71%	74%	67%	57%

SS	DC	CW	EMA	Rib Fat	Rump	RBV %	IMF %
+1.0	-3.5	+48	-2.8	+4.2	+4.4	-1.2	+1.1
73%	38%	59%	57%	60%	60%	54%	61%

**Comments:** Another bull with scope and capacity about him. Deep body, strong across the top, plenty of growth, great head foot and bone. Grand dam F574 was a great old cow sold to Okaka Angus as a 10-year-old. EBVs show short gestation, impressive growth, and a rib fat EBV in the top 5% of the breed. Will make a great herd sire as an adult bull.

**Purchaser:**

**Price: \$**

**Lot: 26 MEADOWSLEA S461 <sup>PV</sup>**

**Birth Date:** 06/10/21 **ID No:** 19134021461

MEADOWSLEA K811

**MEADOWSLEA Q524 <sup>PV</sup>**

MEADOWSLEA K708

MEADOWSLEA F737

**MEADOWSLEA H108**

MEADOWSLEA F530



INDEXES	
SR	HD
+\$90	+\$90

## SEPTEMBER 2023 TRANSTASMAN ANGUS CATTLE EVALUATION

CED	DTRS	GL	BW	200	400	600	MCW	Milk
+1.4	-4.8	-3.5	+4.4	+37	+64	+84	+66	+21
52%	40%	64%	74%	71%	71%	73%	68%	60%

SS	DC	CW	EMA	Rib Fat	Rump	RBV %	IMF %
+1.5	-5.1	+40	-2.3	+5.5	+6.1	-1.8	+3.6
73%	39%	59%	58%	61%	61%	55%	61%

**Comments:** Plenty of scope and scale about this next Q524 son. Great topline, strong growth, exceptional fats and IMF in the top 5% for the breed. Days to calving and milk figures are also very strong reflecting exceptional maternal performance. A good sound footed bull with calving ease and moderate birthweight suitable for heifers. Mother also bred a yearling in this sale at lot 98, and the grandmother F530 was sold to Helmsdale Angus herself, then had a son P556 sold there for stud duties as well.

**Purchaser:**

**Price: \$**

# 2 YEAR OLD ANGUS BULLS

## Lot: 27 MEADOWSLEA S217 <sup>PV</sup>

Birth Date: 15/09/21 ID No: 19134021217

TURIHAUA CRUMP E5 (ET) <sup>SV</sup>

MEADOWSLEA N166 <sup>SV</sup>

MEADOWSLEA G922 <sup>SV</sup>

MEADOWSLEA M1016

MEADOWSLEA P762 <sup>SV</sup>

MEADOWSLEA M405



INDEXES	
SR	HD
+\$121	+\$99

### SEPTEMBER 2023 TRANSTASMAN ANGUS CATTLE EVALUATION

CED	DTRS	GL	BW	200	400	600	MCW	Milk
+2.9	+4.8	-5.3	+2.4	+30	+61	+79	+66	+19
49%	37%	55%	75%	69%	71%	73%	67%	50%

SS	DC	CW	EMA	Rib Fat	Rump	RBV %	IMF %
+0.7	-5.7	+32	+3.3	+3.7	+3.2	+0.6	-0.3
73%	41%	60%	56%	59%	59%	54%	55%

**Comments:** A nice heifer option here. This N166 son has calving ease, short gestation and low birthweight, followed by good growth, fats, and muscle. His actual weaning weight was second best in this catalogue, and he had the biggest actual EMA. Days to calving is in the top 10% and rib fat in the top 5% with an impressive index. Exhibits that great back end and wide body we see in all N166 progeny. Dam bred a very well-balanced bull R783 who was used as a yearling and then sold at lot 12 in June 2022.

Purchaser:

Price: \$

## Lot: 28 MEADOWSLEA S200 <sup>PV</sup>

Birth Date: 14/09/21 ID No: 19134021200

GOLDWYN H817 <sup>SV</sup>

TURIROA PANTHER 18P241 (ET) <sup>PV</sup>

TURIROA L120 (ET)

TURIHAUA CRUMP E5 (ET) <sup>SV</sup>

MEADOWSLEA J629

MEADOWSLEA A307



INDEXES	
SR	HD
+\$138	+\$80

### SEPTEMBER 2023 TRANSTASMAN ANGUS CATTLE EVALUATION

CED	DTRS	GL	BW	200	400	600	MCW	Milk
+0.3	+3.1	-5.4	+3.9	+30	+61	+66	+60	+16
55%	43%	69%	76%	73%	73%	76%	70%	62%

SS	DC	CW	EMA	Rib Fat	Rump	RBV %	IMF %
+0.5	-6.5	+22	-1.7	+5.4	+6.1	-0.4	-0.2
75%	43%	62%	61%	64%	64%	58%	65%

**Comments:** A nice heifer option here in the Crump x Panther cross. Out of a good cow who was sold as a 10-year-old in the sale this year to Glen Islay. Good calving ease, moderate birthweight, strong fertility and exceptional fats, which when combined give him a powerful index. He was the heaviest in the mob at 400 days. His days to calving figure and rump fat figures are in the top 5% while his rib fat is in the top 1%! Good topline to this easy fleshing, meaty bull.

Purchaser:

Price: \$



Proven performance.



Error free, convenient  
DNA sampling with Allflex TSU  
(tissue sampling unit).

**Allflex**®

Livestock Intelligence

Duncan Steans 027446 5508 (Upper North)  
Mark McManaway 027 517 6693 (Lower North)  
Steve Kelly 027 560 2699 (South Island)

[www.allflex.co.nz](http://www.allflex.co.nz)

# 2 YEAR OLD ANGUS BULLS

## Lot: 29 MEADOWSLEA S246 <sup>PV</sup>

Birth Date: 18/09/21 ID No: 19134021246

MEADOWSLEA L226 <sup>SV</sup>

MEADOWSLEA P700 <sup>SV</sup>

MEADOWSLEA H117

TURIHAUA LOYALTY L44 (ET)

MEADOWSLEA Q368 <sup>PV</sup>

MEADOWSLEA J624



### INDEXES

SR

HD

+\$120

+\$97

### SEPTEMBER 2023 TRANSTASMAN ANGUS CATTLE EVALUATION

CED	DTRS	GL	BW	200	400	600	MCW	Milk
+2.5	-1.2	-4.2	+4.1	+35	+68	+78	+59	+16
49%	35%	45%	73%	69%	70%	72%	65%	46%
SS	DC	CW	EMA	Rib Fat	Rump	RBV %	IMF %	
+1.9	-4.6	+37	+1.4	+1.7	+2.0	+0.0	+1.1	
72%	36%	58%	53%	57%	56%	51%	52%	

**Comments:** A P700 x Loyalty cross with moderate birthweight and good calving ease. Clean shoulders and a good square moderate framed type. Milk and days to calving figures are strong. Grand-dam was a great old cow going back to Infinity who was sold to Tony Waller in this year's female sale as a 10-year-old.

Purchaser:

Price: \$

## Lot: 30 MEADOWSLEA S457 <sup>PV</sup>

Birth Date: 05/10/21 ID No: 19134021457

MEADOWSLEA F540

MEADOWSLEA L256

MEADOWSLEA H246

MEADOWSLEA F660

MEADOWSLEA H227

MEADOWSLEA F773



### INDEXES

SR

HD

+\$109

+\$83

### SEPTEMBER 2023 TRANSTASMAN ANGUS CATTLE EVALUATION

CED	DTRS	GL	BW	200	400	600	MCW	Milk
+0.6	-2.7	-5.5	+4.2	+27	+61	+69	+70	+18
50%	38%	46%	75%	71%	72%	75%	69%	54%
SS	DC	CW	EMA	Rib Fat	Rump	RBV %	IMF %	
+2.6	-5.7	+23	-0.7	+1.6	+1.5	+0.4	-0.1	
74%	41%	61%	55%	59%	59%	54%	54%	

**Comments:** Moderate birth weight and clean shoulders make this chap suitable for heifer mating. Good deep body and square type. His scrotal size and milk figures are strong and although his EBV doesn't reflect it he had the third best actual EMA.

Purchaser:

Price: \$

# 2 YEAR OLD ANGUS BULLS

## Lot: 31 MEADOWSLEA S208 <sup>PV</sup>

Birth Date: 14/09/21 ID No: 19134021208

TAIMATE LAZARUS L12 <sup>PV</sup>

TIMPERLEA QUAIN 763 <sup>PV</sup>

TIMPERLEA NAERI 578 <sup>SV</sup>

MEADOWSLEA N166 <sup>SV</sup>

MEADOWSLEA Q168 <sup>PV</sup>

MEADOWSLEA H108



INDEXES	
SR	HD
+\$135	+\$98

### SEPTEMBER 2023 TRANSTASMAN ANGUS CATTLE EVALUATION

CED	DTRS	GL	BW	200	400	600	MCW	Milk
+3.0	+3.4	-3.6	+3.9	+37	+63	+77	+57	+12
51%	38%	57%	73%	68%	69%	66%	63%	49%
SS	DC	CW	EMA	Rib Fat	Rump	RBY %	IMF %	
+1.6	-5.6	+34	+2.4	+2.8	+2.3	-0.2	+1.5	
72%	35%	56%	53%	57%	56%	52%	52%	

**Comments:** Heifer mating once again with strong calving ease and low birthweight. Good easy doing type with strong hindquarter on a moderate frame. Days to calving is exceptional and rib and rump fat are strong too. A Quain x N166 cross which should be good, grand-dam is the great cow H108 and as expected he has abundant IMF too. Self-replacing index at 146 is in the top 10% of the Angus breed.

Purchaser:

Price: \$

## Lot: 32 MEADOWSLEA S403 <sup>PV</sup>

Birth Date: 01/10/21 ID No: 19134021403

TURIHAUA CRUMP E5 (ET) <sup>SV</sup>

MEADOWSLEA N166 <sup>SV</sup>

MEADOWSLEA G922 <sup>SV</sup>

MEADOWSLEA L141

MEADOWSLEA P553 <sup>SV</sup>

MEADOWSLEA H254 <sup>SV</sup>



INDEXES	
SR	HD
+\$134	+\$80

### SEPTEMBER 2023 TRANSTASMAN ANGUS CATTLE EVALUATION

CED	DTRS	GL	BW	200	400	600	MCW	Milk
-2.5	+2.2	-3.7	+5.0	+37	+67	+83	+82	+12
50%	39%	60%	74%	70%	71%	74%	68%	52%
SS	DC	CW	EMA	Rib Fat	Rump	RBY %	IMF %	
+2.5	-5.7	+31	+4.5	+3.7	+2.9	+0.6	+0.1	
72%	41%	60%	56%	59%	59%	54%	54%	

**Comments:** Moderate framed, easy doing, square type with very strong backend and good coat. Scrotal size and EMA is strong, his days to calving is in the top 10%, and rib fat in the top 5% which gets him a good index again.

Purchaser:

Price: \$





**Stud Bull EBV's**



**Igenity Commercial Females**



**Greater genetic gain & profit**

# Want to get the most out of your herd?

Start by using DNA testing portfolio **Igenity<sup>®</sup>**

**To find out more information**

**Ella Holland**

National Territory Manager

**M:** 027 386 2410

**E:** ella@pbbnz.com

**pbbnz.com**

**Trudy Bensted**

South Island Territory Manager

**M:** 027 211 1916

**E:** trudy@pbbnz.com

**pbbnz.com**

**Igenity<sup>®</sup>**



Livestock Intelligence<sup>™</sup>

MSD Animal Health Intelligence



# YEARLING ANGUS BULLS

**Lot: 33 MEADOWSLEA T283<sup>DV</sup>**

**Birth Date:** 20/09/22 **ID No:** 19134022283

MEADOWSLEA F540

**MEADOWSLEA M564<sup>SV</sup>**

MEADOWSLEA G1000<sup>SV</sup>

MEADOWSLEA K924

**MEADOWSLEA M588**

MEADOWSLEA K979

## INDEXES

**SR**

**HD**

**+\$143**

**+\$92**

## SEPTEMBER 2023 TRANSTASMAN ANGUS CATTLE EVALUATION

CED	DTRS	GL	BW	200	400	600	MCW	Milk
<b>-0.7</b>	<b>-2.7</b>	<b>-3.9</b>	<b>+3.8</b>	<b>+38</b>	<b>+77</b>	<b>+97</b>	<b>+76</b>	<b>+14</b>
53%	39%	82%	75%	65%	64%	65%	64%	54%
SS	DC	CW	EMA	Rib Fat	Rump	RBY %	IMF %	
<b>+2.4</b>	<b>-5.5</b>	<b>+38</b>	<b>+4.4</b>	<b>+3.8</b>	<b>+4.3</b>	<b>-0.4</b>	<b>+2.6</b>	
57%	41%	55%	53%	56%	55%	52%	53%	

**Comments:** Terrific performance to start the yearling offering. This son of M564 goes back to the great cow G1000 of course, and like all her descendants scanned with massive EMA - the second largest in the sale! Also had the third heaviest weaning and yearling weights, and the 5th equal scrotal size. His IMF ranks him in the top 10% of the breed and he had the 9th best actual scan. His fertility is great too with days to calving in the top 10% and fats in the top 5%. Great pedigree with both F540 and Crump as well as the great G1000. Great length and depth to him. Thickness, width across the top with a quality head and clean shoulders making him an ideal heifer mating prospect. Good strong coat with balance and style.

**Purchaser:**

**Price: \$**

**Lot: 34 MEADOWSLEA T133<sup>PV</sup>**

**Birth Date:** 04/09/22 **ID No:** 19134022133

MEADOWSLEA N465<sup>SV</sup>

**MEADOWSLEA R623<sup>PV</sup>**

MEADOWSLEA L199

MEADOWSLEA P731<sup>SV</sup>

**MEADOWSLEA R612<sup>PV</sup>**

MEADOWSLEA P753<sup>SV</sup>

## INDEXES

**SR**

**HD**

**+\$111**

**+\$101**

## SEPTEMBER 2023 TRANSTASMAN ANGUS CATTLE EVALUATION

CED	DTRS	GL	BW	200	400	600	MCW	Milk
<b>+1.6</b>	<b>-0.6</b>	<b>-4.9</b>	<b>+4.2</b>	<b>+38</b>	<b>+76</b>	<b>+96</b>	<b>+81</b>	<b>+19</b>
45%	29%	47%	70%	57%	55%	58%	55%	36%
SS	DC	CW	EMA	Rib Fat	Rump	RBY %	IMF %	
<b>+2.5</b>	<b>-4.6</b>	<b>+41</b>	<b>+3.1</b>	<b>+1.9</b>	<b>+1.9</b>	<b>+0.0</b>	<b>+1.7</b>	
46%	29%	46%	40%	43%	43%	40%	39%	

**Comments:** Terrific balance and style to this R623 son out of a 2-year heifer. He went on to be second heaviest at 400 days. IMF EBV is in the top 20% and he scanned well for EMA too. Scrotal size, fats, and days to calving are all strong as well. Width across the top, a strong hindquarter, depth and thickness with a powerful head. Great pull up and outlook.

**Purchaser:**

**Price: \$**

# YEARLING ANGUS BULLS

## Lot: 35 MEADOWSLEA T124 <sup>PV</sup>

Birth Date: 03/09/22 ID No: 19134022124

MEADOWSLEA N465 <sup>SV</sup>

MEADOWSLEA R623 <sup>PV</sup>

MEADOWSLEA L199

MEADOWSLEA P915

MEADOWSLEA R860 <sup>PV</sup>

MEADOWSLEA P592 <sup>SV</sup>

INDEXES	
SR	HD
+\$115	+\$108

### SEPTEMBER 2023 TRANSTASMAN ANGUS CATTLE EVALUATION

CED	DTRS	GL	BW	200	400	600	MCW	Milk
+4.3	+0.5	-5.3	+3.1	+35	+72	+93	+74	+20
39%	26%	49%	58%	53%	52%	53%	50%	37%

SS	DC	CW	EMA	Rib Fat	Rump	RBV %	IMF %
+2.9	-5.3	+40	-0.6	+3.2	+3.4	-0.5	+1.6
46%	29%	43%	41%	45%	44%	40%	40%

**Comments:** Another top heifer's calf here by the same sire, R623, and showing the same balance and outlook. He was the 9th best at weaning and is now the heaviest yearling in the sale. Outstanding raw data: scrotal size was second best, EMA 5th best, and he had the largest rib fat scan! Ideal figures for heifer mating with short gestation and low birthweight. Great topline, real width, depth, and thickness - another top pick.

Purchaser:

Price: \$

## Lot: 36 MEADOWSLEA T161 <sup>PV</sup>

Birth Date: 14/09/22 ID No: 19134022161

GOLDWYN H817 <sup>SV</sup>

TURIROA PANTHER 18P241 (ET) <sup>PV</sup>

TURIROA L120 (ET)

MEADOWSLEA MEAT MACHINE G914 <sup>SV</sup>

MEADOWSLEA N255

MEADOWSLEA K804

INDEXES	
SR	HD
+\$136	+\$100

### SEPTEMBER 2023 TRANSTASMAN ANGUS CATTLE EVALUATION

CED	DTRS	GL	BW	200	400	600	MCW	Milk
+1.1	+1.1	-5.0	+4.9	+40	+77	+96	+80	+15
50%	37%	55%	73%	63%	62%	62%	61%	50%

SS	DC	CW	EMA	Rib Fat	Rump	RBV %	IMF %
+1.9	-5.0	+45	+1.9	+2.8	+3.2	+0.6	-1.0
56%	37%	52%	51%	53%	53%	49%	51%

**Comments:** First of the Panther yearlings in this offering showing the exceptional hindquarter they all possess. He was the second heaviest at weaning, and his EBVs are strong with days to calving in the top 20%, strong fats, and a very good self-replacing index. Strong coat, great balance, and the real square back end we get from the Crump bloodline. A good pedigree with Crump, F540, and Meat Machine all featuring. Dam breeding well with a son sold to Bellview in the 2023 sale. Terrific width, thickness, and depth - an impressive bull. He was the second heaviest at weaning, and his EBVs are strong with days to calving in the top 20%, strong fats, and a very good self-replacing index.

Purchaser:

Price: \$

MEADOWSLEA  
ANGUS & SHEEP GENETICS

# YEARLING ANGUS BULLS

## Lot: 37 MEADOWSLEA T163 <sup>PV</sup>

Birth Date: 14/09/22 ID No: 19134022163

TURIHAUA CRUMBLE Y167

TURIHAUA CRUMP E5 (ET) <sup>SV</sup>

TURIHAUA Q263

MATAURI REALITY 839

MEADOWSLEA K767

MEADOWSLEA 147

INDEXES	
SR	HD
+\$110	+\$107

### SEPTEMBER 2023 TRANSTASMAN ANGUS CATTLE EVALUATION

CED	DTRS	GL	BW	200	400	600	MCW	Milk
+5.2	+2.6	-7.7	+2.9	+31	+58	+76	+78	+14
61%	53%	83%	75%	68%	67%	67%	67%	64%

SS	DC	CW	EMA	Rib Fat	Rump	RBY %	IMF %
+1.1	-5.5	+22	+1.3	+3.8	+2.5	+0.0	+1.5
64%	55%	63%	62%	64%	64%	61%	64%

**Comments:** Great cross here - a direct son of Crump out of a high-performing Reality cow who is also the mother of lot 8 in the 2-year-old catalogue. Stretch and style about this fellow with a great pull up and rein of neck. Terrific heifer mating figures with calving ease and low birthweight, with short gestation in the top 5% of the breed! Days to calving, fats, and IMF are also strong. One to watch!

Purchaser:

Price: \$

## Lot: 38 MEADOWSLEA T293 <sup>PV</sup>

Birth Date: 21/09/22 ID No: 19134022293

MEADOWSLEA K904

MEADOWSLEA N119 <sup>SV</sup>

MEADOWSLEA E350

GOLDWYN 017 <sup>SV</sup>

MEADOWSLEA M626

MEADOWSLEA H126 <sup>SV</sup>

INDEXES	
SR	HD
+\$123	+\$90

### SEPTEMBER 2023 TRANSTASMAN ANGUS CATTLE EVALUATION

CED	DTRS	GL	BW	200	400	600	MCW	Milk
+1.5	+1.2	-4.9	+3.3	+28	+53	+70	+59	+15
50%	36%	54%	74%	64%	62%	64%	63%	50%

SS	DC	CW	EMA	Rib Fat	Rump	RBY %	IMF %
+2.4	-6.2	+17	+3.4	+2.4	+2.4	+0.1	+2.1
56%	40%	53%	51%	54%	53%	50%	51%

**Comments:** A strong bull to follow here with great head, foot, and bone. Goes back to the Goldwyn 017 bloodline that always shows great IMF and this guy is no exception. Grand-dam H126 is the mother of stud sire K703 and was sold in the 2022 Female Sale to Picton Park Angus. Low birthweight with exceptionally short days to calving on his EBVs. He was 5th heaviest at weaning and scanned with the 4th best actual rib fat as well. Well balanced bull with nice topline and a well-filled hindquarter.

Purchaser:

Price: \$

# YEARLING ANGUS BULLS

## Lot: 39 MEADOWSLEA T326 <sup>DV</sup>

Birth Date: 23/09/22 ID No: 19134022326

MEADOWSLEA P674 <sup>SV</sup>

MEADOWSLEA R619 <sup>PV</sup>

MEADOWSLEA P777 <sup>SV</sup>

RATANUI LAD 21

MEADOWSLEA L207

MEADOWSLEA H229

INDEXES	
SR	HD
+\$111	+\$107

### SEPTEMBER 2023 TRANSTASMAN ANGUS CATTLE EVALUATION

CED	DTRS	GL	BW	200	400	600	MCW	Milk
+5.3	+1.5	-4.9	+2.4	+28	+56	+70	+64	+15
46%	30%	38%	71%	59%	56%	59%	57%	43%

SS	DC	CW	EMA	Rib Fat	Rump	RBV %	IMF %
+2.1	-4.3	+23	+2.7	+2.7	+3.3	+0.7	-0.1
50%	31%	48%	41%	45%	45%	41%	41%

**Comments:** Nice square bull to start this pen of thick deep yearlings. Great calving ease and an exceptionally low birthweight. Good quality bull with a great coat and really strong hindquarter. Fats are in the top 15% of the breed, his actual scrotal size was 8th best and his actual IMF was a lot stronger than his EBV predicted.

Purchaser:

Price: \$

## Lot: 40 MEADOWSLEA T282 <sup>PV</sup>

Birth Date: 20/09/22 ID No: 19134022282

MEADOWSLEA MEAT MACHINE G914 <sup>SV</sup>

MEADOWSLEA K703 <sup>SV</sup>

MEADOWSLEA H126 <sup>SV</sup>

GLANWORTH WAIGROUP 14129

MEADOWSLEA N108

MEADOWSLEA L199

INDEXES	
SR	HD
+\$136	+\$114

### SEPTEMBER 2023 TRANSTASMAN ANGUS CATTLE EVALUATION

CED	DTRS	GL	BW	200	400	600	MCW	Milk
+6.7	+3.7	-3.1	+1.9	+28	+56	+72	+44	+17
52%	38%	49%	74%	65%	64%	64%	64%	54%

SS	DC	CW	EMA	Rib Fat	Rump	RBV %	IMF %
+1.9	-5.2	+28	+5.0	+4.4	+4.6	+0.5	+0.4
59%	42%	55%	53%	55%	55%	51%	52%

**Comments:** Another very similar bull to follow, this time from the Meat Machine bloodline going back to a very good cow. Mother is also the mother of R818, sold to Jade Park Angus in Australia! Super low birthweight, thick deep and square with exceptional muscle, fats, and a good index. His data is very impressive with the 8th best actual EMA, 2nd best rib fat, 6th best IMF, and 10th best 400-day weight! Calving ease is in the top 15% and birthweight in the lowest 10% so this is a sure bet for heifer mating! Given this background he must attract some attention!

Purchaser:

Price: \$

# YEARLING ANGUS BULLS

## Lot: 41 MEADOWSLEA T459

Birth Date: 07/10/22 ID No: 19134022459

MEADOWSLEA M429

MEADOWSLEA R646 <sup>PV</sup>

MEADOWSLEA M542

MEADOWSLEA L226 <sup>SV</sup>

MEADOWSLEA Q451 <sup>PV</sup>

MEADOWSLEA M1056

INDEXES	
SR	HD
+\$126	+\$103

### SEPTEMBER 2023 TRANSTASMAN ANGUS CATTLE EVALUATION

CED	DTRS	GL	BW	200	400	600	MCW	Milk
+2.2	-0.2	-3.4	+4.0	+38	+74	+93	+73	+14
47%	32%	51%	70%	58%	56%	58%	58%	43%

SS	DC	CW	EMA	Rib Fat	Rump	RBV %	IMF %
+2.8	-4.3	+40	+3.6	+2.0	+2.9	+0.2	+0.7
50%	31%	47%	44%	47%	47%	43%	44%

**Comments:** Another very similar bull to follow, the first to be offered by our keeper R646. Lovely thick square body type with a great coat. Well balanced quality bull - a good pick. Birthweight and calving ease suitable for mating heifers, with good fats and an impressive scrotal size indicating early puberty. This gives him a strong index in the top 25% of the breed.

Purchaser:

Price: \$

## Lot: 42 MEADOWSLEA T332 <sup>PV</sup>

Birth Date: 24/09/22 ID No: 19134022332

MEADOWSLEA N465 <sup>SV</sup>

MEADOWSLEA R623 <sup>PV</sup>

MEADOWSLEA L199

MEADOWSLEA N119 <sup>SV</sup>

MEADOWSLEA R733 <sup>PV</sup>

MEADOWSLEA K977

INDEXES	
SR	HD
+\$104	+\$110

### SEPTEMBER 2023 TRANSTASMAN ANGUS CATTLE EVALUATION

CED	DTRS	GL	BW	200	400	600	MCW	Milk
+5.1	+1.5	-5.8	+2.7	+32	+66	+83	+69	+20
46%	30%	52%	71%	58%	56%	59%	57%	40%

SS	DC	CW	EMA	Rib Fat	Rump	RBV %	IMF %
+2.4	-4.6	+31	+2.7	+2.7	+2.8	-0.4	+2.8
49%	32%	48%	42%	46%	46%	42%	42%

**Comments:** Another moderate, deep bodied bull by R623 again with some F540 down the dam side. Great heifer mating figures with calving ease, short gestation and very low birthweight; and as always with the R623's very good IMF - this time in the top 5% of the breed! He was 9th heaviest at 400 days and has strong fertility EBVs with scrotal size, fats, and days to calving all very good.

Purchaser:

Price: \$

# YEARLING ANGUS BULLS

**Lot: 43 MEADOWSLEA T190 <sup>PV</sup>**

**Birth Date:** 16/09/22 **ID No:** 19134022190

RANGATIRA COMMODORE 13-19

**RANGATIRA 16209 <sup>SV</sup>**

KAHARAU 09-8703

KAYJAY FREEDOM I36

**MEADOWSLEA M542**

MEADOWSLEA H205

INDEXES	
SR	HD
+\$108	+\$99

## SEPTEMBER 2023 TRANSTASMAN ANGUS CATTLE EVALUATION

CED	DTRS	GL	BW	200	400	600	MCW	Milk
+2.1	-0.9	-4.3	+4.4	+32	+61	+83	+75	+14
49%	32%	56%	73%	63%	62%	63%	62%	50%
SS	DC	CW	EMA	Rib Fat	Rump	RBV %	IMF %	
+2.8	-4.0	+31	+4.3	+3.2	+4.1	+0.9	-1.2	
57%	31%	52%	48%	51%	51%	47%	47%	

**Comments:** A very well-bred son of the high performing Rangatira 209, going back to Braveheart on the dam side. Mother is also the dam of our 2022 keeper bull R646! Thick deep and square once again with good muscle and fats. He had the 8th biggest actual EMA and his fats are in the top 10% of the breed with a good scrotal EBV as well. Very sound on the ground and should develop a really good back end.

**Purchaser:**

**Price:** \$

**Lot: 44 MEADOWSLEA T138 <sup>PV</sup>**

**Birth Date:** 09/09/22 **ID No:** 19134022138

RANGATIRA COMMODORE 13-19

**RANGATIRA 16209 <sup>SV</sup>**

KAHARAU 09-8703

MEADOWSLEA J457

**MEADOWSLEA L117**

MEADOWSLEA J447

INDEXES	
SR	HD
+\$106	+\$107

## SEPTEMBER 2023 TRANSTASMAN ANGUS CATTLE EVALUATION

CED	DTRS	GL	BW	200	400	600	MCW	Milk
+5.9	+4.4	-6.1	+2.0	+25	+54	+70	+72	+15
49%	33%	55%	73%	63%	62%	63%	62%	50%
SS	DC	CW	EMA	Rib Fat	Rump	RBV %	IMF %	
+2.0	-4.9	+22	+0.9	+3.2	+3.2	+0.5	-0.1	
53%	34%	52%	48%	51%	51%	47%	47%	

**Comments:** By the same sire, great pedigree going back to Crump and Reality on the dam side, giving great calving ease, short gestation, and a low birthweight in the top 10%. Big fats at scanning and the 7th best actual EMA - much stronger than the EBV predicted. Thick deep and square with the immaculate structure we get from the Rangatira bloodline - worth a good look.

**Purchaser:**

**Price:** \$

# YEARLING ANGUS BULLS

## Lot: 45 MEADOWSLEA T415 <sup>PV</sup>

Birth Date: 30/09/22 ID No: 19134022415

TURIHAUA CRUMP E5 (ET) <sup>SV</sup>

MEADOWSLEA N166 <sup>SV</sup>

MEADOWSLEA G922 <sup>SV</sup>

MEADOWSLEA F540

MEADOWSLEA K853

MEADOWSLEA D188

INDEXES	
SR	HD
+\$79	+\$100

### SEPTEMBER 2023 TRANSTASMAN ANGUS CATTLE EVALUATION

CED	DTRS	GL	BW	200	400	600	MCW	Milk
+2.8	+2.8	-4.9	+3.5	+33	+64	+90	+88	+18
52%	40%	56%	74%	66%	65%	66%	64%	56%

SS	DC	CW	EMA	Rib Fat	Rump	RBY %	IMF %
+1.0	-4.2	+37	+0.3	+3.2	+2.6	+0.2	-0.2
61%	45%	57%	56%	58%	58%	54%	57%

**Comments:** Very well bred again, by N166 out of an F540 cow who bred a top bull sold to Flagstaff Station at \$14,000. Nicely balanced showing the great thickness and depth of body we expect from these bloodlines. Low birthweight with positive calving ease and a rib fat EBV in the top 10% of the breed. Very easy-doing type with great hill country coat. A very good well-balanced bull.

Purchaser:

Price: \$

## Lot: 46 MEADOWSLEA T575

Birth Date: 23/10/22 ID No: 19134022575

TURIHAUA CRUMP E5 (ET) <sup>SV</sup>

MEADOWSLEA R692 <sup>PV</sup>

MEADOWSLEA M475

MEADOWSLEA M429

MEADOWSLEA P513 <sup>SV</sup>

MEADOWSLEA M467

INDEXES	
SR	HD
+\$120	+\$109

### SEPTEMBER 2023 TRANSTASMAN ANGUS CATTLE EVALUATION

CED	DTRS	GL	BW	200	400	600	MCW	Milk
+5.4	+3.9	-6.0	+2.8	+30	+65	+83	+74	+16
46%	35%	49%	70%	58%	57%	59%	57%	44%

SS	DC	CW	EMA	Rib Fat	Rump	RBY %	IMF %
+1.9	-5.5	+30	-0.2	+2.9	+2.9	+0.0	+0.8
52%	35%	49%	46%	50%	49%	46%	47%

**Comments:** Another very low birthweight bull with strong calving ease, out of a cow by M429, a son of the \$100,000 Rangatira. She also bred a son sold to Hamish Blakely in the June 2023 sale. Clean shouldered, upstanding bull with good style about him. Rib fat and days to calving in the top 10% indicating strong fertility.

Purchaser:

Price: \$



# YEARLING ANGUS BULLS

## Lot: 47 MEADOWSLEA T160 <sup>PV</sup>

Birth Date: 14/09/22 ID No: 19134022160

TAIMATE LAZARUS L12 <sup>PV</sup>

TIMPERLEA QUAIN 763 <sup>PV</sup>

TIMPERLEA NAERI 578 <sup>SV</sup>

WOODBANK 7017 <sup>SV</sup>

MEADOWSLEA R561 <sup>PV</sup>

MEADOWSLEA P767 <sup>SV</sup>

### INDEXES

SR

HD

+\$168

+\$120

### SEPTEMBER 2023 TRANSTASMAN ANGUS CATTLE EVALUATION

CED	DTRS	GL	BW	200	400	600	MCW	Milk
+8.0	+5.2	-5.6	+1.2	+36	+68	+77	+49	+13
48%	35%	55%	71%	60%	58%	60%	57%	45%
SS	DC	CW	EMA	Rib Fat	Rump	RBV %	IMF %	
+2.0	-6.4	+36	+3.0	+4.0	+4.7	-0.7	+2.2	
54%	31%	50%	49%	52%	51%	47%	50%	

**Comments:** The first of the Timperlea Quain sons in this offering. Superb heifer mating figures here, out of a cow by the \$32,000 Woodbank bull. Grand-dam P767 was the mother of our top-price bull in June 2023, sold to Mt Possession Angus at \$20,500. Exceptional calving ease in the top 10%, terrific low birthweight in the top 5%, with short gestation and low mature cow size. Rib and rump fat are in the top 5%, IMF is in the top 10%, and that amazing self-replacing index the top 1% of the breed!

Purchaser:

Price: \$

## Lot: 48 MEADOWSLEA T339 <sup>PV</sup>

Birth Date: 24/09/22 ID No: 19134022339

TURIROA 14830 (ET) <sup>SV</sup>

MEADOWSLEA P674 <sup>SV</sup>

MEADOWSLEA K700

MEADOWSLEA F541

MEADOWSLEA J538

MEADOWSLEA E461

### INDEXES

SR

HD

+\$136

+\$70

### SEPTEMBER 2023 TRANSTASMAN ANGUS CATTLE EVALUATION

CED	DTRS	GL	BW	200	400	600	MCW	Milk
-4.4	-2.4	-1.9	+4.6	+34	+67	+82	+58	+16
51%	35%	82%	74%	63%	61%	63%	61%	50%
SS	DC	CW	EMA	Rib Fat	Rump	RBV %	IMF %	
+2.5	-5.5	+35	+3.1	+3.3	+4.6	+0.1	+1.1	
54%	36%	52%	48%	51%	51%	47%	48%	

**Comments:** Very well-balanced bull here by P674 who has bred consistently well. Beautiful clean shoulders, nice topline, a quality bull all the way. Suitable for cows or heifers given how good his shoulder is. Scrotal size is strong while fats and days to calving place him in the top 10% of the breed. All this generates an impressive index.

Purchaser:

Price: \$



The award-winning [yourbid](#) online selling platform was developed by the Giddings Family for their 2020 Angus Female Sale which was held during the first Covid Lockdown.

The system was further developed to incorporate on-farm and online bidding, and has been used successfully for 16 further sales at Meadowslea.

It has also been use to run a number of sheep and cattle sales for other studs both in NZ and the UK.

For all enquiries to use [yourbid](#) please contact [george@yourbid.org](mailto:george@yourbid.org)

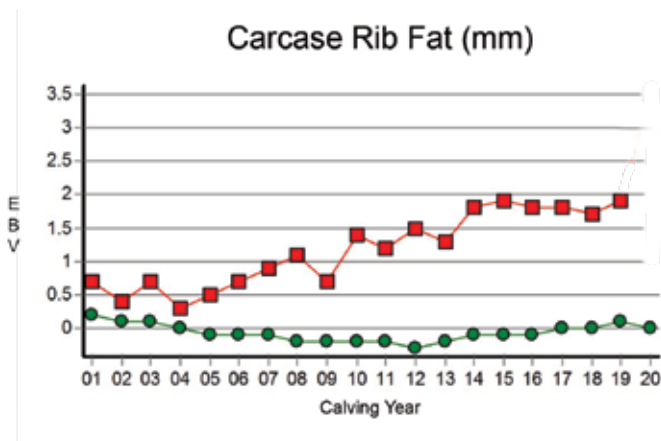


## The development of the “Meadowslea Hill Country Type”

has been the result of 25 years of selecting animals that perform the best in our hash hill country environment. Cows that can winter easily on the hill without supplements, stay in good order, calve easily and get back in calf early every year for 10 years has been the focus of our breeding programme.

Ultra-sound scanning has confirmed to us that these easy doing cattle have higher levels of Rib and Rump fat. Science has now recognised that these higher fat levels result in heifers getting in calf earlier with higher conception rates. These higher fat levels also result in increased fertility in the whole herd with earlier rebreeding and less dry cows.

**These great positive fat EBV's in the Meadowslea herd have come about simply by selecting animals that suit the Hill Country environment.**



- Meadowslea herd
- Australasian herd average

**Graph showing improvement in fat EBVs at Meadowslea while running the herd on hill country, compared with Australasian average. From TransTasman Angus Cattle Evaluation, April 2022.**

**The average rib fat EBVs of the bulls in this catalogue ranks in the top 10% of the breed in NZ.”**

# Meadowslea Proven Herd Sires



## Meadowslea F540

Trait leader for Short Gestation, Milk, and Short Days to Calving. He Ranks in the top 10% of the breed for almost every maternal and fertility trait measurable. He was ranked 3rd for Short Gestation in the BLNZ Dairy Beef Progeny Test in 2018. His progeny also performed very strongly in the BLNZ Beef Progeny Test cohort 2 – for both growth and carcass traits.



## Turihaua Crump E5

Trait Leader for Short Days to calving. 14 years old and still going strong. Over 350 calves to date at Meadowslea. His young daughters are the top breeding cows in the herd and proving to be exceptionally fertile and early maturing - resulting in his Days to Calving figure going down to minus 10 days.

## **- Breed Trait Leaders for Maternal and Fertility Traits**



### **Meadowslea Meat Machine G914**

The Bull we call the “Meat Machine” – Exceptional thickness and fertility traits. He is a Trait leader for Calving Ease, his Low Birth Weight figures are in the top 5% for the breed and his Rib and Rump Fats are off the scale. His sons are full of meat, exceptionally easy doing and very suitable for heifer mating in the harder hill country. We can’t get enough of this bloodline and he now ranks in the top 5% for Self Replacing Index as well.



### **Meadowslea K703**

A son of Meat Machine who has wonderful maternal and fertility traits and ranks in the top 10% of the breed for almost all those key traits responsible for profitability in the hill country in a self-replacing herd. His short days to calving and Rib and Rump fats are off the scale and all this combines to place him in the top 5% of the breed for the Self Replacing Index . His progeny are deep, thick, early maturing and full of muscle.

# Meadowslea Q178



His top-quality yearling sons are a feature of the offering, Deep thick and square, with powerful hindquarters and exceptional foot and bone. True Angus hill country types that will develop in to impressive adult bulls. This is the top bloodline at Meadowslea at present and descendants of the great breeding sire Rangatira 16-209. A great chance to secure one as a yearling – they will be the feature of the 2024 winter sale.

# Timperlea Quain 763



SEPTEMBER 2023 TRANSTASMAN ANGUS CATTLE EVALUATION								
CED	DTRS	GL	BW	200	400	600	MCW	Milk
+8.2	+7.0	-4.5	+1.7	+38	+69	+70	+43	+8
66%	53%	84%	86%	82%	78%	78%	76%	67%
SS	DC	CW	EMA	Rib Fat	Rump	RBV %	IMF %	
+1.6	-6.2	+35	+5.6	+2.0	+1.6	+0.1	+1.2	
73%	44%	71%	65%	69%	66%	66%	64%	

A moderate framed exceptionally well fleshed son of Taimate Lazarus. He was a feature sire in last year’s catalogue and has several impressive sons on offer again this year, with exceptional data for heifer mating

INDEXES	
SR	HD
+\$ 184	+\$ 119

*The*

• FAIRLIE BAKEHOUSE •

*South Canterbury*

*Meadowslea proudly supplies*

**FAIRLIE BAKEHOUSE**

*With the finest Angus beef*

*Come and taste these  
fantastic pies at our*

**BULL SALE  
FRIDAY 6th  
OCTOBER**







Insurance

Livestock

Agri-Supplies

Funding

Procurement

## We are a business built on the belief that people come first

Our commitment to you is to provide quality advice,  
timely deliveries and extremely competitive pricing.  
**Give us a call and we'll prove it.**

Callum Dunnnett 027 462 0126

Dean Cox 027 561 5007

Don Borlase 027 561 4025

Greg Shearer 027 476 6769

Hamish Zuppich 027 403 3025

Timaru Office 03 687 4440

Madison Taylor 021 656 851

Peter Heinz 027 208 2932

Snow Buckley 027 561 4652

Tom Gatrell 027 462 0028

Wayne Andrews 027 484 8232

officetimaru@hazlett.nz





# YEARLING ANGUS BULLS

**Lot: 49      MEADOWSLEA T251 <sup>DV</sup>**

**Birth Date:** 18/09/22      **ID No:** 19134022251

MEADOWSLEA P674 <sup>SV</sup>

**MEADOWSLEA R619 <sup>PV</sup>**

MEADOWSLEA P777 <sup>SV</sup>

GOLDWYN 017 <sup>SV</sup>

**MEADOWSLEA L323**

MEADOWSLEA G860

INDEXES	
SR	HD
+\$118	+\$104

## SEPTEMBER 2023 TRANSTASMAN ANGUS CATTLE EVALUATION

CED	DTRS	GL	BW	200	400	600	MCW	Milk
+3.4	+3.1	-5.4	+2.8	+33	+65	+88	+80	+14
48%	34%	43%	71%	59%	57%	59%	58%	44%
SS	DC	CW	EMA	Rib Fat	Rump	RBY %	IMF %	
+2.1	-5.3	+35	-0.3	+2.5	+3.3	+0.1	+0.5	
51%	33%	48%	43%	46%	46%	42%	43%	

**Comments:** Another very well put together bull with beautiful clean shoulders. Low birthweight, short gestation, and good calving ease as well. Goes back to the Goldwyn bloodline. A nice sound, quality type of bull.

**Purchaser:**

**Price:** \$

**Lot: 50      MEADOWSLEA T443**

**Birth Date:** 06/10/22      **ID No:** 19134022443

TURIROA RAMBLE 11541 (ET)

**TURIROA 14830 (ET) <sup>SV</sup>**

TURIROA TULIP 459

MEADOWSLEA J479

**MEADOWSLEA N430**

MEADOWSLEA H167

INDEXES	
SR	HD
+\$75	+\$62

## SEPTEMBER 2023 TRANSTASMAN ANGUS CATTLE EVALUATION

CED	DTRS	GL	BW	200	400	600	MCW	Milk
-5.9	-2.8	-2.0	+5.2	+34	+64	+90	+88	+10
52%	39%	49%	74%	65%	64%	65%	64%	54%
SS	DC	CW	EMA	Rib Fat	Rump	RBY %	IMF %	
+2.4	-3.7	+33	-1.4	+0.6	+1.1	+0.1	+0.7	
57%	39%	55%	52%	54%	54%	51%	51%	

**Comments:** Beautifully balanced, clean shouldered, upstanding type with a bit more frame. Plenty of scope and scale about him and will develop into a great herd sire for mating adult cows. Strong scrotal size EBV coming from the sire of dam J479 reflects fertility and early maturity.

**Purchaser:**

**Price:** \$

# YEARLING ANGUS BULLS

**Lot: 51      MEADOWSLEA T356 <sup>PV</sup>**

**Birth Date:** 27/09/22      **ID No:** 19134022356

TAIMATE LAZARUS L12 <sup>PV</sup>

**TIMPERLEA QUAIN 763 <sup>PV</sup>**

TIMPERLEA NAERI 578 <sup>SV</sup>

RATANUI NUGGET 605

**MEADOWSLEA R931 <sup>PV</sup>**

MEADOWSLEA M626

INDEXES	
SR	HD
+\$157	+\$96

## SEPTEMBER 2023 TRANSTASMAN ANGUS CATTLE EVALUATION

CED	DTRS	GL	BW	200	400	600	MCW	Milk
+1.9	+2.8	-2.3	+3.0	+35	+64	+76	+56	+8
49%	35%	54%	72%	61%	59%	59%	57%	46%
SS	DC	CW	EMA	Rib Fat	Rump	RBY %	IMF %	
+1.8	-5.8	+29	+5.9	+2.8	+2.9	+0.0	+1.9	
55%	32%	50%	50%	53%	52%	48%	51%	

**Comments:** Nice compact type here with lovely clean shoulders for heifer mating. Very thick, muscular bull. Has a great hindquarter with real balance, style, and top figures! Out of a 2-year heifer, he has good calving ease and low birthweight. His actual EMA was 5th best at scanning and he had the top rib fat measurement. IMF is also strong and his days to calving EBV is in the top 5% with a good low mature cow weight, which combines for an incredible self-replacing index!

**Purchaser:**

**Price:** \$

**Lot: 52      MEADOWSLEA T452**

**Birth Date:** 07/10/22      **ID No:** 19134022452

TAIMATE LAZARUS L12 <sup>PV</sup>

**TIMPERLEA QUAIN 763 <sup>PV</sup>**

TIMPERLEA NAERI 578 <sup>SV</sup>

MEADOWSLEA M452

**MEADOWSLEA R928 <sup>PV</sup>**

MEADOWSLEA M440

INDEXES	
SR	HD
+\$137	+\$94

## SEPTEMBER 2023 TRANSTASMAN ANGUS CATTLE EVALUATION

CED	DTRS	GL	BW	200	400	600	MCW	Milk
-0.5	+0.5	-3.4	+6.3	+45	+82	+102	+90	+9
49%	36%	56%	72%	61%	60%	60%	58%	47%
SS	DC	CW	EMA	Rib Fat	Rump	RBY %	IMF %	
+2.1	-5.0	+46	+2.6	+1.4	+1.1	+0.1	+0.7	
56%	33%	51%	50%	53%	53%	48%	52%	

**Comments:** Another of these Timperlea Quain sons with a bit more scale this time. Again, has lovely clean shoulders, depth, thickness, and some scope about him. Backed up on paper by a very good index.

**Purchaser:**

**Price:** \$

# YEARLING ANGUS BULLS

**Lot: 53 MEADOWSLEA T236 <sup>PV</sup>**

**Birth Date:** 17/09/22 **ID No:** 19134022236

TAIMATE LAZARUS L12 <sup>PV</sup>

**MEADOWSLEA P565 <sup>SV</sup>**

MEADOWSLEA G943

TURIHAUA CRUMP E5 (ET) <sup>SV</sup>

**MEADOWSLEA M469**

MEADOWSLEA F556

INDEXES	
SR	HD
<b>+\$115</b>	<b>+\$102</b>

## SEPTEMBER 2023 TRANSTASMAN ANGUS CATTLE EVALUATION

CED	DTRS	GL	BW	200	400	600	MCW	Milk
<b>+4.1</b>	<b>+4.0</b>	<b>-5.7</b>	<b>+2.6</b>	<b>+29</b>	<b>+57</b>	<b>+77</b>	<b>+66</b>	<b>+16</b>
51%	40%	55%	74%	64%	62%	64%	62%	52%
SS	DC	CW	EMA	Rib Fat	Rump	RBV %	IMF %	
<b>+2.1</b>	<b>-5.9</b>	<b>+29</b>	<b>+0.9</b>	<b>+2.6</b>	<b>+2.3</b>	<b>-0.1</b>	<b>+1.8</b>	
58%	39%	54%	53%	55%	54%	51%	53%	

**Comments:** Another deep bodied bull that presents well. Nice clean shoulder, super low birthweight, short gestation, and excellent fertility with days to calving in the top 5%. Good IMF as well. Shows the depth and thickness all these P565 sons have - out of a Crump cow who is also the dam of lot 9 in this sale, which makes a very good pedigree.

**Purchaser:**

**Price: \$**

**Lot: 54 MEADOWSLEA T128 <sup>PV</sup>**

**Birth Date:** 03/09/22 **ID No:** 19134022128

WAITAWHETA N41 <sup>SV</sup>

**ROCKLEY R41 <sup>PV</sup>**

TE ATARANGI MISSY P802 <sup>SV</sup>

MEADOWSLEA N166 <sup>SV</sup>

**MEADOWSLEA R605 <sup>PV</sup>**

MEADOWSLEA G819

INDEXES	
SR	HD
<b>+\$130</b>	<b>+\$104</b>

## SEPTEMBER 2023 TRANSTASMAN ANGUS CATTLE EVALUATION

CED	DTRS	GL	BW	200	400	600	MCW	Milk
<b>+2.7</b>	<b>+1.1</b>	<b>-8.1</b>	<b>+4.4</b>	<b>+41</b>	<b>+72</b>	<b>+93</b>	<b>+80</b>	<b>+14</b>
47%	36%	53%	70%	59%	57%	59%	57%	47%
SS	DC	CW	EMA	Rib Fat	Rump	RBV %	IMF %	
<b>+3.8</b>	<b>-5.6</b>	<b>+35</b>	<b>+1.5</b>	<b>+2.9</b>	<b>+2.6</b>	<b>-0.4</b>	<b>+1.9</b>	
54%	31%	49%	48%	51%	51%	46%	50%	

**Comments:** First son offered for sale by Rockley R41 who we purchased as a yearling. Shows all the maternal and fertility traits we purchased that sire for. Out of a 2-year heifer by N166, while the grand-dam produced the top Crump son L314, sold to Corey Roulston. Thick deep and square with a powerful head and strong bone. Gestation length is in the shortest 5% of the breed with the largest actual scrotal size in the catalogue! Fats and IMF were also strong. Width depth and thickness here with some data to back him up.

**Purchaser:**

**Price: \$**

**MEADOWSLEA**  
ANGUS & SHEEP GENETICS

# YEARLING ANGUS BULLS

**Lot: 55 MEADOWSLEA T472**

**Birth Date:** 08/10/22 **ID No:** 19134022472

MEADOWSLEA MEAT MACHINE G914 <sup>SV</sup>

**MEADOWSLEA K703** <sup>SV</sup>

MEADOWSLEA H126 <sup>SV</sup>

MEADOWSLEA B571

**MEADOWSLEA K041**

MEADOWSLEA G1014

INDEXES	
SR	HD
+\$95	+\$86

## SEPTEMBER 2023 TRANSTASMAN ANGUS CATTLE EVALUATION

CED	DTRS	GL	BW	200	400	600	MCW	Milk
+0.4	-1.5	-1.6	+4.1	+28	+56	+75	+65	+17
52%	38%	49%	74%	66%	65%	66%	65%	56%
SS	DC	CW	EMA	Rib Fat	Rump	RBY %	IMF %	
+1.7	-4.2	+26	+3.4	+3.5	+3.8	+0.8	-1.2	
59%	44%	56%	53%	55%	55%	52%	53%	

**Comments:** Very solid son of K703 here. Strong hindquarter, width across the top, with depth and thickness throughout. Good sound type with birthweight suitable for heifer mating. Those fats are ranked in the top 10% of the breed, reflecting easy doing ability, and his actual IMF was good.

**Purchaser:**

**Price:** \$

**Lot: 56 MEADOWSLEA T147** <sup>PV</sup>

**Birth Date:** 11/09/22 **ID No:** 19134022147

MEADOWSLEA N465 <sup>SV</sup>

**MEADOWSLEA R623** <sup>PV</sup>

MEADOWSLEA L199

MEADOWSLEA P700 <sup>SV</sup>

**MEADOWSLEA R664** <sup>PV</sup>

MEADOWSLEA P580 <sup>SV</sup>

INDEXES	
SR	HD
+\$116	+\$96

## SEPTEMBER 2023 TRANSTASMAN ANGUS CATTLE EVALUATION

CED	DTRS	GL	BW	200	400	600	MCW	Milk
+0.2	-3.6	-3.6	+5.4	+42	+78	+100	+80	+19
44%	29%	50%	71%	58%	55%	59%	56%	37%
SS	DC	CW	EMA	Rib Fat	Rump	RBY %	IMF %	
+3.0	-5.2	+46	+1.8	+2.2	+2.3	-0.4	+2.0	
48%	30%	47%	41%	45%	44%	41%	40%	

**Comments:** Nice clean shoulders on this upstanding type with a bit more stretch and scope about him. Goes back to both old Goldwyn 017 and P700 so shows good IMF as expected as well as rib and rump fat. Very strong scrotal size with the second-equal best actual and an EBV in the top 10%.

**Purchaser:**

**Price:** \$

# YEARLING ANGUS BULLS

## Lot: 57 MEADOWSLEA T259 <sup>PV</sup>

Birth Date: 19/09/22 ID No: 19134022259

TURIHAUA CRUMBLE Y167

TURIHAUA CRUMP E5 (ET) <sup>SV</sup>

TURIHAUA Q263

MEADOWSLEA F737

MEADOWSLEA H108

MEADOWSLEA F530

INDEXES	
SR	HD
+\$118	+\$80

### SEPTEMBER 2023 TRANSTASMAN ANGUS CATTLE EVALUATION

CED	DTRS	GL	BW	200	400	600	MCW	Milk
-0.2	-2.3	-4.5	+3.4	+30	+54	+72	+63	+18
60%	51%	82%	75%	68%	67%	68%	67%	65%

SS	DC	CW	EMA	Rib Fat	Rump	RBY %	IMF %
+2.0	-7.2	+21	-0.1	+4.7	+4.4	-0.9	+3.0
64%	53%	62%	61%	63%	63%	60%	62%

**Comments:** A Crump son here with wonderful heifer mating figures- low birthweight, exceptional fertility, good fats and IMF in the top few percent of the breed as well! His days to calving is incredible - in the top 1% of the breed, he had the 4th best EMA at scanning time, and those fats are right up there as well. Dam H108 has been one of our top IMF cows of all time with an EBV of +4.9 - one of the highest in NZ - and bred P808 sold to Craig Thompson for \$12,000. Grand-dam F530 was sold to Helmsdale Angus in 2020, and they also purchased her son P556 for \$18,000 that same year. With scope and scale this fellow should really develop.

Purchaser:

Price: \$

## Lot: 58 MEADOWSLEA T609

Birth Date: 01/10/22 ID No: 19134022609

MEADOWSLEA MEAT MACHINE G914 <sup>SV</sup>

MEADOWSLEA K703 <sup>SV</sup>

MEADOWSLEA H126 <sup>SV</sup>

MEADOWSLEA F540

MEADOWSLEA P855 <sup>SV</sup>

MEADOWSLEA E466

INDEXES	
SR	HD
+\$118	+\$95

### SEPTEMBER 2023 TRANSTASMAN ANGUS CATTLE EVALUATION

CED	DTRS	GL	BW	200	400	600	MCW	Milk
+1.5	-1.3	-2.7	+4.0	+32	+63	+80	+66	+18
51%	40%	52%	64%	63%	63%	62%	62%	57%

SS	DC	CW	EMA	Rib Fat	Rump	RBY %	IMF %
+2.1	-5.2	+31	+3.8	+3.5	+3.6	+0.4	+0.2
58%	46%	55%	55%	57%	56%	53%	54%

**Comments:** A K703 son out of an F540 cow, showing the depth and thickness they always leave. Moderate birthweight with plenty of growth, a great topline and a strong hindquarter. A heifer mating option with some scope and scale. Strong days to calving and fats in the top 10%.

Purchaser:

Price: \$

# YEARLING ANGUS BULLS

**Lot: 59 MEADOWSLEA T403 <sup>PV</sup>**

**Birth Date:** 02/10/22 **ID No:** 19134022403

GOLDWYN H817 <sup>SV</sup>

**TURIROA PANTHER 18P241 (ET) <sup>PV</sup>**

TURIROA L120 (ET)

MEADOWSLEA F540

**MEADOWSLEA Q143 <sup>PV</sup>**

MEADOWSLEA K899

INDEXES	
SR	HD
+\$139	+\$93

## SEPTEMBER 2023 TRANSTASMAN ANGUS CATTLE EVALUATION

CED	DTRS	GL	BW	200	400	600	MCW	Milk
-0.6	+0.3	-5.6	+5.5	+43	+84	+102	+88	+16
51%	38%	56%	73%	62%	61%	61%	59%	49%

SS	DC	CW	EMA	Rib Fat	Rump	RBY %	IMF %
+2.4	-5.5	+47	+0.3	+3.3	+3.8	+0.0	-0.4
55%	38%	52%	51%	53%	53%	49%	51%

**Comments:** A well balanced, upstanding bull here with a nice topline, strong coat, good growth and a nice balance of figures that generate a very good index. Clean enough shoulders for heifer mating. By Panther out of a cow by F540. Scrotal size is strong with days to calving and fats in the top 10% indicating strong fertility.

**Purchaser:**

**Price:** \$

**Lot: 60 MEADOWSLEA T192 <sup>DV</sup>**

**Birth Date:** 16/09/22 **ID No:** 19134022192

MEADOWSLEA P674 <sup>SV</sup>

**MEADOWSLEA R619 <sup>PV</sup>**

MEADOWSLEA P777 <sup>SV</sup>

MEADOWSLEA M486

**MEADOWSLEA P908 <sup>SV</sup>**

MEADOWSLEA K702

INDEXES	
SR	HD
+\$103	+\$105

## SEPTEMBER 2023 TRANSTASMAN ANGUS CATTLE EVALUATION

CED	DTRS	GL	BW	200	400	600	MCW	Milk
+2.6	+0.4	-4.6	+3.9	+38	+70	+97	+86	+17
44%	27%	38%	70%	58%	56%	58%	57%	39%

SS	DC	CW	EMA	Rib Fat	Rump	RBY %	IMF %
+3.1	-4.6	+39	+0.5	+1.3	+1.5	+0.6	-0.4
48%	29%	47%	40%	44%	44%	40%	40%

**Comments:** Very good quality bull to lead in this pen of thick, chunky types. Another son of R619 who bred well. Thick, deep and square, wide across the top, and a very good hindquarter. Low birthweight and good calving ease, with strong days to calving and outstanding scrotal signalling fertility. Structurally very sound with great foot and bone. Well put together and worthy of a very good look.

**Purchaser:**

**Price:** \$

# YEARLING ANGUS BULLS

**Lot: 61 MEADOWSLEA T423 <sup>PV</sup>**

**Birth Date:** 03/10/22 **ID No:** 19134022423

WOODBANK 7017 <sup>SV</sup>

**MEADOWSLEA R578 <sup>PV</sup>**

MEADOWSLEA P651 <sup>SV</sup>

TURHAUA CRUMP E5 (ET) <sup>SV</sup>

**MEADOWSLEA J629**

MEADOWSLEA A307

INDEXES	
SR	HD
+\$108	+\$91

## SEPTEMBER 2023 TRANSTASMAN ANGUS CATTLE EVALUATION

CED	DTRS	GL	BW	200	400	600	MCW	Milk
+0.8	-0.6	-3.6	+4.0	+31	+67	+90	+89	+16
48%	34%	47%	72%	60%	58%	60%	59%	47%
SS	DC	CW	EMA	Rib Fat	Rump	RBY %	IMF %	
+2.3	-5.9	+32	-0.6	+3.3	+3.8	-0.4	+1.0	
52%	35%	49%	45%	48%	48%	44%	45%	

**Comments:** Another top bull here, by a very good Woodbank 7017 son sold to Stuart Millar, and out of a top Crump cow who is also the mother of lot 28 in this sale. Top fertility with days to calving in the top 5%, fats in the top 10%, and low birthweight again. Scanned with the 6th best IMF. Thick deep and square, another bull worth a close look.

**Purchaser:**

**Price:** \$

**Lot: 62 MEADOWSLEA T307**

**Birth Date:** 22/09/22 **ID No:** 19134022307

MEADOWSLEA K703 <sup>SV</sup>

**MEADOWSLEA Q430 <sup>PV</sup>**

MEADOWSLEA M1001

MEADOWSLEA F541

**MEADOWSLEA J490**

MEADOWSLEA A474

INDEXES	
SR	HD
+\$97	+\$96

## SEPTEMBER 2023 TRANSTASMAN ANGUS CATTLE EVALUATION

CED	DTRS	GL	BW	200	400	600	MCW	Milk
+3.8	+1.8	-1.9	+2.2	+25	+53	+66	+50	+18
48%	32%	81%	72%	60%	58%	59%	58%	47%
SS	DC	CW	EMA	Rib Fat	Rump	RBY %	IMF %	
+1.5	-4.2	+26	+0.0	+3.1	+3.6	+0.1	+0.6	
52%	33%	49%	43%	47%	46%	42%	42%	

**Comments:** Nice bull here from the Meat Machine bloodline. Sire Q430 was sold to Hawkdun Pastoral for \$22,000. Mother also bred a good bull sold to David Stodart for \$10,000. Super low birthweight, good calving ease, thick deep and square with a good hindquarter. Easy-doing attributes with fats in the top 10%. Good quality bull with nice outlook.

**Purchaser:**

**Price:** \$

# YEARLING ANGUS BULLS

## Lot: 63 MEADOWSLEA T482

Birth Date: 09/10/22 ID No: 19134022482

TAIMATE LAZARUS L12 <sup>PV</sup>

MEADOWSLEA P565 <sup>SV</sup>

MEADOWSLEA G943

MEADOWSLEA L226 <sup>SV</sup>

MEADOWSLEA Q338 <sup>PV</sup>

MEADOWSLEA M643

INDEXES	
SR	HD
+\$105	+\$105

### SEPTEMBER 2023 TRANSTASMAN ANGUS CATTLE EVALUATION

CED	DTRS	GL	BW	200	400	600	MCW	Milk
+3.2	+0.6	-4.8	+4.2	+37	+71	+93	+76	+14
50%	36%	51%	73%	63%	61%	62%	61%	48%
SS	DC	CW	EMA	Rib Fat	Rump	RBY %	IMF %	
+3.0	-4.0	+40	+3.0	+0.9	+0.9	-0.1	+2.0	
54%	35%	51%	50%	53%	52%	49%	50%	

**Comments:** Nice, deep-bodied, square type of bull here by the Lazarus son P565. Clean shoulders, good calving ease, moderate birthweight, with depth and thickness. Scrotal EBV is in the top 10% of the breed and his IMF is impressive as well with old Goldwyn back in the pedigree. Solid type.

Purchaser:

Price: \$

## Lot: 64 MEADOWSLEA T493

Birth Date: 10/10/22 ID No: 19134022493

MEADOWSLEA N166 <sup>SV</sup>

MEADOWSLEA R700 <sup>PV</sup>

MEADOWSLEA J533

MEADOWSLEA K703 <sup>SV</sup>

MEADOWSLEA M459

MEADOWSLEA K009

INDEXES	
SR	HD
+\$135	+\$88

### SEPTEMBER 2023 TRANSTASMAN ANGUS CATTLE EVALUATION

CED	DTRS	GL	BW	200	400	600	MCW	Milk
-0.6	+1.0	-3.4	+3.9	+35	+64	+85	+69	+16
46%	33%	45%	72%	60%	58%	61%	59%	47%
SS	DC	CW	EMA	Rib Fat	Rump	RBY %	IMF %	
+1.7	-6.4	+34	+2.8	+2.6	+2.5	+0.5	+0.6	
52%	35%	49%	46%	49%	48%	45%	46%	

**Comments:** Another clean-shouldered, upstanding bull going back to the Meat Machine and Crump bloodlines. Nice low birthweight, good fertility, strong hindquarter, and a good index. His days to calving figure is right up there, indicating outstanding fertility, while his fats are strong as well.

Purchaser:

Price: \$



# YEARLING ANGUS BULLS

## Lot: 65 MEADOWSLEA T607

Birth Date: 01/10/22 ID No: 19134022607

MEADOWSLEA M429

MEADOWSLEA R646 <sup>PV</sup>

MEADOWSLEA M542

MEADOWSLEA G804

MEADOWSLEA J411

MEADOWSLEA G885

INDEXES	
SR	HD
+\$120	+\$109

### SEPTEMBER 2023 TRANSTASMAN ANGUS CATTLE EVALUATION

CED	DTRS	GL	BW	200	400	600	MCW	Milk
+5.2	+2.9	-3.6	+3.1	+33	+62	+77	+57	+14
44%	32%	52%	62%	58%	57%	58%	57%	49%

SS	DC	CW	EMA	Rib Fat	Rump	RBY %	IMF %
+2.7	-3.7	+32	+4.9	+3.3	+4.2	+0.3	+0.4
53%	33%	48%	45%	49%	48%	44%	45%

**Comments:** Lovely clean shoulders on this son of our 2022 keeper R646. Really good calving ease and low birthweight both in the top 25%. A lot of muscle here and outstanding fats as well. A quality bull worth a good look.

Purchaser:

Price: \$

## Lot: 66 MEADOWSLEA T299

Birth Date: 21/09/22 ID No: 19134022299

RANGATIRA 16209 <sup>SV</sup>

MEADOWSLEA Q178 <sup>PV</sup>

MEADOWSLEA M475

GLANWORTH WAIGROUP 0816 <sup>SV</sup>

MEADOWSLEA H201

MEADOWSLEA B676

INDEXES	
SR	HD
+\$111	+\$92

### SEPTEMBER 2023 TRANSTASMAN ANGUS CATTLE EVALUATION

CED	DTRS	GL	BW	200	400	600	MCW	Milk
+1.6	-0.5	-4.4	+4.0	+31	+60	+80	+69	+12
51%	37%	56%	74%	64%	63%	64%	62%	54%

SS	DC	CW	EMA	Rib Fat	Rump	RBY %	IMF %
+2.4	-4.6	+32	-0.1	+3.4	+3.9	+0.0	+0.6
58%	37%	54%	51%	55%	54%	50%	53%

**Comments:** Well-bred bull here, by the top homebred sire Q178, out of a very good old Glanworth 0816 cow who produced three previous sale bulls and did the full 10 years on the hill. Nice, thick, gutsy type with a strong hindquarter, powerful head and bone, and good easy-doing attributes with fats in the top 10%. Low birthweight and positive calving ease make him suitable for heifers as well. Will grow into a very solid bull.

Purchaser:

Price: \$

# YEARLING ANGUS BULLS

**Lot: 67      MEADOWSLEA T221 <sup>DV</sup>**

**Birth Date:** 17/09/22    **ID No:** 19134022221

MEADOWSLEA F540

**MEADOWSLEA M564 <sup>SV</sup>**

MEADOWSLEA G1000 <sup>SV</sup>

MEADOWSLEA H120

**MEADOWSLEA K888**

MEADOWSLEA F637

INDEXES	
SR	HD
+\$123	+\$100

## SEPTEMBER 2023 TRANSTASMAN ANGUS CATTLE EVALUATION

CED	DTRS	GL	BW	200	400	600	MCW	Milk
+1.6	-0.5	-5.2	+3.5	+36	+76	+94	+84	+17
53%	39%	82%	75%	65%	64%	65%	64%	55%
SS	DC	CW	EMA	Rib Fat	Rump	RBY %	IMF %	
+2.7	-5.0	+41	+3.0	+2.9	+3.6	-0.4	+2.5	
59%	41%	55%	53%	55%	55%	51%	52%	

**Comments:** Very strong performance here with this M564 son. Low birthweight, strong calving ease, plenty of length and stretch about him. Scanned with terrific EMA - second best equal - and the top IMF. Fats also in the top 10%. This bull should come on very well.

**Purchaser:**

**Price:** \$

**Lot: 68      MEADOWSLEA T402 <sup>DV</sup>**

**Birth Date:** 02/10/22    **ID No:** 19134022402

MEADOWSLEA P674 <sup>SV</sup>

**MEADOWSLEA R619 <sup>PV</sup>**

MEADOWSLEA P777 <sup>SV</sup>

TURIHAUA CRUMP E5 (ET) <sup>SV</sup>

**MEADOWSLEA J648**

MEADOWSLEA B621

INDEXES	
SR	HD
+\$87	+\$86

## SEPTEMBER 2023 TRANSTASMAN ANGUS CATTLE EVALUATION

CED	DTRS	GL	BW	200	400	600	MCW	Milk
-0.8	-0.5	-4.6	+4.6	+33	+61	+87	+93	+11
48%	34%	44%	71%	59%	57%	59%	58%	46%
SS	DC	CW	EMA	Rib Fat	Rump	RBY %	IMF %	
+1.6	-4.4	+30	+1.2	+0.3	-0.4	+0.9	+0.1	
51%	34%	49%	44%	47%	47%	43%	44%	

**Comments:** Nicely balanced son of P619, out of a Crump cow so we know to expect them deep, thick, and square. Moderate birthweight with plenty of growth and clean shoulders. Well put together, good type.

**Purchaser:**

**Price:** \$

# YEARLING ANGUS BULLS

**Lot: 69 MEADOWSLEA T295 <sup>PV</sup>**

**Birth Date:** 19/09/22 **ID No:** 19134022295

TAIMATE LAZARUS L12 <sup>PV</sup>

**MEADOWSLEA P565 <sup>SV</sup>**

MEADOWSLEA G943

MEADOWSLEA K886

**MEADOWSLEA M1008**

MEADOWSLEA K765

INDEXES	
SR	HD
+\$106	+\$101

## SEPTEMBER 2023 TRANSTASMAN ANGUS CATTLE EVALUATION

CED	DTRS	GL	BW	200	400	600	MCW	Milk
+4.0	+3.5	-6.0	+2.9	+30	+59	+77	+60	+15
49%	37%	53%	72%	62%	61%	62%	61%	50%

SS	DC	CW	EMA	Rib Fat	Rump	RBV %	IMF %
+2.5	-4.9	+32	+0.0	+2.2	+1.8	-0.3	+2.0
55%	35%	52%	51%	53%	53%	49%	51%

**Comments:** Great option for mating heifers, with a P565 son leading in this second paddock of bulls. Thick deep and square like all that bloodline, with calving ease and very low birthweight. Fertility traits are strong with scrotal size and days to calving both in the top 25% of the breed, with a very good IMF EBV and the 9th best actual. This bull is a twin - his mother M1008 is the grandmother of our 2023 keeper S160! A great hindquarter on this bull, he is worth a good look.

**Purchaser:**

**Price: \$**

**Lot: 70 MEADOWSLEA T564**

**Birth Date:** 22/10/22 **ID No:** 19134022564

RANGATIRA 16209 <sup>SV</sup>

**MEADOWSLEA Q178 <sup>PV</sup>**

MEADOWSLEA M475

MEADOWSLEA L252

**MEADOWSLEA N239**

MEADOWSLEA L313

INDEXES	
SR	HD
+\$125	+\$92

## SEPTEMBER 2023 TRANSTASMAN ANGUS CATTLE EVALUATION

CED	DTRS	GL	BW	200	400	600	MCW	Milk
+0.3	-0.8	-4.5	+4.7	+35	+72	+94	+85	+16
48%	32%	53%	73%	62%	60%	61%	59%	49%

SS	DC	CW	EMA	Rib Fat	Rump	RBV %	IMF %
+2.9	-5.7	+39	-1.4	+4.3	+5.2	+0.0	-1.0
54%	31%	51%	48%	52%	52%	47%	50%

**Comments:** Quality bull to follow by our top retained bull Q178. Mother also bred S513, who was one of the standouts in our June 2023 catalogue at lot 30, the heaviest bull in the sale, being sold at \$18,000 to Stuart Millar at Peak Hill Station. Great balance, style, and pullup about this chap. Strong fertility again with scrotal size and days to calving right up there, and fats in the top 5%! Depth, thickness, clean shoulders and a great hindquarter. Another bull who will develop very well and must be worth a very close look with this pedigree!

**Purchaser:**

**Price: \$**

**MEADOWSLEA**  
ANGUS & SHEEP GENETICS

**59**

# YEARLING ANGUS BULLS

## Lot: 71 MEADOWSLEA T503

Birth Date: 11/10/22 ID No: 19134022503

TURIHAUA RHINO L159

TURIHAUA RHINESTONE P186 <sup>PV</sup>

TURIHAUA K175

MEADOWSLEA MEAT MACHINE G914 <sup>S</sup>

MEADOWSLEA N220

MEADOWSLEA H117

### INDEXES

SR

HD

+\$123

+\$102

### SEPTEMBER 2023 TRANSTASMAN ANGUS CATTLE EVALUATION

CED	DTRS	GL	BW	200	400	600	MCW	Milk
+4.8	+2.4	-4.7	+3.4	+30	+57	+69	+46	+11
49%	35%	44%	73%	63%	62%	63%	61%	48%

SS	DC	CW	EMA	Rib Fat	Rump	RBY %	IMF %
+2.3	-4.2	+27	+0.1	+3.5	+4.4	-0.2	+0.7
57%	36%	52%	50%	53%	52%	49%	50%

**Comments:** First of the Rhinestone sons in this year's offering. They are always well-balanced bulls with plenty of style. This one is out of a Meat Machine daughter who has bred a bull sold to Greg Hand for \$10,000. Grandmother is the great H117, dam of herd sires R650 and P700. Good calving ease, low birthweight, upstanding with clean shoulders. Fats are in the top 5-10% and he has a very nice medium mature cow EBV.

Purchaser:

Price: \$

## Lot: 72 MEADOWSLEA T335 <sup>PV</sup>

Birth Date: 24/09/22 ID No: 19134022335

MEADOWSLEA D227

MEADOWSLEA F540

MEADOWSLEA D042

MEADOWSLEA K902

MEADOWSLEA M579

MEADOWSLEA K898

### INDEXES

SR

HD

+\$105

+\$106

### SEPTEMBER 2023 TRANSTASMAN ANGUS CATTLE EVALUATION

CED	DTRS	GL	BW	200	400	600	MCW	Milk
+4.4	-1.0	-6.6	+3.4	+33	+70	+86	+94	+23
56%	44%	58%	75%	66%	65%	65%	66%	59%

SS	DC	CW	EMA	Rib Fat	Rump	RBY %	IMF %
+1.6	-6.4	+32	-0.7	+3.7	+3.7	-0.8	+2.5
61%	49%	58%	57%	60%	59%	56%	58%

**Comments:** Here is a very good son of F540 himself, going back to Crump which is always such a great cross. Great heifer mating prospect with clean shoulders, very short gestation, low birthweight, and good calving ease. Strong fertility traits with days to calving and rib fat in the top 5% of the bred. IMF is also very strong - in the top 10%. Has a bit of scope and scale about him - worth a close look.

Purchaser:

Price: \$

# YEARLING ANGUS BULLS

## Lot: 73 MEADOWSLEA T357

Birth Date: 27/09/22 ID No: 19134022357

RANGATIRA 16209 <sup>SV</sup>

MEADOWSLEA Q178 <sup>PV</sup>

MEADOWSLEA M475

TURIHAUA CRUMP E5 (ET) <sup>SV</sup>

MEADOWSLEA R655 <sup>PV</sup>

MEADOWSLEA K931

INDEXES	
SR	HD
+\$123	+\$82

### SEPTEMBER 2023 TRANSTASMAN ANGUS CATTLE EVALUATION

CED	DTRS	GL	BW	200	400	600	MCW	Milk
-1.1	+1.3	-5.5	+4.1	+32	+63	+86	+83	+13
49%	35%	57%	73%	62%	60%	60%	58%	49%
SS	DC	CW	EMA	Rib Fat	Rump	RBY %	IMF %	
+2.7	-6.5	+29	-1.3	+2.9	+2.6	+0.3	-0.4	
55%	35%	52%	51%	54%	53%	49%	53%	

**Comments:** Another well bred bull here, by our highly rated Q178, and out of a good Crump heifer. Grand dam bred a top bull sold to Matt Mackenzie at \$17,000. Medium birthweight, plenty of growth, and very strong fertility once again with good scrotal EBV and outstanding days to calving. Strong fats as well which all combine for a very good index. Has all the thickness and strength we get from Q178 with a very strong hindquarter, a thick, square, meaty bull.

Purchaser:

Price: \$

## Lot: 74 MEADOWSLEA T494

Birth Date: 10/10/22 ID No: 19134022494

TURIHAUA APOLLO L383

TURIHAUA JUPITER Q353 <sup>PV</sup>

TURIHAUA L84

MEADOWSLEA K919

MEADOWSLEA M594

MEADOWSLEA K927

INDEXES	
SR	HD
+\$140	+\$90

### SEPTEMBER 2023 TRANSTASMAN ANGUS CATTLE EVALUATION

CED	DTRS	GL	BW	200	400	600	MCW	Milk
+2.6	+2.7	-4.4	+3.0	+23	+50	+56	+34	+13
47%	33%	47%	72%	59%	57%	60%	59%	48%
SS	DC	CW	EMA	Rib Fat	Rump	RBY %	IMF %	
+2.6	-5.3	+17	+2.9	+2.6	+3.4	+0.7	+0.1	
53%	32%	49%	46%	50%	50%	45%	48%	

**Comments:** The first of the Jupiter sons to be offered. They all display terrific depth and thickness across the top with a great backend. Nice shoulder and very low birthweight for heifer mating, he is a very well-made bull. Days to calving, scrotal, and fats are strong indicating fertility and this is reflected in an outstanding self-replacing index. Very sound and worth close inspection.

Purchaser:

Price: \$

# YEARLING ANGUS BULLS

## Lot: 75 MEADOWSLEA T412 <sup>PV</sup>

Birth Date: 30/09/22 ID No: 19134022412

MEADOWSLEA MEAT MACHINE G914 <sup>SV</sup>

MEADOWSLEA R818 <sup>PV</sup>

MEADOWSLEA N108

MEADOWSLEA P700 <sup>SV</sup>

MEADOWSLEA R615 <sup>PV</sup>

MEADOWSLEA P733 <sup>SV</sup>

INDEXES	
SR	HD
+\$125	+\$115

### SEPTEMBER 2023 TRANSTASMAN ANGUS CATTLE EVALUATION

CED	DTRS	GL	BW	200	400	600	MCW	Milk
+5.9	+0.8	-3.8	+3.9	+34	+68	+86	+62	+15
44%	29%	38%	70%	57%	55%	56%	54%	37%

SS	DC	CW	EMA	Rib Fat	Rump	RBY %	IMF %
+2.5	-4.3	+38	+2.8	+3.1	+3.6	+0.1	+0.8
47%	30%	46%	41%	45%	44%	41%	41%

**Comments:** Exciting prospect here - by R818 who was sold to Australia, and out of a cow by P700 who bred our top price bull this year. Lovely clean shoulder, exceptional length with good balance and style. Ideal heifer mating option with top calving ease and a low birthweight. Fats are in the top 10% and scrotal size is good too, giving another impressive SRI.

Purchaser:

Price: \$

## Lot: 76 MEADOWSLEA T377 <sup>PV</sup>

Birth Date: 27/09/22 ID No: 19134022377

TAIMATE LAZARUS L12 <sup>PV</sup>

MEADOWSLEA P565 <sup>SV</sup>

MEADOWSLEA G943

MEADOWSLEA M452

MEADOWSLEA Q460 <sup>PV</sup>

MEADOWSLEA K804

INDEXES	
SR	HD
+\$87	+\$114

### SEPTEMBER 2023 TRANSTASMAN ANGUS CATTLE EVALUATION

CED	DTRS	GL	BW	200	400	600	MCW	Milk
+5.0	+3.7	-5.6	+3.7	+35	+68	+96	+90	+14
50%	37%	53%	73%	62%	61%	62%	61%	48%

SS	DC	CW	EMA	Rib Fat	Rump	RBY %	IMF %
+2.1	-3.8	+41	+1.5	+0.9	+0.4	+0.1	+1.7
55%	35%	51%	51%	53%	52%	49%	51%

**Comments:** Nice clean-shouldered son of P565. Plenty of calving ease, short gestation, and good low birthweight followed by solid growth. Nice upstanding outlook, a well put together bull worth a close look. His actual EMA when corrected for weight was 7th best in the mob, and his IMF is strong too.

Purchaser:

Price: \$

# YEARLING ANGUS BULLS

**Lot: 77 MEADOWSLEA T516<sup>PV</sup>**

**Birth Date:** 13/10/22 **ID No:** 19134022516

GOLDWYN H817<sup>SV</sup>

**TURIROA PANTHER 18P241 (ET)<sup>PV</sup>**

TURIROA L120 (ET)

MEADOWSLEA L252

**MEADOWSLEA N251**

MEADOWSLEA L057

INDEXES	
SR	HD
+\$126	+\$87

## SEPTEMBER 2023 TRANSTASMAN ANGUS CATTLE EVALUATION

CED	DTRS	GL	BW	200	400	600	MCW	Milk
+0.4	+2.8	-5.1	+4.0	+35	+70	+82	+59	+14
49%	35%	52%	73%	62%	61%	62%	61%	48%
SS	DC	CW	EMA	Rib Fat	Rump	RBV %	IMF %	
+1.9	-4.5	+35	-1.6	+4.3	+5.2	-0.5	+0.2	
56%	34%	51%	49%	52%	51%	48%	49%	

**Comments:** Another very solid Panther son here. Dam is one of these L252 daughters who are breeding incredibly well - she is the mother of S582, sold at lot 47 this year and a real standout in the paddock. Moderate birthweight and short gestation with good growth. Very easy doing type with terrific rib and rump fats that rank in the top 5% of the breed. Strong across the loin with a good deep hindquarter.

**Purchaser:**

**Price:** \$

**Lot: 78 MEADOWSLEA T420<sup>PV</sup>**

**Birth Date:** 01/10/22 **ID No:** 19134022420

TURIROA MAVERICK L945 (ET)

**RANGATIRA REBEL 19-798<sup>SV</sup>**

RANGATIRA 15-134

MEADOWSLEA J432

**MEADOWSLEA L140**

MEADOWSLEA J628

INDEXES	
SR	HD
+\$100	+\$82

## SEPTEMBER 2023 TRANSTASMAN ANGUS CATTLE EVALUATION

CED	DTRS	GL	BW	200	400	600	MCW	Milk
-0.5	-2.0	-4.5	+4.3	+27	+60	+78	+67	+12
47%	32%	50%	72%	59%	57%	60%	58%	47%
SS	DC	CW	EMA	Rib Fat	Rump	RBV %	IMF %	
+2.4	-4.4	+27	-0.5	+0.8	+0.6	+0.7	-0.5	
51%	30%	48%	42%	46%	46%	42%	44%	

**Comments:** The first son of the \$35,000 Rangatira Rebel to be offered, showing the thickness and strength of bone that prefix was famous for. Moderate birthweight and growth with good clean shoulders, he is set to grow into a good big bull. Actual IMF was 6th best in the mob and he was 10th heaviest at weaning. Scrotal size EBV is strong too.

**Purchaser:**

**Price:** \$

# YEARLING ANGUS BULLS

## Lot: 79 MEADOWSLEA T608

Birth Date: 14/10/22 ID No: 19134022608

MEADOWSLEA N166 <sup>SV</sup>

MEADOWSLEA R700 <sup>PV</sup>

MEADOWSLEA J533

TURIROA 14830 (ET) <sup>SV</sup>

MEADOWSLEA N232

MEADOWSLEA K827

INDEXES	
SR	HD
+\$115	+\$84

### SEPTEMBER 2023 TRANSTASMAN ANGUS CATTLE EVALUATION

CED	DTRS	GL	BW	200	400	600	MCW	Milk
-1.9	-0.3	-4.5	+4.8	+39	+74	+93	+85	+16
43%	32%	43%	58%	56%	55%	57%	54%	45%
SS	DC	CW	EMA	Rib Fat	Rump	RBY %	IMF %	
+1.8	-5.1	+40	+1.4	+2.0	+2.2	+0.2	+0.4	
50%	33%	47%	45%	48%	48%	44%	45%	

**Comments:** A nice moderate birthweight bull with a good backline, plenty of length and stretch. Upstanding and well balanced with a great clean shoulder for heifer mating. Fat and milk EBVs are particularly strong and his days to calving fertility EBV is in the top 15%.

Purchaser:

Price: \$

## Lot: 80 MEADOWSLEA T327 <sup>PV</sup>

Birth Date: 23/09/22 ID No: 19134022327

MEADOWSLEA D227

MEADOWSLEA F540

MEADOWSLEA D042

MEADOWSLEA K924

MEADOWSLEA M1087

MEADOWSLEA K980

INDEXES	
SR	HD
+\$118	+\$102

### SEPTEMBER 2023 TRANSTASMAN ANGUS CATTLE EVALUATION

CED	DTRS	GL	BW	200	400	600	MCW	Milk
+2.7	-0.4	-6.0	+3.6	+34	+73	+93	+97	+16
55%	44%	58%	74%	65%	64%	65%	65%	59%
SS	DC	CW	EMA	Rib Fat	Rump	RBY %	IMF %	
+2.3	-6.0	+34	-0.3	+2.7	+2.6	-0.3	+1.6	
60%	49%	58%	57%	60%	59%	56%	58%	

**Comments:** Nice clean cut F540 son out of a cow going back to Crump, with low birthweight, short gestation, and calving ease. His days to calving figure ranks him in the top 5% of the breed while his fats and IMF figures are strong too. Great shoulders on him, a well-balanced stylish bull.

Purchaser:

Price: \$



# YEARLING ANGUS BULLS

## Lot: 81 MEADOWSLEA T230

Birth Date: 17/09/22 ID No: 19134022230

GLANWORTH WAIGROUP 0816 <sup>SV</sup>

MEADOWSLEA MEAT MACHINE G914 <sup>SV</sup>

MEADOWSLEA D101

MEADOWSLEA G917

MEADOWSLEA J576

MEADOWSLEA F555

INDEXES	
SR	HD
+\$120	+\$105

### SEPTEMBER 2023 TRANSTASMAN ANGUS CATTLE EVALUATION

CED	DTRS	GL	BW	200	400	600	MCW	Milk
+5.5	+0.0	-4.8	+3.6	+28	+52	+68	+29	+14
56%	43%	82%	75%	67%	66%	67%	66%	61%
SS	DC	CW	EMA	Rib Fat	Rump	RBY %	IMF %	
+2.3	-4.0	+31	+1.6	+2.5	+3.0	+0.9	-1.6	
62%	47%	58%	55%	57%	57%	54%	54%	

**Comments:** Direct Meat Machine son here with great figures for heifer mating. Had a full brother in the June 2023 2-year-old sale. Plenty of calving ease and low birthweight with strong fats. Scanned very well for IMF with the 3rd best actual in the group. Lovely clean shoulders, a lovely topline, and a strong hindquarter. A good heifer option.

Purchaser:

Price: \$

## Lot: 82 MEADOWSLEA T502

Birth Date: 11/10/22 ID No: 19134022502

MEADOWSLEA M429

MEADOWSLEA R646 <sup>PV</sup>

MEADOWSLEA M542

RATANUI LAD 21

MEADOWSLEA M1084

MEADOWSLEA 220

INDEXES	
SR	HD
+\$85	+\$98

### SEPTEMBER 2023 TRANSTASMAN ANGUS CATTLE EVALUATION

CED	DTRS	GL	BW	200	400	600	MCW	Milk
+1.8	+0.3	-2.9	+4.9	+33	+65	+87	+82	+13
48%	33%	51%	71%	59%	57%	59%	58%	47%
SS	DC	CW	EMA	Rib Fat	Rump	RBY %	IMF %	
+1.7	-2.7	+36	+2.1	+2.4	+3.0	+0.5	-0.1	
52%	32%	48%	44%	47%	47%	43%	44%	

**Comments:** A son of the top 2022 keeper R646. Nice backline about this one, nice length and stretch about him with good growth - had the heaviest weaning weight in the mob. Strong fats and good actual scan results. Good topline, clean shoulders, upstanding type.

Purchaser:

Price: \$

# YEARLING ANGUS BULLS

## Lot: 83 MEADOWSLEA T545

Birth Date: 27/10/22 ID No: 19134022545

TURIROA RAMBLE 11541 (ET)

TURIROA 14830 (ET) <sup>SV</sup>

TURIROA TULIP 459

MEADOWSLEA L342

MEADOWSLEA N503

MEADOWSLEA H152

INDEXES	
SR	HD
+\$80	+\$83

### SEPTEMBER 2023 TRANSTASMAN ANGUS CATTLE EVALUATION

CED	DTRS	GL	BW	200	400	600	MCW	Milk
-0.4	-1.6	-3.7	+4.0	+31	+58	+77	+68	+12
50%	37%	46%	73%	64%	63%	63%	62%	52%
SS	DC	CW	EMA	Rib Fat	Rump	RBV %	IMF %	
+2.1	-3.1	+28	+1.2	+1.0	+1.6	+0.2	+1.1	
56%	38%	53%	50%	53%	52%	49%	49%	

**Comments:** Nice moderate birthweight, clean-shouldered bull by Turiroa. He scanned exceptionally well for IMF with the 5th best actual marbling. Nice balance about his fellow, upstanding with a good hindquarter. Good square type worth a good look.

Purchaser:

Price: \$

## Lot: 84 MEADOWSLEA T162 <sup>PV</sup>

Birth Date: 14/09/22 ID No: 19134022162

RANGATIRA 13-38

MEADOWSLEA R650 <sup>PV</sup>

MEADOWSLEA H117

RANGATIRA 16209 <sup>SV</sup>

MEADOWSLEA Q245 <sup>PV</sup>

MEADOWSLEA L157

INDEXES	
SR	HD
+\$112	+\$106

### SEPTEMBER 2023 TRANSTASMAN ANGUS CATTLE EVALUATION

CED	DTRS	GL	BW	200	400	600	MCW	Milk
+5.1	+3.2	-5.8	+3.4	+31	+62	+76	+60	+17
46%	30%	52%	71%	58%	57%	58%	58%	43%
SS	DC	CW	EMA	Rib Fat	Rump	RBV %	IMF %	
+2.6	-4.4	+29	+2.1	+3.9	+4.5	-0.4	+1.5	
49%	31%	47%	44%	47%	46%	43%	43%	

**Comments:** Nice moderate framed, well-balanced bull with a good hindquarter. Is the first son of R650 offered for sale, who is a son of the \$100,000 Rangatira 13-38 out of the great cow H117. Out of a cow by Rangatira 209 which doubles up the thickness and strength of the Rangatira prefix. Grandmother bred a top bull at lot 3 in our 2023 June bull sale, sold to Corey Roulston for \$17,000. A stacked pedigree further back with Reality and Crump appearing. Great heifer mating figures with outstanding calving ease, short gestation, and low birthweight. Very easy doing type with fats the top 5%, strong scrotal and IMF.

Purchaser:

Price: \$

# YEARLING ANGUS BULLS

## Lot: 85 MEADOWSLEA T347

Birth Date: 24/09/22 ID No: 19134022347

RANGATIRA 16209 <sup>SV</sup>

MEADOWSLEA Q347 <sup>PV</sup>

MEADOWSLEA K944

MEADOWSLEA MEAT MACHINE G914 <sup>S</sup>

MEADOWSLEA K812

MEADOWSLEA B706

### INDEXES

SR

HD

+\$121

+\$98

### SEPTEMBER 2023 TRANSTASMAN ANGUS CATTLE EVALUATION

CED	DTRS	GL	BW	200	400	600	MCW	Milk
+2.9	-0.1	-1.5	+3.2	+29	+60	+76	+70	+14
49%	33%	81%	72%	60%	58%	60%	59%	47%
SS	DC	CW	EMA	Rib Fat	Rump	RBV %	IMF %	
+2.8	-5.2	+27	+1.3	+3.1	+3.6	+0.4	+0.0	
51%	34%	49%	44%	47%	46%	43%	43%	

**Comments:** Similar bloodline here, being a son of Q347 that was sold to Glen R Angus for \$32,000, and out of a Meat Machine cow who bred lot 69 sold to in the June bull sale as well as another top bull. Certainly bred to be thick, deep, and meaty! Nice clean shoulders for heifer mating, a deep-bodied compact type. Good low birthweight, strong scrotal and days to calving with outstanding fats.

Purchaser:

Price: \$

## Lot: 86 MEADOWSLEA T380 <sup>PV</sup>

Birth Date: 27/09/22 ID No: 19134022380

MEADOWSLEA MEAT MACHINE G914 <sup>SV</sup>

MEADOWSLEA K703 <sup>SV</sup>

MEADOWSLEA H126 <sup>SV</sup>

MEADOWSLEA M486

MEADOWSLEA P882 <sup>SV</sup>

MEADOWSLEA K931

### INDEXES

SR

HD

+\$143

+\$101

### SEPTEMBER 2023 TRANSTASMAN ANGUS CATTLE EVALUATION

CED	DTRS	GL	BW	200	400	600	MCW	Milk
+5.3	+4.3	-3.4	+1.5	+24	+48	+61	+26	+17
52%	38%	49%	75%	66%	65%	66%	65%	55%
SS	DC	CW	EMA	Rib Fat	Rump	RBV %	IMF %	
+2.6	-6.2	+20	+2.5	+4.9	+5.2	+0.3	-0.5	
58%	43%	56%	53%	56%	55%	52%	53%	

**Comments:** Super low birthweight here with terrific calving ease. A typical good, compact K703 son with exceptional easy doing rib and rump fats and a very high index, making him a great heifer mating option. Rib fat is in the top 1% of the breed, and the self-replacing index in the top 10%. Mother bred a top bull sold to Edward Harrington at lot 3 in the 2022 bull sale.

Purchaser:

Price: \$

WE'RE HERE TO  
HELP YOU TRADE.



**Rural Livestock**

# Looking for stock?

**With over 45 agents throughout the South Island, Rural Livestock can help you source the stock you need.**

**Talk to your local Rural Livestock agent  
and use our network to invest in the best.**

**Genetics Specialist:** Anthony Cox - **0272 083 071**

**Livestock Agents:**

Donald Cooke - **0274 730 854**

John Harrison - **0272 262 964**

Quinten Botha - **0274 730 885**

George Coull - **0272 181 371**

Aaron MCall - **0276 855 702**

**Rural Livestock helps you get the best outcome for your livestock trade.**



**Rural Livestock**

**0800 RURAL (787 255)  
www.rurallivestock.co.nz**

# YEARLING ANGUS BULLS

## Lot: 87 MEADOWSLEA T505

Birth Date: 11/10/22 ID No: 19134022505

WOODBANK 7017 <sup>SV</sup>

MEADOWSLEA R578 <sup>PV</sup>

MEADOWSLEA P651 <sup>SV</sup>

MEADOWSLEA L106

MEADOWSLEA P600 <sup>SV</sup>

MEADOWSLEA L186

INDEXES	
SR	HD
+\$115	+\$88

### SEPTEMBER 2023 TRANSTASMAN ANGUS CATTLE EVALUATION

CED	DTRS	GL	BW	200	400	600	MCW	Milk
-2.6	-1.5	-3.5	+5.8	+43	+82	+116	+116	+14
46%	30%	41%	71%	58%	56%	58%	57%	40%
SS	DC	CW	EMA	Rib Fat	Rump	RBY %	IMF %	
+3.3	-6.1	+50	-1.0	+1.8	+2.1	-0.1	+0.5	
48%	29%	47%	40%	44%	44%	40%	40%	

**Comments:** Another R578 son, the top Woodbank bull sold to Peak Hill. Thick, strong bull with plenty of growth in the top 15% of the breed. Excellent fertility with scrotal size in the top 10% and Days to Calving in the top 5%. Scanned with the 4th best rib fat and 3rd best actual IMF. Balance and style to him with plenty of length. Good quality.

Purchaser:

Price: \$

## Lot: 88 MEADOWSLEA T523

Birth Date: 14/10/22 ID No: 19134022523

RANGATIRA 13-38

MEADOWSLEA R650 <sup>PV</sup>

MEADOWSLEA H117

TURIROA 14830 (ET) <sup>SV</sup>

MEADOWSLEA Q423 <sup>PV</sup>

MEADOWSLEA J610

INDEXES	
SR	HD
+\$108	+\$92

### SEPTEMBER 2023 TRANSTASMAN ANGUS CATTLE EVALUATION

CED	DTRS	GL	BW	200	400	600	MCW	Milk
+1.3	+2.2	-4.2	+4.7	+34	+65	+83	+61	+12
47%	33%	51%	71%	59%	57%	58%	56%	45%
SS	DC	CW	EMA	Rib Fat	Rump	RBY %	IMF %	
+2.5	-3.6	+37	+0.7	+2.8	+3.7	-0.2	+0.6	
50%	32%	48%	45%	48%	47%	44%	44%	

**Comments:** Another of just a few bulls offered by R650, one of our 2022 keepers. Wonderful clean shoulders, good calving ease, moderate birthweight. Thick deep and square in a moderate frame and a good coat. Scrotal size and fats are very strong here.

Purchaser:

Price: \$

# YEARLING ANGUS BULLS

## Lot: 89 MEADOWSLEA T595

Birth Date: 07/11/22 ID No: 19134022595

GOLDWYN H817 <sup>SV</sup>

TURIROA PANTHER 18P241 (ET) <sup>PV</sup>

TURIROA L120 (ET)

GOLDWYN 017 <sup>SV</sup>

MEADOWSLEA N266

MEADOWSLEA K923

INDEXES	
SR	HD
+\$141	+\$82

### SEPTEMBER 2023 TRANSTASMAN ANGUS CATTLE EVALUATION

CED	DTRS	GL	BW	200	400	600	MCW	Milk
-2.1	+1.5	-4.8	+4.8	+40	+75	+92	+77	+14
50%	37%	54%	73%	62%	61%	62%	61%	50%
SS	DC	CW	EMA	Rib Fat	Rump	RBY %	IMF %	
+2.1	-5.9	+38	+0.4	+3.6	+4.3	-0.3	+0.9	
55%	37%	52%	50%	53%	52%	49%	51%	

**Comments:** Strong Panther son here, back to the Goldwyn bloodline. Mother bred a very thick bull sold at lot 44 in the June bull sale and sold to Mt Potts. Good thick, deep type, clean through the shoulders, with wonderful balance and style plus a very good index! Days to calving rib fat, and rump fat are all in the top 5% of the breed. This bull will develop!

Purchaser:

Price: \$

## Lot: 90 MEADOWSLEA T418 <sup>PV</sup>

Birth Date: 01/10/22 ID No: 19134022418

TURIHAUA CRUMP E5 (ET) <sup>SV</sup>

MEADOWSLEA N166 <sup>SV</sup>

MEADOWSLEA G922 <sup>SV</sup>

MEADOWSLEA F540

MEADOWSLEA K836

MEADOWSLEA F801

INDEXES	
SR	HD
+\$100	+\$94

### SEPTEMBER 2023 TRANSTASMAN ANGUS CATTLE EVALUATION

CED	DTRS	GL	BW	200	400	600	MCW	Milk
+0.5	+2.0	-4.8	+4.3	+34	+68	+94	+94	+17
53%	41%	56%	74%	66%	65%	66%	64%	56%
SS	DC	CW	EMA	Rib Fat	Rump	RBY %	IMF %	
+1.5	-5.3	+40	+1.2	+2.2	+1.4	+0.6	-0.3	
62%	44%	57%	56%	58%	58%	54%	57%	

**Comments:** Great pedigree here, by the great N166 and out of a cracking F540 cow, who was herself a daughter of the great embryo export cow F801. Moderate birthweight with strong growth, days to calving and fats, with a good actual IMF scan. Great head and bone, terrific topline, clean shoulders for heifer mating, nice balance, style, and outlook - a bull to watch later in the catalogue.

Purchaser:

Price: \$

# YEARLING ANGUS BULLS

**Lot: 91      MEADOWSLEA T239 <sup>PV</sup>**

**Birth Date:** 17/09/22      **ID No:** 19134022239

TURIHAUA CRUMP E5 (ET) <sup>SV</sup>

**MEADOWSLEA N166 <sup>SV</sup>**

MEADOWSLEA G922 <sup>SV</sup>

GOLDWYN 017 <sup>SV</sup>

**MEADOWSLEA Q362 <sup>PV</sup>**

MEADOWSLEA M580 <sup>SV</sup>

INDEXES	
SR	HD
<b>+\$103</b>	<b>+\$93</b>

## SEPTEMBER 2023 TRANSTASMAN ANGUS CATTLE EVALUATION

CED	DTRS	GL	BW	200	400	600	MCW	Milk
<b>+0.4</b>	<b>+2.0</b>	<b>-5.0</b>	<b>+3.8</b>	<b>+35</b>	<b>+68</b>	<b>+93</b>	<b>+84</b>	<b>+18</b>
50%	40%	54%	64%	63%	62%	62%	60%	51%
SS	DC	CW	EMA	Rib Fat	Rump	RBV %	IMF %	
<b>+1.4</b>	<b>-5.4</b>	<b>+37</b>	<b>+0.5</b>	<b>+2.3</b>	<b>+1.8</b>	<b>+0.1</b>	<b>+1.0</b>	
59%	42%	54%	54%	56%	56%	52%	55%	

**Comments:** Another good bull by N166 again, this time out of a Goldwyn 17 cow. Dam's first calf was sold to Piko Burn Angus at \$18,000, while great grand-dam D101 is the mother of Meat Machine himself. Nice moderate birthweight, clean shoulders, plenty of growth and strong IMF. Good fertility with days to calving in the top 10% for Angus in NZ and good rib fat.

**Purchaser:**

**Price: \$**

**Lot: 92      MEADOWSLEA T406 <sup>DV</sup>**

**Birth Date:** 02/10/22      **ID No:** 19134022406

MEADOWSLEA P674 <sup>SV</sup>

**MEADOWSLEA R619 <sup>PV</sup>**

MEADOWSLEA P777 <sup>SV</sup>

MEADOWSLEA N166 <sup>SV</sup>

**MEADOWSLEA Q168 <sup>PV</sup>**

MEADOWSLEA H108

INDEXES	
SR	HD
<b>+\$105</b>	<b>+\$101</b>

## SEPTEMBER 2023 TRANSTASMAN ANGUS CATTLE EVALUATION

CED	DTRS	GL	BW	200	400	600	MCW	Milk
<b>+2.9</b>	<b>+1.7</b>	<b>-4.6</b>	<b>+3.2</b>	<b>+35</b>	<b>+62</b>	<b>+84</b>	<b>+67</b>	<b>+16</b>
46%	30%	42%	71%	58%	56%	57%	57%	39%
SS	DC	CW	EMA	Rib Fat	Rump	RBV %	IMF %	
<b>+2.3</b>	<b>-4.4</b>	<b>+35</b>	<b>+2.3</b>	<b>+2.5</b>	<b>+2.5</b>	<b>+0.2</b>	<b>+0.9</b>	
50%	30%	46%	42%	45%	45%	41%	42%	

**Comments:** Another good heifer option with clean shoulders, low birthweight and calving ease. N166 appears as the sire of dam this time. Grand-dam H108 is our top marbling cow and this bull's actual IMF was strong along with his fat EBVs. Nice balance, good upstanding type.

**Purchaser:**

**Price: \$**

# YEARLING ANGUS BULLS

## Lot: 93 MEADOWSLEA T542

Birth Date: 27/10/22 ID No: 19134022542

TURIHAUA RHINO L159

TURIHAUA RHINestone P186 <sup>PV</sup>

TURIHAUA K175

MEADOWSLEA L153

MEADOWSLEA N159

MEADOWSLEA L323

INDEXES	
SR	HD
+\$106	+\$93

### SEPTEMBER 2023 TRANSTASMAN ANGUS CATTLE EVALUATION

CED	DTRS	GL	BW	200	400	600	MCW	Milk
+1.8	+2.7	-5.5	+4.1	+30	+62	+83	+83	+11
48%	34%	44%	73%	63%	62%	62%	61%	48%

SS	DC	CW	EMA	Rib Fat	Rump	RBY %	IMF %
+1.7	-5.0	+28	-2.2	+2.7	+3.6	-0.2	+0.5
56%	34%	51%	49%	52%	52%	48%	49%

**Comments:** Nicely balanced Rhinestone son with F540 and Goldwyn in the background. Mother bred a stud bull sold to Willowstone Angus in 2022. Clean shoulders, moderate birthweight, short gestation, and good calving ease with nice balance and style. Days to calving, rib and rump fat are all very good. Looks like he will really develop.

Purchaser:

Price: \$

## Lot: 94 MEADOWSLEA T539

Birth Date: 18/10/22 ID No: 19134022539

TURIHAUA CRUMP E5 (ET) <sup>SV</sup>

MEADOWSLEA N166 <sup>SV</sup>

MEADOWSLEA G922 <sup>SV</sup>

MEADOWSLEA M1016

MEADOWSLEA P681 <sup>SV</sup>

MEADOWSLEA M668

INDEXES	
SR	HD
+\$100	+\$79

### SEPTEMBER 2023 TRANSTASMAN ANGUS CATTLE EVALUATION

CED	DTRS	GL	BW	200	400	600	MCW	Milk
-3.2	+1.6	-4.0	+5.5	+39	+73	+97	+89	+17
49%	37%	52%	74%	64%	63%	65%	63%	51%

SS	DC	CW	EMA	Rib Fat	Rump	RBY %	IMF %
+1.7	-4.7	+43	+1.5	+2.7	+2.1	+0.4	-0.4
59%	41%	54%	54%	56%	56%	52%	54%

**Comments:** Another son of the powerful N166, showing good growth figures with thickness, depth, and length about him. Strong fats and short days to calving indicate fertility. Will grow into a big strong bull.

Purchaser:

Price: \$



# YEARLING ANGUS BULLS

## Lot: 95 MEADOWSLEA T464

Birth Date: 07/10/22 ID No: 19134022464

MEADOWSLEA M564 <sup>SV</sup>

MEADOWSLEA Q250 <sup>PV</sup>

MEADOWSLEA K710

RATANUI LAD 21

MEADOWSLEA N510

MEADOWSLEA E456

INDEXES	
SR	HD
+\$101	+\$94

### SEPTEMBER 2023 TRANSTASMAN ANGUS CATTLE EVALUATION

CED	DTRS	GL	BW	200	400	600	MCW	Milk
-0.1	-3.8	-4.1	+4.8	+37	+70	+96	+91	+13
47%	32%	42%	73%	60%	58%	61%	60%	45%

SS	DC	CW	EMA	Rib Fat	Rump	RBV %	IMF %
+2.2	-4.2	+37	+3.7	+2.6	+2.4	+0.2	+1.4
51%	34%	49%	44%	47%	47%	43%	43%

**Comments:** The first son offered by Q250, our 2021 keeper who has really come on and is breeding beautiful sound cattle with performance. Grandmother was a great old cow who bred a top bull sold to Stuart Millar. Moderate birthweight bull here, a nice square type with Q250's characteristic good feet and legs. Good muscle and scanned well for IMF. Nicely balanced bull.

Purchaser:

Price: \$

## Lot: 96 MEADOWSLEA T269

Birth Date: 20/09/22 ID No: 19134022269

RANGATIRA 16209 <sup>SV</sup>

MEADOWSLEA Q347 <sup>PV</sup>

MEADOWSLEA K944

GLANWORTH WAIGROUP 0816 <sup>SV</sup>

MEADOWSLEA G888

MEADOWSLEA D239

INDEXES	
SR	HD
+\$107	+\$93

### SEPTEMBER 2023 TRANSTASMAN ANGUS CATTLE EVALUATION

CED	DTRS	GL	BW	200	400	600	MCW	Milk
+2.4	+1.3	-3.8	+2.8	+28	+58	+75	+67	+16
52%	36%	81%	72%	60%	58%	60%	59%	49%

SS	DC	CW	EMA	Rib Fat	Rump	RBV %	IMF %
+2.2	-5.2	+29	+0.1	+3.0	+3.1	+0.1	+0.5
52%	35%	50%	45%	48%	48%	45%	45%

**Comments:** Super low birthweight bull here by Q347, the bull sold to Glen R Angus for \$32,000. Out of a great 10-year-old cow who bred very well. Moderate frame, deep thick and square type with a barrel and good backend. Fats and days to calving figures are strong once again.

Purchaser:

Price: \$

# YEARLING ANGUS BULLS

## Lot: 97 MEADOWSLEA T376 <sup>SV</sup>

Birth Date: 27/09/22 ID No: 19134022376

TURIROA RAMBLE 11541 (ET)

TURIROA 14830 (ET) <sup>SV</sup>

TURIROA TULIP 459

MEADOWSLEA L153

MEADOWSLEA N377

MEADOWSLEA L107

INDEXES	
SR	HD
+\$105	+\$82

### SEPTEMBER 2023 TRANSTASMAN ANGUS CATTLE EVALUATION

CED	DTRS	GL	BW	200	400	600	MCW	Milk
-2.5	-0.3	-3.5	+4.9	+37	+71	+94	+90	+13
50%	37%	47%	72%	61%	60%	61%	59%	50%

SS	DC	CW	EMA	Rib Fat	Rump	RBY %	IMF %
+2.1	-4.4	+38	+1.7	+1.2	+2.1	+0.4	+0.4
54%	37%	51%	48%	50%	49%	46%	48%

**Comments:** Lovely clean shoulders to this upstanding Turiroa son. Strong growth, nice balance and style with positive fats.

Purchaser:

Price: \$

## Lot: 98 MEADOWSLEA T572

Birth Date: 23/10/22 ID No: 19134022572

MEADOWSLEA P808 <sup>SV</sup>

MEADOWSLEA R890 <sup>PV</sup>

MEADOWSLEA P568 <sup>SV</sup>

WOODBANK 7017 <sup>SV</sup>

MEADOWSLEA R690 <sup>PV</sup>

MEADOWSLEA H126 <sup>SV</sup>

INDEXES	
SR	HD
+\$127	+\$101

### SEPTEMBER 2023 TRANSTASMAN ANGUS CATTLE EVALUATION

CED	DTRS	GL	BW	200	400	600	MCW	Milk
+2.6	+0.2	-3.4	+3.7	+34	+64	+86	+70	+15
47%	31%	42%	68%	56%	54%	56%	53%	37%

SS	DC	CW	EMA	Rib Fat	Rump	RBY %	IMF %
+2.2	-5.8	+33	+3.6	+3.9	+4.3	-0.6	+3.0
48%	29%	45%	40%	44%	43%	40%	40%

**Comments:** Clean shouldered heifer mating option here with low birthweight and positive calving ease followed by good strong growth. Scanned exceptionally well for EMA, the best in the catalogue despite not being the heaviest bull. Fats are in the top 5%, his IMF EBV is as well and scanned with the best marbling in the sale, coming through from the great marbling cows H108 and F530! Also has H126, the mother of K703 in his pedigree which may be where the EMA came from. Terrific carcase data here, was very late born and had some catching up to do - worth a close look!

Purchaser:

Price: \$

MEADOWSLEA  
ANGUS & SHEEP GENETICS

# YEARLING ANGUS BULLS

## Lot: 99 MEADOWSLEA T526

Birth Date: 14/10/22 ID No: 19134022526

TAIMATE LAZARUS L12 <sup>PV</sup>

MEADOWSLEA P565 <sup>SV</sup>

MEADOWSLEA G943

MEADOWSLEA F540

MEADOWSLEA N378

MEADOWSLEA H274

INDEXES	
SR	HD
+\$92	+\$111

### SEPTEMBER 2023 TRANSTASMAN ANGUS CATTLE EVALUATION

CED	DTRS	GL	BW	200	400	600	MCW	Milk
+4.9	+3.2	-6.3	+3.5	+36	+70	+93	+90	+17
52%	40%	56%	73%	63%	61%	62%	62%	52%

SS	DC	CW	EMA	Rib Fat	Rump	RBY %	IMF %
+2.2	-4.4	+40	+0.7	+2.1	+1.6	-0.4	+2.2
58%	39%	53%	52%	54%	54%	50%	53%

**Comments:** Great heifer mating figures here with this P565 son, out of an F540 cow. Had a full brother sold at lot 63 in 2023 winter sale to Flagstaff Station for \$10,500. Low birthweight followed by very strong growth with good fertility. Calving ease and short gestation numbers are also impressive. Easy doing type with strong IMF as well! A nicely balanced bull.

Purchaser:

Price: \$

## Lot: 100 MEADOWSLEA T527

Birth Date: 14/10/22 ID No: 19134022527

TURIHAUA RHINO L159

TURIHAUA RHINESTONE P186 <sup>PV</sup>

TURIHAUA K175

KAHARAU 07-558

MEADOWSLEA H172

MEADOWSLEA 116

INDEXES	
SR	HD
+\$102	+\$84

### SEPTEMBER 2023 TRANSTASMAN ANGUS CATTLE EVALUATION

CED	DTRS	GL	BW	200	400	600	MCW	Milk
+0.6	+0.7	-3.1	+4.3	+26	+54	+70	+74	+10
50%	36%	42%	74%	65%	64%	64%	63%	52%

SS	DC	CW	EMA	Rib Fat	Rump	RBY %	IMF %
+1.5	-4.6	+20	+0.4	+1.9	+2.5	+0.5	+0.0
58%	38%	54%	50%	53%	53%	49%	50%

**Comments:** A Rhinestone son here with moderate birthweight. Late born - actual EMA was second best when corrected for weight and his actual IMF was good too. Out of a good old cow who did her 10 years in our system. Sound type, well put together with nice balance and clean shoulders for heifer mating.

Purchaser:

Price: \$

# YEARLING ANGUS BULLS

## Lot: 101 MEADOWSLEA T476

Birth Date: 08/10/22 ID No: 19134022476

MEADOWSLEA MEAT MACHINE G914 <sup>SV</sup>

MEADOWSLEA K703 <sup>SV</sup>

MEADOWSLEA H126 <sup>SV</sup>

MEADOWSLEA F540

MEADOWSLEA K813

MEADOWSLEA E311

INDEXES	
SR	HD
+\$129	+\$96

### SEPTEMBER 2023 TRANSTASMAN ANGUS CATTLE EVALUATION

CED	DTRS	GL	BW	200	400	600	MCW	Milk
+2.0	-0.3	-2.4	+4.1	+32	+63	+79	+64	+17
55%	42%	55%	75%	66%	65%	66%	66%	60%

SS	DC	CW	EMA	Rib Fat	Rump	RBY %	IMF %
+1.6	-5.7	+32	+3.1	+4.2	+4.5	+0.1	+0.5
60%	46%	57%	56%	58%	57%	54%	55%

**Comments:** Nice moderate birthweight K703 son, again out of an F540 cow. Very strong in his rib and rump fats - in the top 5% - as well as good short days to calving which generates an impressive index. Length, stretch, and great clean shoulders for heifer mating.

Purchaser:

Price: \$

## Lot: 102 MEADOWSLEA T360 <sup>PV</sup>

Birth Date: 27/09/22 ID No: 19134022360

TAIMATE LAZARUS L12 <sup>PV</sup>

TIMPERLEA QUAIN 763 <sup>PV</sup>

TIMPERLEA NAERI 578 <sup>SV</sup>

MEADOWSLEA P514 <sup>SV</sup>

MEADOWSLEA R601 <sup>PV</sup>

MEADOWSLEA P506 <sup>SV</sup>

INDEXES	
SR	HD
+\$154	+\$111

### SEPTEMBER 2023 TRANSTASMAN ANGUS CATTLE EVALUATION

CED	DTRS	GL	BW	200	400	600	MCW	Milk
+5.9	+3.1	-4.4	+2.7	+37	+70	+80	+60	+10
47%	34%	53%	72%	60%	59%	59%	57%	44%

SS	DC	CW	EMA	Rib Fat	Rump	RBY %	IMF %
+1.9	-5.6	+37	+2.1	+2.6	+2.9	-0.2	+0.7
54%	31%	50%	49%	52%	52%	47%	50%

**Comments:** Super heifer mating figures to this Quain bull who leads this last pen of low birthweight bulls. Great calving ease, low birthweight, and a good balance of figures give an exceptional self-replacing index.

Purchaser:

Price: \$

# YEARLING ANGUS BULLS

## Lot: 103 MEADOWSLEA T195

Birth Date: 17/09/22 ID No: 19134022195

RANGATIRA 16209 <sup>SV</sup>

MEADOWSLEA Q347 <sup>PV</sup>

MEADOWSLEA K944

MEADOWSLEA F540

MEADOWSLEA J508

MEADOWSLEA F596

INDEXES	
SR	HD
+\$113	+\$110

### SEPTEMBER 2023 TRANSTASMAN ANGUS CATTLE EVALUATION

CED	DTRS	GL	BW	200	400	600	MCW	Milk
+5.7	+2.3	-5.7	+2.4	+29	+64	+81	+95	+15
51%	36%	82%	73%	61%	59%	61%	59%	50%

SS	DC	CW	EMA	Rib Fat	Rump	RBV %	IMF %
+2.9	-5.8	+25	+0.3	+2.5	+2.4	+0.1	+1.1
53%	36%	51%	46%	49%	49%	45%	46%

**Comments:** Great heifer mating figures again, with very low birthweight, short gestation, and great calving ease coming from the F540 bloodline. Very well bred with sire Q347 selling for \$32,000, while grand dam has produced three \$10,000 bulls. Nice figures here with great fertility indicated by strong scrotal EBV and days to calving in the top 5%, as well as good fats. A bull that should really develop.

Purchaser:

Price: \$

## Lot: 104 MEADOWSLEA T445

Birth Date: 06/10/22 ID No: 19134022445

TURIHAUA CRUMP E5 (ET) <sup>SV</sup>

MEADOWSLEA N166 <sup>SV</sup>

MEADOWSLEA G922 <sup>SV</sup>

MEADOWSLEA L240

MEADOWSLEA N499

MEADOWSLEA G950

INDEXES	
SR	HD
+\$106	+\$97

### SEPTEMBER 2023 TRANSTASMAN ANGUS CATTLE EVALUATION

CED	DTRS	GL	BW	200	400	600	MCW	Milk
+2.6	+3.0	-4.6	+2.9	+30	+59	+78	+76	+11
49%	37%	51%	74%	63%	62%	64%	62%	50%

SS	DC	CW	EMA	Rib Fat	Rump	RBV %	IMF %
+1.3	-4.4	+28	+1.6	+2.9	+2.5	+0.5	-0.1
59%	40%	53%	53%	55%	55%	51%	53%

**Comments:** Nicely balanced bull to finish on, a son of the top breeding N166, and out of an F540 granddaughter. Lovely clean shoulders, low birthweight, and calving ease. Rib fat in the top 10% of the breed. Nicely balanced bull and, as always, a good one to finish with!

Purchaser:

Price: \$

# The Meadowslea hill-country type

Visual appraisal is still very important for selecting cattle to perform in hill - country

**MASCULINE TRAITS - A strong head and jaw and thick neck indicate high levels of libido, testosterone and reproduction efficiency**

**NECK LENGTH - A thicker necked animal matures and reaches puberty earlier and has more libido**

A longer neck indicates a higher maintenance animal that is slower to reach puberty and re-breed

**HEART GIRTH - Large heart girth is an indicator of vigor and easy keeping ability**

Small heart girth animals are more susceptible to stress, are higher maintenance and do not perform well on tussock

**RIB FAT - Strong rib fat covers are the essential energy store for adverse conditions.**

They indicate easy-doing and finishing ability and are directly related to increased fertility in both heifers and cows.

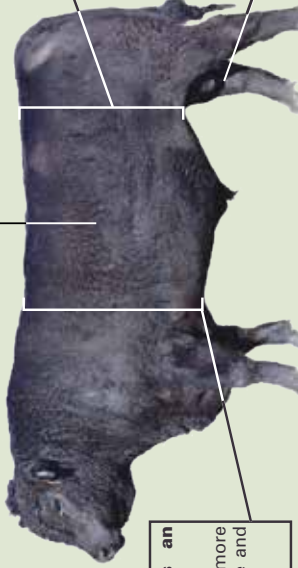
**STRUCTURAL SOUNDNESS, FEET AND BONE - High country cattle cover large distances over rugged terrain so a strong skeleton is essential**

**HIDE - a good thick skin and coat is essential in the cold harsh environment**

**FLANK - Deep flanked animals are easier keeping, have more meat in the rump and have more maternal and reproductive efficiency**

Higher flanked animals tend to be flighty, are higher maintenance and take longer to finish on grass

**SCROTAL SIZE - Larger scrotal size at 12 months indicates daughters will reach puberty earlier, be more fertile, and re-breed early every year.**



---

# NOTES

---

# 2 YEAR OLDS

TAG	LOT	TAG	LOT
151.....	5	334.....	17
155.....	13	338.....	3
200.....	28	357.....	12
208.....	31	392.....	2
217.....	27	395.....	11
222.....	4	403.....	32
226.....	21	427.....	23
238.....	7	457.....	30
240.....	9	461.....	26
241.....	10	462.....	19
246.....	29	480.....	15
273.....	8	498.....	25
300.....	24	516.....	6
313.....	16	521.....	1
328.....	18	545.....	22
333.....	20	577.....	14



# YEARLINGS

TAG	LOT	TAG	LOT
124.....	35	380.....	86
128.....	54	402.....	68
133.....	34	403.....	59
138.....	44	406.....	92
147.....	56	412.....	75
160.....	47	415.....	45
161.....	36	418.....	90
162.....	84	420.....	78
163.....	37	423.....	61
190.....	43	443.....	50
192.....	60	445.....	104
195.....	103	452.....	52
221.....	67	459.....	41
230.....	81	464.....	95
236.....	53	472.....	55
239.....	91	476.....	101
251.....	49	482.....	63
259.....	57	493.....	64
269.....	96	494.....	74
282.....	40	502.....	82
283.....	33	503.....	71
293.....	38	505.....	87
295.....	69	516.....	77
299.....	66	523.....	88
307.....	62	526.....	99
326.....	39	527.....	100
327.....	80	539.....	94
332.....	42	542.....	93
335.....	72	545.....	83
339.....	48	564.....	70
347.....	85	572.....	98
356.....	51	575.....	46
357.....	73	595.....	89
360.....	102	607.....	65
376.....	97	608.....	79
377.....	76	609.....	58



High Survival, High Performance Runnys



1/2 Romney x 1/2 Perendale (Brendale)  
1/2 Romney x 1/4 Perendale x 1/4 Texel



1/2 Romney x 1/2 Texel  
3/4 Romney x 1/4 Texel



100% Romney 1/2 100% R 1/2 Romney



100% Terminal Tough Full Blood Ram



100% Maternal 100% great Maternal



**MEADOWSLEA**  
ANGUS & SHEEP GENETICS



30 YEARS UNSHEPHERDED ON HILL-COUNTRY

# RAM SALE

## 300 RAMS

Thursday November 30th 12:30pm

Helmsman Auction

On-farm and Online through [yourbid](http://yourbid.co.nz)

Register NOW at [www.meadowslea.co.nz](http://www.meadowslea.co.nz)

**to win a \$2000 Ram!**

David Giddings 027 2299760

George Giddings 027 656 3323

[giddingsfamily@xtra.co.nz](mailto:giddingsfamily@xtra.co.nz)



# FMG Premier Bull Sale Insurance

## **What is FMG Premier Bull Insurance?**

FMG provides automatic insurance for all bulls auctioned at an FMG Premier Bull Sale up to the value of \$50,000 for 14 days at no cost to the purchaser. For any bull purchased over \$50,000 talk to an FMG representative.

## **What is the length of cover?**

You will automatically be insured for the specified bull for 14 days. You also have the option to extend the length of insurance to 12 months. Simply tick the “Extend your Premier Bull Insurance” option on the Purchaser Slip. The specified bull is then insured for the remaining period of 12 months at 6.5% of the purchase price. If you would like to discuss an alternative timeframe, please have a chat with your local FMG representative.

You don't have to pay today, FMG will invoice you for this additional cover.

04/23 INHD



Call us on  
0800 366 466



Visit our website  
[fmg.co.nz](http://fmg.co.nz)

## What are the benefits?

✓ <b><i>Infertility</i></b>	Cover if your specified bull has to be euthanised due to permanent infertility caused by certain accidents, disease, or illness.
✓ <b><i>Theft or death</i></b>	We cover your specified bull for theft or death caused by certain accidents, disease, or illness (including while in transit anywhere in New Zealand).
✓ <b><i>Vet costs</i></b>	We cover up to \$500 for treatment of your specified bull to prevent death.

## What will FMG pay?

FMG will pay the fair market value of your specified bull, less any amount you receive for the sale of the carcass, up to the amount shown on the insurance certificate.

04/23 INHD



Call us on  
0800 366 466



Visit our website  
[fmg.co.nz](https://fmg.co.nz)

# MEADOWSLEA SPRING ANGUS BULL SALE

## PURCHASER'S INSTRUCTION SLIP

(To be handed into the Auctioneers before leaving sale)

Name:.....

Address: .....

.....

Telephone:..... NAIT no.# .....

Email: .....

### Purchases:

Lot No:..... \$..... Lot No.....\$ .....

Lot No:..... \$..... Lot No.....\$ .....

Lot No:..... \$..... Lot No.....\$ .....

Lot No:..... \$..... Lot No.....\$ .....

Lot No:..... \$..... Lot No.....\$ .....

Lot No:..... \$..... Lot No.....\$ .....

Lot No:..... \$..... Lot No.....\$ .....

Lot No:..... \$..... Lot No.....\$ .....

Lot No:..... \$..... Lot No.....\$ .....

Lot No:..... \$..... Lot No.....\$ .....

Transport Company.....

Account to: .....

### FMG Insurance Cover

- ☒ 14 days - FMG Premium Bull cover (at no charge)
- ☐ Extend cover to 12 months - FMG Premium Bull cover

*Please select your preferred payment method:*

- ☐ FMG direct
- ☐ Farmlands
- ☐ Ruralco

Deliver to:.....

Signature of Purchaser: .....

Date:.....

NO VERBAL INSTRUCTIONS CAN BE ACCEPTED



# OUR EXCITING NEW SIRE Purchased May 2022, \$81,000



## Kincardine Rainstorme R25

SEPTEMBER 2023 TRANSTASMAN ANGUS CATTLE EVALUATION										
CED	DTRS	GL	BW	200	400	600	MCW	Milk		
<b>+9.8</b>	<b>+7.3</b>	<b>-7.7</b>	<b>+2.4</b>	<b>+45</b>	<b>+81</b>	<b>+92</b>	<b>+37</b>	<b>+28</b>		
54%	45%	79%	74%	72%	72%	73%	70%	65%		
SS	DC	CW	EMA	Rib Fat	Rump	RBV %	IMF %			
<b>+4.2</b>	<b>-4.5</b>	<b>+51</b>	<b>+9.2</b>	<b>+1.5</b>	<b>+1.3</b>	<b>+0.9</b>	<b>+0.3</b>			
73%	38%	67%	64%	69%	65%	66%	64%			

- Beautifully balanced young sire with almost perfect structural assessment
- Exceptional data for efficient, sustainable beef production in hill-country
- Ticks all the boxes for minimal environmental impact
- Semen available priced differently for stud breeders or commercial farmers

# WE'LL BACK YOUR BULL

Meadowslea will  
cover your interest  
for 6 months in the  
way of a cashback\*



**SIGN UP  
PRESALE**

You must be signed up  
presale to take advantage  
of this outstanding offer

\*TERMS AND CONDITIONS APPLY



FREEPHONE  
**0800 223 070**