

# MEADOWSLEA ANGUS SPRING BULL SALE



MEADOWSLEA  
ANGUS & SHEEP GENETICS



**32 2-year bulls**

**58 yearling bulls**

**On-Farm Helmsman Auction  
Friday 9th October 2020 1pm**

*and*

**Online at**

**[www.meadowslea.co.nz](http://www.meadowslea.co.nz)**

**from Sunday October 4th**



**yourbid**

# The Meadowslea hill-country type

Visual appraisal is still very important for selecting cattle to perform in hill - country

**MASCULINE TRAITS - A strong head and jaw and thick neck indicate high levels of libido, testosterone and reproduction efficiency**

**NECK LENGTH - A thicker necked animal matures and reaches puberty earlier and has more libido**

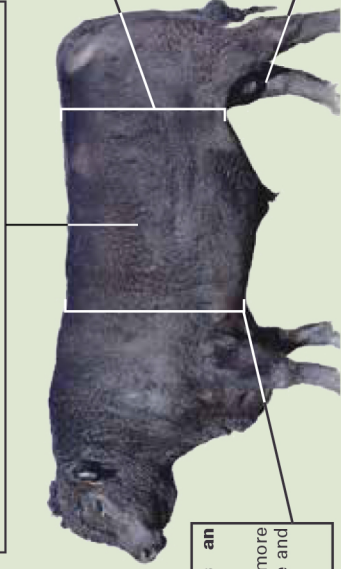
A longer neck indicates a higher maintenance animal that is slower to reach puberty and re-breed

**HEART GIRTH - Large heart girth is an indicator of vigor and easy keeping ability**

Small heart girth animals are more susceptible to stress, are higher maintenance and do not perform well on tussock

**RIB FAT - Strong rib fat covers are the essential energy store for adverse conditions.**

They indicate easy-doing and finishing ability and are directly related to increased fertility in both heifers and cows.



**STRUCTURAL SOUNDNESS, FEET AND BONE - High country cattle cover large distances over rugged terrain so a strong skeleton is essential**

**HIDE - a good thick skin and coat is essential in the cold harsh environment**

**FLANK - Deep flanked animals are easier keeping, have more meat in the rump and have more maternal and reproductive efficiency**

Higher flanked animals tend to be flighty, are higher maintenance and take longer to finish on grass

**SCROTAL SIZE - Larger scrotal size at 12 months indicates daughters will reach puberty earlier, be more fertile, and re-breed early every year.**

# FRIDAY 9th OCTOBER 2020, 1pm, Mt Cook Rd, Fairlie

## VENDOR:

### Mr David S Giddings

Phone: 03 685 8027  
Mobile: 027 229 9760  
Email: giddingsfamily@xtra.co.nz

## PARTICIPATING COMPANIES:

### PGG Wrightson:

John McCone 027 229 9375  
Simon Eddington 027 590 8612  
Callum McDonald 027 433 6443  
Joe Higgins 027 431 4041  
Greg Uren 027 431 4051  
Sam Bell 027 204 0499  
Bruce Dunbar 027 595 6473  
Barry Fox (Dairy) 027 439 3317

### Peter Walsh & Associates:

Madison Taylor 021 656 851  
Hamish Zuppich 027 403 3025  
Snow Buckley 027 561 4652  
Don Borlase (Dairy) 027 561 4025  
Dean Cox (Dairy) 027 561 5007  
Greg Shearer (Fairlie) 027 476 6769

### Rural Livestock:

Anthony Cox	Stud Stock	0272 083 071
Simon Cox	Livestock Manager	0272 097 665
Cody Clark	Canterbury	0274 730 802
Quinten Botha	South Canterbury	0274 730 885
Fraser Adams	South Canterbury	0274 730 823
Mick Withers (Dairy)	Canterbury	0274 730 817
Richard Leech (Dairy)	Canterbury	0276 918 442

### Carrfields Livestock:

Callum Dunnett 027 587 0131  
Roger Keach 027 417 8641  
Andrew Holt 027 496 3311

### Hazlett Rural:

Andrew Scarlett 027 462 0126  
Guy Martin 027 538 3741

**TB Status - C10**

## ATTENTION ON-FARM BUYERS:

Can you please ensure you bring your NAIT Number to the sale

# MEADOWSLEA SPRING BULL SALE



Friday 9th October 2020 1pm

**Online and On-Farm,  
State Highway 8, 5km west of Fairlie**

**Bull Walk Open Day**

**Thursday October 1st, 11am - 3pm**

**Online Bidding opens with  
Video Release Sunday 4th 7pm**

## **Sale Format**

The sale will be conducted as a Helmsman-style auction, meaning that all lots are for sale simultaneously. This is to allow for the participation of those in attendance, as well as those online. The sale will be hosted on our own **yourbid** platform and accessed through our website [www.meadowslea.co.nz](http://www.meadowslea.co.nz) Prior to the sale, all lots will be filmed and available for viewing up until sale day on the Meadowslea website.

**Bulls are available for viewing in the paddock anytime** – just call 0272299760 to arrange a time.

**Registration for those in attendance** will be at the on-farm office, where a copy of the conditions of sale will be posted. **Registration for those online** will be through the Meadowslea website, where the conditions of sale will also be available. **Buyers** will receive a buyer number as they register which will accompany each bid. Buyers registering online will receive a buyer number in their email which will automatically accompany each bid they place, whether they do so at home on their computer, or through their smart phone while in attendance. Those in attendance may also bid by writing on the supplied bidding cards and handing them in to the auctioneers. All live bids and all lots will be visible at all times, both online and on a big screen on-farm.

**Online registration is available NOW** and we encourage everyone to visit our website [www.meadowslea.co.nz](http://www.meadowslea.co.nz), to register, and then place practice bids on the demonstration lots on the auction page.

**The Online Open Day video** will be released on our website and on facebook on Sunday Oct 4th at 7pm. This video will include footage of every bull in the catalogue with expert comments from genetic



specialists and will be available for viewing right up until the sale. **Online bidding** will be open from 7pm on Sunday Oct 4th until the conclusion of the sale.

**On Oct 4th**, Sale day, the on-farm registration and bidding will open at 11am. **Livestreaming with interactive viewing will commence at 12.30 am** with a walk through of all the pens with commentary from the vendors and genetic specialists. Requests to review particular bulls can be made through the comments section of the web-site chat room or by telephone or text to the vendors or stock agents in attendance. This will continue throughout until the conclusion of the sale.

**A live screen on the website** will show all lots alongside their current prices and the buyer number of the bidder who holds that lot. On-farm attendees will be able to view on a big screen on site. Bids will be displayed on a computer or smart phone screen in the following colours

**Example:**

**\$2500** Displayed in red denotes the Vendors reserve and indicates there has been no bid.

**\$3000** Displayed in blue means an active bid has been received

**\$3500** Orange highlight indicates a new bid has been received within the last 2 minutes on this lot.

**\$3500** The holder of the leading bid will have the lot number highlighted in green on their computer or their smart phone.

**The sale will run until 2pm on Oct 9th.** After this time the sale will conclude once there has been a period of at least 2 minutes without a bid being received on any lot. If another bid is placed on any lot during the 2-minute period, then time is extended and bids can be received on all lots for a further 2 minutes. This process will be repeated until a clear 2 minutes passes without any bids on any lot at which time the sale will conclude.

**Final Time** will be called clearly by the commentary team who will use their discretion to ensure all bidders are satisfied.

All updates will be posted on our website, as will an up-to-date version of this document.

**Rebate purchasing Commission.** There will be no booking company in attendance and all purchasing companies will be responsible for booking of their own client's purchases

For this Sale we will trial a 2-Tiered Purchaser Rebate commission structure for all participating companies.

1. 9% rebate commission paid to the nominated buying company, provided the vendor is advised of the purchaser's intention to buy prior to the commencement of the on-farm sale, or before the purchaser commences bidding online.
2. 3% rebate commission paid to the nominated buying company when the vendor has **NOT** been advised of the purchaser's intention to buy prior to the commencement of the on-farm sale, or before the purchaser commences bidding online.

---

# FOREWORD

---

Meadowslea Angus Stud was established in 1985 with the purchase of capital stock females from Turihaua Station, Gisborne.

The herd today comprises 450 cows run on tussock country west of Fairlie at an altitude of 1500 to 2500 feet. The cows are run entirely under commercial conditions with all heifers calving as 2-year-olds or they are culled. Strong emphasis is placed on cow fertility and ease of calving with any dry cows culled.

Selection criteria is for easy-fleshing, moderate-framed cattle with plenty of meat and adequate fat cover, that will shift and perform in the South Island hill country. Sires used are all NZ-bred, with real emphasis placed on structural soundness, longevity, and fat cover. Over the last 12 years our stud cows have grazed next door on "Berkley Downs" native tussock blocks, and this has further tested their hardiness and constitution.

Sale bulls have spent 120 days on winter feed. The yearlings have been on fodderbeet where they have gained over 1kg /day while the 2-year bulls cruised through the winter on kale. Both mobs were shifted onto grass in the second week of September.

In 2018 we had 190 stud heifers born and after losing 2 over the winter we mated all 188 on hand. We had an outstanding conception rate with only 2 empties. We believe it is the strong focus that we place on the maternal and fertility traits that is driving these outstanding results. Furthermore, the performance of our young R2-year heifers is leading the progress within the herd, and you will note that many of the bulls on offer are bred from these outstanding young cattle – either out of the 2-year heifers or bred by yearling bulls.

Strong maternal and fertility traits are the main driver of profitability in any beef herd, and they continue to be the major selection criteria in our breeding programme.

We always keep a selection of very good 2-year-old Angus bulls for this spring sale and this year is no exception, with some particularly meaty, easy-doing bulls on offer, many suited to heifer mating.

The yearlings include some top picks which will develop in to very good herd sires and there is a very good selection of low birth weight bulls suitable for heifer mating.

**Meadowslea is a closed herd. All appropriate steps are being taken to ensure biosecurity is maintained at all times for ourselves and our clients.**

All bulls tested clear and vaccinated for BVD.

Scrotal contents and prepuce palpated with no abnormalities found.

We wish you well with your purchases and as always stand behind them 100%.

*David Giddings*

## **The Meadowslea Double - Diamond Brand of Quality**

The Meadowslea Double Diamond brand is displayed on the 2-year bulls that are covered by our 3 year comprehensive guarantee and recommended for beef breeding herds.



## 2020 TRANSTASMAN ANGUS CATTLE EVALUATION AVERAGE EBVS

CED	DTRS	GL	BW	200	400	600	MCW	Milk
<b>+1.6</b>	<b>+1.9</b>	<b>-4.3</b>	<b>+4.3</b>	<b>+46</b>	<b>+83</b>	<b>+109</b>	<b>+95</b>	<b>+16</b>

SS	DC	CW	EMA	Rib Fat	Rump	RBY (%)	IMF%
<b>+1.9</b>	<b>-4.3</b>	<b>+60</b>	<b>+5.3</b>	<b>+0.0</b>	<b>-0.2</b>	<b>+0.4</b>	<b>+1.7</b>

INDEXES	
SR	HD
<b>+\$100</b>	<b>+\$100</b>

# Downlands Deer

## & *STUDSTOCK*

**DEDICATED TO WORKING AS A TEAM**



**CONTACT: KRIS ORANGE**  
**TELEPHONE 03 693 8013**  
**MOBILE 021 322 622**

*W3 Stud Stock Specialists*

## September 2020 NZ Angus TACE Percentile Bands for all 2018 - born animals

	Calv-Ease			Birth			Growth					Fert		Carcase					Index	
	Dir	Dtrs	GL	Bwt	200	400	600	Mwt	Milk	SS	DC	Cwt	EMA	Rib	P8	RBY	IMF	SRI	HD	
	%	%	days	days	kg	kg	kg	kg	kg	cm	days	kg	sq.cm	mm	mm	%	%	\$	\$	
Top 1%	+12.3	+10.8	-10.0	+0.2	+63	+112	+150	+147	+26	+4.1	-9.2	+87	+11.4	+3.2	+3.3	+2.6	+4.2	+164	+142	
Top 5%	+9.9	+8.7	-8.1	+1.5	+58	+103	+137	+130	+23	+3.3	-7.9	+79	+9.3	+2.2	+2.1	+1.9	+3.5	+146	+133	
Top 10%	+8.5	+7.4	-7.2	+2.2	+55	+98	+130	+121	+22	+3.0	-7.1	+75	+8.3	+1.6	+1.6	+3.1	+3.1	+136	+128	
Top 20%	+6.5	+5.8	-6.1	+2.9	+52	+93	+123	+112	+20	+2.6	-6.2	+70	+7.2	+1.1	+0.9	+1.2	+2.6	+125	+120	
Top 30%	+5.0	+4.5	-5.4	+3.4	+50	+89	+117	+105	+18	+2.3	-5.5	+67	+6.4	+0.7	+0.5	+0.9	+2.2	+116	+113	
Top 40%	+3.5	+3.4	-4.8	+3.9	+48	+86	+113	+100	+17	+2.0	-4.9	+64	+5.8	+0.3	+0.2	+0.6	+2.0	+108	+107	
<b>Top 50%</b>	+2.1	+2.3	-4.2	+4.3	+46	+83	+109	+95	+16	+1.8	-4.4	+61	+5.2	+0.0	-0.2	+0.4	+1.7	+101	+101	
Top 60%	+0.6	+1.1	-3.7	+4.7	+44	+80	+105	+90	+15	+1.6	-3.9	+58	+4.6	-0.3	-0.5	+0.2	+1.5	+94	+95	
Top 70%	-1.0	-0.2	-3.1	+5.1	+42	+77	+100	+85	+14	+1.4	-3.3	+55	+4.0	-0.6	-0.9	+0.0	+1.2	+85	+89	
Top 80%	-3.0	-1.8	-2.4	+5.6	+39	+73	+94	+78	+12	+1.2	-2.6	+50	+3.3	-1.0	-1.3	-0.3	+0.9	+75	+82	
Top 90%	-5.8	-4.1	-1.5	+6.3	+35	+67	+86	+69	+10	+0.8	-1.5	+43	+2.3	-1.5	-2.0	-0.7	+0.5	+62	+72	
Top 95%	-8.3	-6.0	-0.6	+7.0	+32	+62	+79	+61	+9	+0.5	-0.4	+37	+1.4	-2.0	-2.6	-1.1	+0.1	+52	+64	
Top 99%	-13.5	-9.9	+1.4	+8.2	+25	+52	+64	+44	+6	-0.2	+1.7	+26	-0.1	-2.9	-3.7	-1.9	-0.4	+34	+47	

Based on the results of the September 2020 Angus Group TACE analysis



16th September 2020

On the 16th September 2020

I palpated the scrotal contents and prepuce of the bulls.

There were no abnormalities found.

The scrotal circumferences were measured and recorded.

Glenda Kellahan (B.V.Sc.)

**Accounts Office**

Ph: 03 687 9381

Fax: 03 687 9380

Email: [office@orangivet.co.nz](mailto:office@orangivet.co.nz)

PO Box 4013,

Highfield, Timaru

**Geraldine**

**Veterinary Centre**

T.M. Colson B.V.Sc.

M.G. Catherwood B.V.Sc.

G.K. Kellahan B.V.Sc.

A.D. McCullough B.V.Sc

27 Wilson Street, Geraldine

Ph: 03 693 1163

Fax: 03 693 1161

**Fairlie**

**Veterinary Centre**

Allandale Road, Fairlie

PO Box 26, Fairlie

Ph: 03 685 8407

Fax: 03 685 8904

**Highfield**

**Veterinary Centre**

B.M. Gregor B.V.Sc.

G.A. Gregor V.S.

S.R. Newmarch B.Sc, B.V.Sc.

265 Otipua Road, Timaru

PO Box 4013, Highfield

Timaru

Ph: 03 684 5646

Fax: 03 688 4397

## Aorangi Vets - Fairlie

*"Your Animals Our Expertise"*

Your first choice of vets in the Mackenzie District for all  
your animal health requirements.

Phone 03 685-8407

# 2 YEAR OLD ANGUS BULLS

## Lot: 1 MEADOWSLEA P514

Birth Date: 31/08/18 ID No: 19134018514

MEADOWSLEA MEAT MACHINE G914



**MEADOWSLEA M495**

MEADOWSLEA E350

RATANUI LAD 21

**MEADOWSLEA M621**

MEADOWSLEA G1038

INDEXES	
SR	HD
+\$116	+\$101

### 2020 TRANSTASMAN ANGUS CATTLE EVALUATION EBVS

CED	DTRS	GL	BW	200	400	600	MCW	Milk
<b>+4.7</b>	<b>-0.9</b>	<b>-4.3</b>	<b>+3.4</b>	<b>+30</b>	<b>+59</b>	<b>+75</b>	<b>+77</b>	<b>+12</b>
48%	32%	36%	71%	65%	66%	70%	64%	45%

SS	DC	CW	EMA	Rib Fat	Rump	RBY %	IMF %
<b>+1.8</b>	<b>-5.8</b>	<b>+28</b>	<b>+5.7</b>	<b>+3.4</b>	<b>+3.6</b>	<b>+0.1</b>	<b>-0.5</b>
69%	35%	54%	54%	55%	56%	50%	47%

**Comments:** To kick off our 2020 spring sale we have selected a bull that exemplifies our breeding programme. P514 was used as a yearling to mate stud heifers and is himself sired by a yearling bull and out of a 2-year heifer. His sire M495 bred very well for us with 2 of his sons featuring of our winter bull sale at lots 4 and 6. P514 is ideal for mating heifers with very good calving ease, low birth weight and a nice clean shoulder. Being a grandson the Meat Machine G914 it is no surprise he scanned exceptionally well, with the second biggest EMA and top rib fat of the group, giving him rib and rump figures in the top 1% of the breed. A great pick for either heifers or cows.

<b>Purchaser:</b>	<b>Price: \$</b>
-------------------	------------------

## Lot: 2 MEADOWSLEA P537

Birth Date: 07/09/18 ID No: 19134018537

MEADOWSLEA MEAT MACHINE G914



**MEADOWSLEA M504**

MEADOWSLEA H146

MEADOWSLEA K886

**MEADOWSLEA M411**

MEADOWSLEA K813

INDEXES	
SR	HD
+\$107	+\$105

### 2020 TRANSTASMAN ANGUS CATTLE EVALUATION EBVS

CED	DTRS	GL	BW	200	400	600	MCW	Milk
<b>+5.4</b>	<b>-0.3</b>	<b>-4.9</b>	<b>+2.9</b>	<b>+29</b>	<b>+65</b>	<b>+82</b>	<b>+77</b>	<b>+20</b>
47%	33%	38%	70%	64%	65%	69%	63%	43%

SS	DC	CW	EMA	Rib Fat	Rump	RBY %	IMF %
<b>+0.9</b>	<b>-6.7</b>	<b>+32</b>	<b>+3.8</b>	<b>+0.7</b>	<b>+0.7</b>	<b>+0.5</b>	<b>-0.6</b>
67%	35%	53%	52%	53%	55%	49%	45%

**Comments:** Here is a grandson of the Meat Machine bull. Sired by a top yearling who was sold to Matt Mackenzie in the 2018 sale at lot 13 for \$15,500, once again proving how our young genetics are leading the way. P537 is out of a 2-year heifer going back to both F540 and Crump. He has a nice low birthweight with plenty of calving ease, short days to calving and a very strong milk figure. He exhibits great muscle and fats and shows all that depth, thickness, and easy doing ability we love from the Meat Machine blood line. Another great heifer mating option to put on your list!

<b>Purchaser:</b>	<b>Price: \$</b>
-------------------	------------------

# DEFER-A-BULL

## Secure your bull team with no upfront cost

Talk to us about a Defer-A-Bull purchase agreement. We'll help you secure your bull team early with a deferred payment date that works best for you.

- No upfront cost
- No repayments until bulls are sold
- Secure as many bulls as you need
- Get expert support and advice from your local dairy specialist.

**To find out more head to: [pggwrightson.co.nz/deferabull](http://pggwrightson.co.nz/deferabull)  
or call 0800 10 22 76**



### Contact your local representative.

**Simon Eddington**

Genetics Representative  
Ashburton  
0275 908 612

**John McKone**

Auctioneer  
Amberley  
0272 299 375

**Joe Higgins**

Livestock Manager  
Timaru  
0274 314 041

**Greg Uren**

Livestock Representative  
Temuka  
0274 314 051

**Bruce Dunbar**

Livestock Representative  
Fairlie  
0275956473

**Matt Gibbs**

Livestock Representative  
Fairlie  
0275 552 307

**Sam Bell**

Livestock Representative  
Fairlie  
0272 040 499

**Barry Fox**

Livestock Representative  
Oamaru  
0274 393 317

**Andy Cunningham**

Livestock Representative  
Geraldine  
0275 668 243

**Neil Carter**

Livestock Representative  
Waimate  
0272 821 104

**Victor Schikker**

Livestock Representative  
Ashburton  
0275 908 061

**James Hamilton**

Livestock Representative  
Ashburton  
0274 770 551

**Callum McDonald**

Livestock Representative  
Invercargill  
0274 336 443



# 2 YEAR OLD ANGUS BULLS

## Lot: 3 MEADOWSLEA P576

Birth Date: 13/09/18 ID No: 19134018576

RANGATIRA 13-38



**MEADOWSLEA M444**

MEADOWSLEA H134

MEADOWSLEA F540

**MEADOWSLEA H134**

MEADOWSLEA F731

INDEXES	
SR	HD
+\$87	+\$86

### 2020 TRANSTASMAN ANGUS CATTLE EVALUATION EBVS

CED	DTRS	GL	BW	200	400	600	MCW	Milk
-0.5	-3.2	-5.0	+4.6	+32	+67	+84	+81	+19
53%	40%	59%	76%	70%	71%	75%	69%	54%
SS	DC	CW	EMA	Rib Fat	Rump	RBY %	IMF %	
+2.0	-4.9	+33	+2.6	+1.3	+1.6	-0.2	+0.6	
73%	43%	60%	60%	61%	62%	56%	53%	

**Comments:** Here is an exceptionally deep, thick bull that is sure to take the eye. By a yearling bull once again, who was a son of the \$100,000 Rangatira sire 13-38. Great pedigree here with dam a top performing F540 cow who has produced sons sold at \$13,000 to Colin Chapman, \$13,500 to Rocky Point Station, and a very top Crump yearling L225 sold to Peak Hill Station. We selected this bull as a back-up to use over stud cows and it is easy to see why. A top pick here!

Purchaser:

Price: \$

## Lot: 4 MEADOWSLEA P727

Birth Date: 08/10/18 ID No: 19134018727

MEADOWSLEA F540



**MEADOWSLEA M564**

MEADOWSLEA G1000

MEADOWSLEA J670

**MEADOWSLEA M1036**

MEADOWSLEA G952

INDEXES	
SR	HD
+\$90	+\$85

### 2020 TRANSTASMAN ANGUS CATTLE EVALUATION EBVS

CED	DTRS	GL	BW	200	400	600	MCW	Milk
-2.6	-5.1	-4.0	+4.9	+37	+75	+103	+92	+18
50%	34%	40%	72%	66%	66%	69%	64%	45%
SS	DC	CW	EMA	Rib Fat	Rump	RBY %	IMF %	
+2.2	-5.5	+44	+1.4	+2.0	+2.1	-0.9	+0.7	
68%	36%	55%	53%	54%	56%	49%	46%	

**Comments:** Here is another top bull sired by a yearling, and out of one of our high performing 2-year heifers once again. Sire M564 was later retained in the stud and used heavily the next year, resulting in him producing the best line of yearling sons at Meadowslea in 2020. P727 has plenty of growth, with the strong fertility traits of good scrotal size, short days to calving, and very good rib and rump fats both in the top 5% for the breed. An impressive upstanding bull with a great head and outlook.

Purchaser:

Price: \$

# 2 YEAR OLD ANGUS BULLS

## Lot: 5 MEADOWSLEA P725

Birth Date: 07/10/18 ID No: 19134018725

MEADOWSLEA F540



**MEADOWSLEA L256**

MEADOWSLEA H246

RATANUI LAD 21

**MEADOWSLEA L351**

MEADOWSLEA D168

INDEXES	
SR	HD
+\$85	+\$99

### 2020 TRANSTASMAN ANGUS CATTLE EVALUATION EBVS

CED	DTRS	GL	BW	200	400	600	MCW	Milk
<b>+3.5</b>	<b>-4.9</b>	<b>-5.6</b>	<b>+3.9</b>	<b>+32</b>	<b>+67</b>	<b>+85</b>	<b>+87</b>	<b>+19</b>
48%	35%	40%	72%	66%	67%	70%	65%	47%
SS	DC	CW	EMA	Rib Fat	Rump	RBV %	IMF %	
<b>+1.0</b>	<b>-5.2</b>	<b>+36</b>	<b>+3.2</b>	<b>+1.0</b>	<b>+1.1</b>	<b>-0.2</b>	<b>+0.1</b>	
69%	39%	55%	55%	56%	57%	51%	48%	

**Comments:** Here is a very deep-bodied bull that ticks a lot of boxes. A grandson of F540 and out of a cow by Ratanui Lad - so there is no doubt he will breed thickness and easy doing types. Good calving ease with low birthweight and short gestation makes him a good pick for heifer mating and he has those strong rib and rump fats that we value so strongly. Terrific wide top and a great hindquarter makes him a great option for both heifers or cows.

<b>Purchaser:</b>	<b>Price: \$</b>
-------------------	------------------

## Lot: 6 MEADOWSLEA P879

Birth Date: 08/10/18 ID No: 19134018879

TURHAUA CRUMBLE Y167



**TURHAUA CRUMP E5 (ET)**

TURHAUA Q263

MEADOWSLEA MEAT MACHINE G914

**MEADOWSLEA K812**

MEADOWSLEA B706

INDEXES	
SR	HD
+\$117	+\$101

### 2020 TRANSTASMAN ANGUS CATTLE EVALUATION EBVS

CED	DTRS	GL	BW	200	400	600	MCW	Milk
<b>+4.1</b>	<b>+0.1</b>	<b>-5.3</b>	<b>+2.4</b>	<b>+29</b>	<b>+61</b>	<b>+81</b>	<b>+80</b>	<b>+16</b>
56%	47%	57%	74%	69%	70%	72%	68%	60%
SS	DC	CW	EMA	Rib Fat	Rump	RBV %	IMF %	
<b>+2.1</b>	<b>-8.1</b>	<b>+26</b>	<b>+4.0</b>	<b>+2.6</b>	<b>+2.3</b>	<b>-0.1</b>	<b>-0.4</b>	
72%	52%	62%	61%	62%	63%	61%	59%	

**Comments:** We used this chap as a yearling over stud heifers and he combines the top bloodlines of Crump and Meat Machine - so there is no doubt he will be strong in the fertility and maternal traits. Maternal grandam a top producer - 10 in 10 including a stud bull. P879 has a great spread of figures for either heifer or cow mating. Low birthweight with good calving ease, short gestation, and strong scrotal size combine with very short days to calving and rib and rump fats that are all in the top 5% of the breed. A moderate framed bull with depth, thickness, easy-doing ability, and the strong coat we expect from Crump. This bull will leave very productive and fertile daughters.

<b>Purchaser:</b>	<b>Price: \$</b>
-------------------	------------------

# 2 YEAR OLD ANGUS BULLS

## Lot: 7 MEADOWSLEA P554

Birth Date: 10/09/18 ID No: 19134018554

MT MABLE THOR 660



**RANGATIRA 13-38**

KAHARAU 10-9112

TURIHAUA CRUMP E5 (ET)

**MEADOWSLEA H305**

MEADOWSLEA D186

INDEXES	
SR	HD
+\$80	+\$80

### 2020 TRANSTASMAN ANGUS CATTLE EVALUATION EBVS

CED	DTRS	GL	BW	200	400	600	MCW	Milk
-1.8	-0.4	-6.1	+5.2	+31	+60	+83	+84	+15
55%	43%	83%	75%	70%	71%	73%	69%	59%
SS	DC	CW	EMA	Rib Fat	Rump	RBY %	IMF %	
+3.1	-4.8	+27	+3.1	+2.7	+2.6	-0.3	+0.3	
72%	43%	61%	61%	61%	62%	57%	56%	

**Comments:** Here is a direct son of the \$100,000 Rangatira 13-38, out of a good-performing Crump cow who has also produced a previous top bull sold to Linnburn Station at \$11,000. P554 is a good solid type with strong fertility traits. He has short days to calving while his important scrotal size rib fat, and rump fat are in the top 10% for the breed. A correct, well-balanced bull with a good hindquarter.

<b>Purchaser:</b>	<b>Price: \$</b>
-------------------	------------------

## Lot: 8 MEADOWSLEA P548

Birth Date: 09/09/18 ID No: 19134018548

MEADOWSLEA J514



**MEADOWSLEA L226**

MEADOWSLEA H104

MEADOWSLEA K018

**MEADOWSLEA M410**

MEADOWSLEA K743

INDEXES	
SR	HD
+\$100	+\$114

### 2020 TRANSTASMAN ANGUS CATTLE EVALUATION EBVS

CED	DTRS	GL	BW	200	400	600	MCW	Milk
+5.2	-2.9	-6.6	+2.6	+40	+81	+104	+94	+21
50%	34%	39%	74%	68%	69%	72%	66%	46%
SS	DC	CW	EMA	Rib Fat	Rump	RBY %	IMF %	
+2.6	-6.3	+46	+1.7	+1.0	+1.6	-1.5	+1.8	
70%	34%	57%	56%	58%	59%	52%	50%	

**Comments:** A son of L226 and out of another of these top performing 2-year heifers. These L226 sons were a real feature of the winter sale with sons selling strongly for stud as well as a top son retained. P548 ranks exceptionally well for almost every fertility and maternal trait measurable. He has great calving ease, super low birthweight and short gestation with very good scrotal size and short days to calving. His milk and fat figures rank in the top 10% for the breed, and he scanned with the second-best IMF in this group. Terrific depth and thickness and a huge hindquarter.

<b>Purchaser:</b>	<b>Price: \$</b>
-------------------	------------------

# 2 YEAR OLD ANGUS BULLS

## Lot: 9 STERN 18711

Birth Date: 07/09/18 ID No: 12170018711

BRAVEHEART OF STERN



**MACKENZIE OF STERN**

STERN 09E103

S CHISUM 6175 (IMP USA)

**STERN L307**

STERN 13853

INDEXES	
SR	HD
+\$132	+\$118

### 2020 TRANSTASMAN ANGUS CATTLE EVALUATION EBVS

CED	DTRS	GL	BW	200	400	600	MCW	Milk
<b>+6.9</b>	<b>+7.8</b>	<b>-4.0</b>	<b>+2.4</b>	<b>+35</b>	<b>+75</b>	<b>+88</b>	<b>+55</b>	<b>+17</b>
54%	42%	65%	73%	68%	68%	67%	63%	52%
SS	DC	CW	EMA	Rib Fat	Rump	RBY %	IMF %	
<b>+2.4</b>	<b>-2.8</b>	<b>+46</b>	<b>+7.9</b>	<b>+0.7</b>	<b>+1.7</b>	<b>+0.4</b>	<b>+0.8</b>	
70%	36%	57%	56%	55%	57%	52%	49%	

**Comments:** We purchased this bull as a yearling and used him in the stud heifer mating programme. We selected him for his strong fertility traits and good muscle. He has very good calving ease with a low birthweight and good scrotal size. His EMA ranks in the top 10% for the breed and he has a strong hindquarter in a moderate frame and a very strong pedigree.

<b>Purchaser:</b>	<b>Price: \$</b>
-------------------	------------------

## Lot: 10 MEADOWSLEA P808

Birth Date: 10/09/18 ID No: 19134018808

RATANUI LAD 21



**MEADOWSLEA M541**

MEADOWSLEA H144

MEADOWSLEA F737

**MEADOWSLEA H108**

MEADOWSLEA F530

INDEXES	
SR	HD
+\$136	+\$91

### 2020 TRANSTASMAN ANGUS CATTLE EVALUATION EBVS

CED	DTRS	GL	BW	200	400	600	MCW	Milk
<b>+4.8</b>	<b>-2.9</b>	<b>-5.9</b>	<b>+1.7</b>	<b>+27</b>	<b>+53</b>	<b>+51</b>	<b>+34</b>	<b>+18</b>
48%	34%	37%	73%	66%	66%	69%	64%	48%
SS	DC	CW	EMA	Rib Fat	Rump	RBY %	IMF %	
<b>+3.1</b>	<b>-8.6</b>	<b>+23</b>	<b>+3.8</b>	<b>+5.0</b>	<b>+6.1</b>	<b>-1.9</b>	<b>+1.6</b>	
69%	37%	55%	53%	54%	56%	48%	41%	

**Comments:** Here is a very good heifer mating prospect to lead out this pen of moderate-framed bulls. By a very good yearling bull who went on to be sold to Bannockburn Angus for \$13,200 in our 2018 spring sale, P808 was a very impressive yearling and scanned exceptionally well, with the biggest EMA and the top rib fat in the group, as well as the highest IMF% we have ever recorded. He was also measured with the largest scrotal size in the group. With all this fertility and carcass performance we selected him to mate yearling stud heifers, and he was used to follow up the heifer mating - running with a mob of 188 stud heifers that tested with only 2 empties. This meant he recorded a light 600-day weight. He has exceptional fertility and maternal traits, and ranks in the top 10% of the breed for low birthweight, scrotal size, and short days to calving. His rib and rump fats are off the scale.

<b>Purchaser:</b>	<b>Price: \$</b>
-------------------	------------------

# 2 YEAR OLD ANGUS BULLS

## Lot: 11 MEADOWSLEA P715

Birth Date: 06/10/18 ID No: 19134018715

S CHISUM 6175 (IMP USA)



**TURIHAUA LOYALTY L44 (ET)**

TURIHAUA D224 (ET)

MEADOWSLEA J514

**MEADOWSLEA L293**

MEADOWSLEA H274

INDEXES	
SR	HD
+\$115	+\$83

### 2020 TRANSTASMAN ANGUS CATTLE EVALUATION EBVS

CED	DTRS	GL	BW	200	400	600	MCW	Milk
-4.1	-3.7	-4.2	+5.3	+41	+79	+102	+89	+14
52%	42%	47%	73%	68%	69%	72%	66%	52%
SS	DC	CW	EMA	Rib Fat	Rump	RBY %	IMF %	
+1.5	-5.1	+45	+4.3	+0.1	+0.7	+0.2	+0.5	
70%	39%	58%	58%	59%	60%	54%	53%	

**Comments:** The first of the Turihaua Loyalty sons here and this is a top bull who we really rate. Out of a good young cow by Meadowslea J514 who was sold to Earnsclough Station for \$17,000, where he is breeding exceptionally well. P715 is a very correct young sire with a lovely top-line and great feet and leg structure. He has shown very good growth within a moderate frame and we think he will make a very impressive herd sire. Definitely worthy of close inspection.

<b>Purchaser:</b>	<b>Price: \$</b>
-------------------	------------------

## Lot: 12 MEADOWSLEA P633

Birth Date: 26/09/18 ID No: 19134018633

S CHISUM 6175 (IMP USA)



**TURIHAUA LOYALTY L44 (ET)**

TURIHAUA D224 (ET)

MEADOWSLEA F540

**MEADOWSLEA L154**

MEADOWSLEA G1076

INDEXES	
SR	HD
+\$122	+\$96

### 2020 TRANSTASMAN ANGUS CATTLE EVALUATION EBVS

CED	DTRS	GL	BW	200	400	600	MCW	Milk
+2.5	+2.0	-5.8	+2.4	+33	+66	+76	+59	+18
52%	42%	49%	73%	68%	69%	72%	67%	53%
SS	DC	CW	EMA	Rib Fat	Rump	RBY %	IMF %	
+2.0	-6.3	+37	+4.0	+0.3	+1.3	-0.3	+0.8	
70%	41%	58%	58%	59%	60%	55%	53%	

**Comments:** Another son of Turihaua Loyalty, this fellow is out of a cow by F540 so we would expect good maternal and fertility traits. P633 is another very good heifer mating prospect with a super low birthweight, calving ease, short gestation, and the important fertility traits of good scrotal size and short days to calving. He scanned well for EMA and recorded the second-best IMF in the group as well. A bull with a great top-line and very good coat.

<b>Purchaser:</b>	<b>Price: \$</b>
-------------------	------------------

# WE'VE MADE BULLS MORE ATTRACTIVE.

14 days  
**FREE**  
cover

**6.5%**  
for 12  
months

The handsome beasts in this catalogue will look even more appealing on sale day, thanks to FMG – the country's leading rural insurer. With 14 days free Exclusive Bull Cover, they'll be automatically insured from the fall of the hammer, covering their transit and infertility. And you can keep that cover going for the remaining 12 months for just 6.5% of the purchase price, for bulls up to the value of \$50,000. So don't miss this chance to buy bulls covered by FMG. It's a mighty attractive offer.

Please note this is only a summary of FMG products and services and is subject to our specific product documentation. For full details, refer to the relevant policy wordings at [fmg.co.nz](http://fmg.co.nz)

*We're here for the good of the country.*

**FMG**  
Advice & Insurance

# 2 YEAR OLD ANGUS BULLS

## Lot: 13 MEADOWSLEA P711

Birth Date: 05/10/18 ID No: 19134018711

MEADOWSLEA MEAT MACHINE G914



**MEADOWSLEA K703**

MEADOWSLEA H126

KAHARAU PRINCE 354

**MEADOWSLEA F596**

MEADOWSLEA B636

INDEXES	
SR	HD
+\$102	+\$102

### 2020 TRANSTASMAN ANGUS CATTLE EVALUATION EBVS

CED	DTRS	GL	BW	200	400	600	MCW	Milk
+3.8	-2.1	-3.9	+4.2	+34	+69	+96	+110	+12
53%	39%	52%	75%	70%	71%	73%	68%	55%
SS	DC	CW	EMA	Rib Fat	Rump	RBY %	IMF %	
+2.9	-7.6	+36	+3.1	+2.5	+3.5	-1.1	+0.0	
73%	42%	59%	59%	60%	61%	55%	53%	

**Comments:** We used this bull as a yearling to mate stud heifers. Being by K703, who is a son of the Meat Machine, we would expect him to be deep, thick and easy-doing and he certainly doesn't disappoint! Out of a very good 10-year-old cow by the \$30,000 Kaharau Prince, she has previously bred a \$10,000 son to Strathavon and was herself sold in this year's female sale to Alex Familton. P711 has terrific fertility traits once again with the important short days to calving, scrotal size, and rib and rump fats all in the top 10% of the breed. He is a great pick for heifer mating with moderate birth weight, good calving ease, and a nice smooth shoulder.

<b>Purchaser:</b>	<b>Price: \$</b>
-------------------	------------------

## Lot: 14 MEADOWSLEA P771

Birth Date: 26/10/18 ID No: 19134018771

GLANWORTH WAIGROUP 0816



**MEADOWSLEA MEAT MACHINE G914**

MEADOWSLEA D101

MEADOWSLEA D098

**MEADOWSLEA F536**

MEADOWSLEA D258

INDEXES	
SR	HD
+\$126	+\$99

### 2020 TRANSTASMAN ANGUS CATTLE EVALUATION EBVS

CED	DTRS	GL	BW	200	400	600	MCW	Milk
+4.6	+0.3	-3.2	+3.4	+29	+62	+73	+63	+15
53%	40%	46%	74%	70%	71%	73%	69%	60%
SS	DC	CW	EMA	Rib Fat	Rump	RBY %	IMF %	
+1.3	-6.5	+33	+5.5	+1.8	+2.1	+0.3	-0.6	
72%	47%	60%	60%	61%	62%	56%	55%	

**Comments:** Here is another similar type of bull, this time by Meat Machine himself. Out of a good old cow who has produced 8 in 8 including a \$10,000 bull to Rocky Point Station. Great longevity traits in this pedigree that are so important for profitability, with grandam producing 9 in 9 and Meat Machine himself still going strong at rising 9 years old. P771 has a great spread of figures for heifer mating with good calving ease, low birth weight, and short days to calving. His rib and rump fats are once again in the top 10% of the breed and he has plenty of EMA, all combining to give him a great set of data for mating heifers in hill country.

<b>Purchaser:</b>	<b>Price: \$</b>
-------------------	------------------

# 2 YEAR OLD ANGUS BULLS

## Lot: 15 MEADOWSLEA P859

Birth Date: 03/10/18 ID No: 19134018859

TURIHAUA CRUMP E5 (ET)



**MEADOWSLEA K811**

MEADOWSLEA E399

GOLDWYN 017

**MEADOWSLEA L310**

MEADOWSLEA G1004

INDEXES	
SR	HD
+\$100	+\$92

### 2020 TRANSTASMAN ANGUS CATTLE EVALUATION EBVS

CED	DTRS	GL	BW	200	400	600	MCW	Milk
<b>+2.5</b>	<b>-2.5</b>	<b>-5.4</b>	<b>+2.7</b>	<b>+29</b>	<b>+57</b>	<b>+75</b>	<b>+70</b>	<b>+13</b>
49%	38%	43%	72%	65%	65%	63%	61%	48%
SS	DC	CW	EMA	Rib Fat	Rump	RBV %	IMF %	
<b>+1.7</b>	<b>-6.1</b>	<b>+27</b>	<b>+1.7</b>	<b>+1.7</b>	<b>+2.1</b>	<b>-0.9</b>	<b>+1.1</b>	
67%	40%	54%	54%	55%	56%	51%	49%	

**Comments:** Here is another moderate-framed bull that is ideally suited to mating heifers. By a son of Crump and out of a good young cow by Goldwyn 17, P859 has calving ease with a super low birth weight and short gestation. Again, he exhibits those important fertility traits of short days to calving and his rib and rump fats are in the top 10% for the breed. A nice easy-doing bull with a great skin and coat ideal for the harshest country.

**Purchaser:**

**Price: \$**

## Lot: 16 MEADOWSLEA P655

Birth Date: 29/09/18 ID No: 19134018655

RANGATIRA 13-38



**MEADOWSLEA M455**

MEADOWSLEA H153

MEADOWSLEA C847

**MEADOWSLEA E350**

MEADOWSLEA C914

INDEXES	
SR	HD
+\$93	+\$99

### 2020 TRANSTASMAN ANGUS CATTLE EVALUATION EBVS

CED	DTRS	GL	BW	200	400	600	MCW	Milk
<b>+3.6</b>	<b>-0.1</b>	<b>-4.8</b>	<b>+3.8</b>	<b>+31</b>	<b>+61</b>	<b>+77</b>	<b>+84</b>	<b>+13</b>
49%	36%	55%	72%	66%	67%	70%	64%	50%
SS	DC	CW	EMA	Rib Fat	Rump	RBV %	IMF %	
<b>+2.2</b>	<b>-4.3</b>	<b>+29</b>	<b>+4.5</b>	<b>+1.0</b>	<b>+1.2</b>	<b>+0.3</b>	<b>+0.4</b>	
70%	38%	56%	55%	56%	57%	51%	48%	

**Comments:** To lead off this pen of bigger-framed bulls we have a very well-bred sire. By a son of the \$100,000 Rangatira bull who went on to be sold to Melrose Station, and out of a great old cow E350 who was our top 10-year-old cow in the 2019 female, sale sold to Pikoburn Angus for \$5000. She bred our retained stud sire last year N119, as well as M495 - the sire of lot 1 in this sale. P655 is an impressive type with terrific figures for heifer mating. Good calving ease with moderate birthweight, good scrotal size and muscle with very easy-doing rib and rump fats. Deep, thick-bodied bull that is worth a close look on pedigree alone!

**Purchaser:**

**Price: \$**



# 2 YEAR OLD ANGUS BULLS

## Lot: 17 MEADOWSLEA P875

Birth Date: 07/10/18 ID No: 19134018875

WAITERENUI ALLIANCE J144



**MEADOWSLEA M534**

MEADOWSLEA H107

KAHARAU CLARION 844

**MEADOWSLEA H167**

MEADOWSLEA B697

INDEXES	
SR	HD
+\$106	+\$74

### 2020 TRANSTASMAN ANGUS CATTLE EVALUATION EBVS

CED	DTRS	GL	BW	200	400	600	MCW	Milk
<b>-3.6</b>	<b>-5.8</b>	<b>-4.2</b>	<b>+4.1</b>	<b>+33</b>	<b>+69</b>	<b>+83</b>	<b>+73</b>	<b>+16</b>
48%	37%	44%	71%	65%	66%	69%	63%	48%
SS	DC	CW	EMA	Rib Fat	Rump	RBY %	IMF %	
<b>+2.0</b>	<b>-5.5</b>	<b>+35</b>	<b>+3.1</b>	<b>+2.5</b>	<b>+2.6</b>	<b>-0.7</b>	<b>+0.6</b>	
69%	39%	55%	54%	55%	57%	50%	47%	

**Comments:** By the yearling M534 who was out of a top-breeding F540 cow. Dam H167 has produced 6 in 6 and grandam B697 was a great old cow who produced 12 in 12 including 4 good sale bulls. P875 is a bigger-framed bull with moderate birth weight. He is strong in the fertility traits with short days to calving, good scrotal size, and those rib and rump fats in the top 5% of the breed. A well-balanced, upstanding bull with clean shoulders.

<b>Purchaser:</b>	<b>Price: \$</b>
-------------------	------------------

## Lot: 18 MEADOWSLEA P916

Birth Date: 05/10/18 ID No: 19134018916

MEADOWSLEA F540

**MEADOWSLEA L256**

MEADOWSLEA H246

MEADOWSLEA B571

**MEADOWSLEA K042**

MEADOWSLEA C808

INDEXES	
SR	HD
+\$86	+\$63

### 2020 TRANSTASMAN ANGUS CATTLE EVALUATION EBVS

CED	DTRS	GL	BW	200	400	600	MCW	Milk
<b>-4.2</b>	<b>-6.9</b>	<b>-4.1</b>	<b>+4.7</b>	<b>+27</b>	<b>+61</b>	<b>+68</b>	<b>+64</b>	<b>+16</b>
47%	35%	40%	70%	64%	65%	68%	63%	46%
SS	DC	CW	EMA	Rib Fat	Rump	RBY %	IMF %	
<b>+0.4</b>	<b>-4.4</b>	<b>+26</b>	<b>+2.3</b>	<b>+1.2</b>	<b>+1.7</b>	<b>-0.6</b>	<b>+0.2</b>	
67%	39%	54%	53%	54%	55%	49%	47%	

**Comments:** Here is a grandson of F540. A nicely-balanced bull with clean shoulders and a moderate frame. He has those very easy doing rib and rump fats and plenty of depth and thickness.

<b>Purchaser:</b>	<b>Price: \$</b>
-------------------	------------------

# 2 YEAR OLD ANGUS BULLS

## Lot: 19 MEADOWSLEA P668

Birth Date: 30/09/18 ID No: 19134018668

RANGATIRA 13-38

**MEADOWSLEA M444**

MEADOWSLEA H134

GLANWORTH WAIGROUP 0816

**MEADOWSLEA H191**

MEADOWSLEA D248

INDEXES	
SR	HD
+\$102	+\$83

### 2020 TRANSTASMAN ANGUS CATTLE EVALUATION EBVS

CED	DTRS	GL	BW	200	400	600	MCW	Milk
-1.1	+0.4	-4.7	+4.8	+31	+65	+79	+80	+14
48%	36%	54%	72%	66%	67%	71%	65%	50%
SS	DC	CW	EMA	Rib Fat	Rump	RBY %	IMF %	
+1.5	-5.0	+34	+3.1	+1.2	+1.3	+0.3	+0.0	
70%	39%	56%	56%	57%	58%	52%	49%	

**Comments:** This chap is a grandson of the \$100,000 Rangatira bull 13-38. He is deep, thick, and medium-framed with a top hindquarter. He has a moderate birthweight and those strong rib and rump fats once again.

Purchaser:

Price: \$

## Lot: 20 MEADOWSLEA P814

Birth Date: 16/09/18 ID No: 19134018814

MEADOWSLEA J514

**MEADOWSLEA L265**

MEADOWSLEA F612

MEADOWSLEA 70

**MEADOWSLEA C879**

MEADOWSLEA 975



INDEXES	
SR	HD
+\$93	+\$61

### 2020 TRANSTASMAN ANGUS CATTLE EVALUATION EBVS

CED	DTRS	GL	BW	200	400	600	MCW	Milk
-6.6	-10.9	-2.4	+6.1	+34	+65	+80	+89	+12
52%	40%	83%	74%	68%	68%	71%	66%	53%
SS	DC	CW	EMA	Rib Fat	Rump	RBY %	IMF %	
+2.8	-5.8	+33	+4.2	+1.5	+2.8	-0.4	+0.3	
71%	40%	57%	56%	57%	58%	52%	49%	

**Comments:** Here is a stylish, upstanding bull that will take the eye! His sire was our top-priced bull in the 2017 bull sale selling to Merchiston Angus for \$20,000 and his dam is a great old cow who produced 11 good calves in 11 years. P814 is ideally suited to mating adult cows and is very strong in the fertility traits with short days to calving, while his scrotal size and rib and rump fats are all in the top 10% for the breed. This is a very sound upstanding bull with a great outlook.

Purchaser:

Price: \$

# 2 YEAR OLD ANGUS BULLS

## Lot: 21 MEADOWSLEA P648

Birth Date: 28/09/18 ID No: 19134018648

S CHISUM 6175 (IMP USA)

**TURIHAUA LOYALTY L44 (ET)**

TURIHAUA D224 (ET)

MEADOWSLEA F540

**MEADOWSLEA J508**

MEADOWSLEA F596

INDEXES	
SR	HD
<b>+\$114</b>	<b>+\$107</b>

### 2020 TRANSTASMAN ANGUS CATTLE EVALUATION EBVS

CED	DTRS	GL	BW	200	400	600	MCW	Milk
<b>+4.5</b>	<b>+2.8</b>	<b>-5.9</b>	<b>+2.6</b>	<b>+34</b>	<b>+71</b>	<b>+90</b>	<b>+90</b>	<b>+16</b>
53%	43%	52%	74%	69%	70%	73%	67%	55%
SS	DC	CW	EMA	Rib Fat	Rump	RBV %	IMF %	
<b>+2.9</b>	<b>-6.6</b>	<b>+43</b>	<b>+3.1</b>	<b>+0.0</b>	<b>+0.8</b>	<b>+0.1</b>	<b>+0.3</b>	
71%	41%	59%	59%	60%	61%	55%	54%	

**Comments:** A son of Turihaua Loyalty out of an F540 cow so we expect good maternal and fertility traits. P648 is ideal for mating heifers with super low birthweight, great calving ease, and short gestation. His short days to calving and scrotal size are in the top 25% of the breed.

Purchaser:

Price: \$

## Lot: 22 MEADOWSLEA P820

Birth Date: 21/09/18 ID No: 19134018820

S CHISUM 6175 (IMP USA)

**TURIHAUA LOYALTY L44 (ET)**

TURIHAUA D224 (ET)

TURIHAUA CRUMP E5 (ET)

**MEADOWSLEA J646**

MEADOWSLEA F704



INDEXES	
SR	HD
<b>+\$128</b>	<b>+\$94</b>

### 2020 TRANSTASMAN ANGUS CATTLE EVALUATION EBVS

CED	DTRS	GL	BW	200	400	600	MCW	Milk
<b>+2.9</b>	<b>+3.5</b>	<b>-5.9</b>	<b>+1.4</b>	<b>+30</b>	<b>+59</b>	<b>+67</b>	<b>+51</b>	<b>+15</b>
53%	44%	50%	74%	68%	69%	72%	66%	54%
SS	DC	CW	EMA	Rib Fat	Rump	RBV %	IMF %	
<b>+0.5</b>	<b>-6.1</b>	<b>+30</b>	<b>+5.0</b>	<b>+1.7</b>	<b>+1.8</b>	<b>-0.4</b>	<b>+1.0</b>	
70%	42%	58%	58%	59%	60%	55%	54%	

**Comments:** Here is another exceptionally low birthweight Loyalty son, this time out of a good Crump cow. P820 is a very good heifer mating option with calving ease and short gestation, and is very sound bull with a clean shoulder. He scanned very well for EMA and IMF.

Purchaser:

Price: \$

# 2 YEAR OLD ANGUS BULLS

## Lot: 23 MEADOWSLEA P841

Birth Date: 29/09/18 ID No: 19134018841

S CHISUM 6175 (IMP USA)

**TURIHAUA LOYALTY L44 (ET)**

TURIHAUA D224 (ET)

MEADOWSLEA 159

**MEADOWSLEA D186**

MEADOWSLEA 9117

INDEXES	
SR	HD
<b>+\$141</b>	<b>+\$72</b>

### 2020 TRANSTASMAN ANGUS CATTLE EVALUATION EBVS

CED	DTRS	GL	BW	200	400	600	MCW	Milk
<b>-2.3</b>	<b>+0.7</b>	<b>-3.7</b>	<b>+3.1</b>	<b>+28</b>	<b>+53</b>	<b>+58</b>	<b>+45</b>	<b>+12</b>
54%	45%	52%	75%	70%	71%	74%	68%	57%
SS	DC	CW	EMA	Rib Fat	Rump	RBV %	IMF %	
<b>+3.2</b>	<b>-7.7</b>	<b>+26</b>	<b>+5.2</b>	<b>+2.6</b>	<b>+3.7</b>	<b>+0.0</b>	<b>+0.4</b>	
72%	44%	60%	59%	60%	61%	56%	54%	

**Comments:** Another Turihaua Loyalty son to follow, out of a great old cow who has produced 9 in 9. P841 is another good heifer mating option with low birthweight and exceptionally strong fertility traits. His scrotal size, short days to calving, and rib and rump fats all rank in the top 10% of the breed. He scanned with the second-biggest EMA in the group, as well as the top rib and rump fats, and also measured with the second-best scrotal.

Purchaser:

Price: \$

## Lot: 24 MEADOWSLEA P716

Birth Date: 06/10/18 ID No: 19134018716

MEADOWSLEA J514

**MEADOWSLEA L226**

MEADOWSLEA H104

MEADOWSLEA C875

**MEADOWSLEA E274**

MEADOWSLEA C845

INDEXES	
SR	HD
<b>+\$115</b>	<b>+\$83</b>

### 2020 TRANSTASMAN ANGUS CATTLE EVALUATION EBVS

CED	DTRS	GL	BW	200	400	600	MCW	Milk
<b>-1.3</b>	<b>-7.2</b>	<b>-4.8</b>	<b>+4.7</b>	<b>+35</b>	<b>+68</b>	<b>+83</b>	<b>+85</b>	<b>+12</b>
51%	36%	42%	75%	69%	70%	71%	66%	53%
SS	DC	CW	EMA	Rib Fat	Rump	RBV %	IMF %	
<b>+2.4</b>	<b>-7.2</b>	<b>+33</b>	<b>+1.4</b>	<b>+0.8</b>	<b>+1.8</b>	<b>-0.4</b>	<b>+0.3</b>	
72%	41%	58%	58%	59%	60%	54%	53%	

**Comments:** Here is a son of L226 and out of a good old cow E274 who produced 8 in 8, including a top bull to Turner Farming in Hawkes Bay. P716 is a moderate-framed bull with strong scrotal size, short days to calving, and good rib and rump fats.

Purchaser:

Price: \$

# 2 YEAR OLD ANGUS BULLS

## Lot: 25 MEADOWSLEA P520

Birth Date: 03/09/18 ID No: 19134018520

TURIHAUA CRUMP E5 (ET)



MEADOWSLEA L054

MEADOWSLEA E420

GLANWORTH WAIGROUP 0816

MEADOWSLEA G922

MEADOWSLEA A330

INDEXES	
SR	HD
+\$122	+\$107

### 2020 TRANSTASMAN ANGUS CATTLE EVALUATION EBVS

CED	DTRS	GL	BW	200	400	600	MCW	Milk
+3.7	+1.9	-8.2	+3.2	+36	+68	+93	+89	+16
51%	39%	82%	73%	66%	67%	71%	65%	51%

SS	DC	CW	EMA	Rib Fat	Rump	RBV %	IMF %
+2.6	-7.2	+37	+3.3	+2.2	+2.0	+0.6	-0.8
70%	42%	57%	56%	57%	58%	52%	49%

**Comments:** To lead out this second paddock of bulls is a very impressive prospect - P520 is a 3/4 brother to our top keeper bull in 2019 N166. His dam G922 is our top breeding cow and is also the dam of M429, who was sold to Red Oak stud for \$18,000 in the 2018 sale, and she has bred 2 other top sale bulls. His sire was lot 2 in our 2016 sale and sold to Mt Gerald Station for \$14,000. P520 had the heaviest weaning weight in the herd and continued on to have the third-heaviest 400 day weight. He has good calving ease with exceptionally short gestation and low birthweight. Very good fertility traits with good scrotal size and short days to calving in the top 10% for the breed, while his rib and rump fats are in the top 5% of the breed. This bull was lot 16 in the winter sale but unfortunately developed a penile wart which has now resolved. He has been vet checked and semen tested.

Purchaser:

Price: \$

## Lot: 26 MEADOWSLEA P504

Birth Date: 27/08/18 ID No: 19134018504

KAYJAY FREEDOM I36



MEADOWSLEA M525

MEADOWSLEA 147

TURIHAUA CRUMP E5 (ET)

MEADOWSLEA M560

MEADOWSLEA H201

INDEXES	
SR	HD
+\$77	+\$92

### 2020 TRANSTASMAN ANGUS CATTLE EVALUATION EBVS

CED	DTRS	GL	BW	200	400	600	MCW	Milk
+4.5	-2.7	-5.4	+2.7	+25	+49	+64	+61	+12
47%	35%	41%	70%	64%	65%	69%	63%	45%

SS	DC	CW	EMA	Rib Fat	Rump	RBV %	IMF %
+1.3	-3.7	+22	+1.4	+2.5	+2.4	-1.0	+0.5
69%	37%	54%	54%	54%	56%	49%	46%

**Comments:** Another very good heifer mating prospect here in this nice compact bull bred out of a 2-year heifer by Crump, and sired by a good yearling who was sold in the 2018 sale to Dovedale for \$15,000. Grandam has produced 3 good sale bulls. P504 has great heifer mating figures with calving ease, low birthweight, and exceptionally strong rib and rump fats in the top 5% for the breed. A moderate-framed, square, deep-bodied type with a top back-end - definitely worth a close look!

Purchaser:

Price: \$

# 2 YEAR OLD ANGUS BULLS

## Lot: 27 MEADOWSLEA P911

Birth Date: 01/10/18 ID No: 19134018911

MEADOWSLEA J670



**MEADOWSLEA M486**

MEADOWSLEA E274

MEADOWSLEA F540

**MEADOWSLEA K030**

MEADOWSLEA 231

INDEXES	
SR	HD
+\$100	+\$78

### 2020 TRANSTASMAN ANGUS CATTLE EVALUATION EBVS

CED	DTRS	GL	BW	200	400	600	MCW	Milk
-1.5	-6.6	-5.3	+4.1	+31	+63	+78	+50	+19
43%	33%	38%	62%	65%	67%	70%	63%	48%
SS	DC	CW	EMA	Rib Fat	Rump	RBY %	IMF %	
+2.0	-5.2	+28	+2.3	+1.9	+2.8	-1.0	+0.7	
70%	39%	55%	55%	56%	58%	51%	48%	

**Comments:** Another moderate-birthweight bull here, this time out of an F540 daughter who has produced a top yearling son sold for stud to Harvey Hutchison. Grandam also breeding well with 12 in 12 including a son to Rocky Point for \$13,000. P911 has a nice clean shoulder with a compact frame. He has good scrotal size and short days to calving with exceptionally strong rib and rump fats giving him the easy-doing attributes with strong fertility traits we require in the hill-country. He has a great top and balance about him and is another bull worth a close inspection.

<b>Purchaser:</b>	<b>Price: \$</b>
-------------------	------------------

## Lot: 28 MEADOWSLEA P817

Birth Date: 19/09/18 ID No: 19134018817

TURHAUA CRUMBLE Y167



**TURHAUA CRUMP E5 (ET)**

TURHAUA Q263

MEADOWSLEA 159

**MEADOWSLEA F570**

MEADOWSLEA 267

INDEXES	
SR	HD
+\$85	+\$87

### 2020 TRANSTASMAN ANGUS CATTLE EVALUATION EBVS

CED	DTRS	GL	BW	200	400	600	MCW	Milk
+0.9	-2.6	-5.4	+3.4	+27	+55	+80	+82	+16
58%	50%	66%	75%	70%	71%	73%	70%	64%
SS	DC	CW	EMA	Rib Fat	Rump	RBY %	IMF %	
+1.7	-6.9	+22	+1.7	+1.9	+1.5	-0.3	-0.2	
72%	53%	63%	63%	64%	64%	62%	60%	

**Comments:** Here is a bigger-framed son of old Crump himself, out of a good 10-year-old cow we sold at lot 115 in our 2020 female sale. She has produced 8 in 8, and the grandam has produced 7 in 7, so plenty of longevity here! P817 has calving ease with moderate birthweight for heifer mating. He has very strong fertility traits, with short days to calving, and those strong rib and rump fats so essential in the hill-country. This is an impressive bull who has really come on lately.

<b>Purchaser:</b>	<b>Price: \$</b>
-------------------	------------------

# 2 YEAR OLD ANGUS BULLS

## Lot: 29 MEADOWSLEA P809

Birth Date: 11/09/18 ID No: 19134018809

MEADOWSLEA J406



**MEADOWSLEA L202**

MEADOWSLEA J428

MEADOWSLEA 159

**MEADOWSLEA B697**

MEADOWSLEA 933

INDEXES	
SR	HD
+\$100	+\$74

### 2020 TRANSTASMAN ANGUS CATTLE EVALUATION EBVS

CED	DTRS	GL	BW	200	400	600	MCW	Milk
<b>-3.6</b>	<b>-3.3</b>	<b>-5.2</b>	<b>+5.3</b>	<b>+29</b>	<b>+59</b>	<b>+84</b>	<b>+83</b>	<b>+10</b>
51%	38%	82%	72%	66%	67%	71%	65%	50%
SS	DC	CW	EMA	Rib Fat	Rump	RBV %	IMF %	
<b>+2.7</b>	<b>-6.4</b>	<b>+33</b>	<b>+0.7</b>	<b>+1.1</b>	<b>+1.9</b>	<b>-0.2</b>	<b>+0.3</b>	
70%	42%	56%	54%	54%	56%	49%	46%	

**Comments:** This chap is by L202 who was a standout bull in our 2017 sale and sold to Baker Farms for \$13,500. Dam a very good old cow producing 13 good calves including 4 previous sale bulls. P809 has very strong fertility traits once again with short days to calving, scrotal size, rib fat and rump fat all in the top 20% of the breed.

<b>Purchaser:</b>	<b>Price: \$</b>
-------------------	------------------

## Lot: 30 MEADOWSLEA P848

Birth Date: 30/09/18 ID No: 19134018848

MEADOWSLEA D227



**MEADOWSLEA F540**

MEADOWSLEA D042

MEADOWSLEA 70

**MEADOWSLEA C983**

MEADOWSLEA 39

INDEXES	
SR	HD
+\$72	+\$84

### 2020 TRANSTASMAN ANGUS CATTLE EVALUATION EBVS

CED	DTRS	GL	BW	200	400	600	MCW	Milk
<b>-1.4</b>	<b>-8.8</b>	<b>-5.7</b>	<b>+5.7</b>	<b>+35</b>	<b>+69</b>	<b>+86</b>	<b>+86</b>	<b>+18</b>
58%	48%	56%	76%	72%	73%	75%	71%	65%
SS	DC	CW	EMA	Rib Fat	Rump	RBV %	IMF %	
<b>+2.8</b>	<b>-3.5</b>	<b>+35</b>	<b>+0.2</b>	<b>+1.1</b>	<b>+1.7</b>	<b>-0.5</b>	<b>+0.9</b>	
74%	55%	63%	63%	64%	64%	60%	58%	

**Comments:** Here is a bigger-framed F540 son, out of a good old cow by Meadowslea 70 who has produced 10 in 10 including four previous sale bulls. P848 has good solid growth with strong scrotal size and those rib and rump fats are in the top 20% for the breed.

<b>Purchaser:</b>	<b>Price: \$</b>
-------------------	------------------



Proven performance.



Error free, convenient  
DNA sampling with Allflex TSU  
(tissue sampling unit).

**Allflex**<sup>®</sup>

Livestock Intelligence

Duncan Steans 027446 5508 (Upper North)  
Mark McManaway 027 517 6693 (Lower North)  
Steve Kelly 027 560 2699 (South Island)

[www.allflex.co.nz](http://www.allflex.co.nz)



# 2 YEAR OLD ANGUS BULLS

## Lot: 31 MEADOWSLEA P824

Birth Date: 22/09/18 ID No: 19134018824

MEADOWSLEA J670



**MEADOWSLEA M486**

MEADOWSLEA E274

MEADOWSLEA H122

**MEADOWSLEA K933**

MEADOWSLEA 251

INDEXES	
SR	HD
+\$109	+\$79

### 2020 TRANSTASMAN ANGUS CATTLE EVALUATION EBVS

CED	DTRS	GL	BW	200	400	600	MCW	Milk
-1.6	-4.3	-4.4	+4.1	+29	+61	+74	+65	+16
45%	31%	33%	71%	65%	66%	70%	63%	43%
SS	DC	CW	EMA	Rib Fat	Rump	RBY %	IMF %	
+2.4	-6.0	+28	+2.8	+1.2	+1.8	+0.3	-0.3	
68%	35%	54%	53%	55%	56%	49%	46%	

**Comments:** A moderate birthweight, bigger-framed bull here, out of a cow going back to F540. P824 has strong fertility traits, with short days to calving and good scrotal size. He is strong in the important rib and rump fats to ensure the fertility and easy-doing ability needed for hill-country.

Purchaser:

Price: \$

## Lot: 32 MEADOWSLEA P602

Birth Date: 20/09/18 ID No: 19134018602

MEADOWSLEA K018

**MEADOWSLEA M1004**

MEADOWSLEA K874

MEADOWSLEA K904

**MEADOWSLEA M440**

MEADOWSLEA K727

INDEXES	
SR	HD
+\$90	+\$73

### 2020 TRANSTASMAN ANGUS CATTLE EVALUATION EBVS

CED	DTRS	GL	BW	200	400	600	MCW	Milk
-4.4	-3.5	-4.9	+5.3	+35	+70	+89	+95	+17
48%	30%	37%	72%	65%	65%	70%	64%	39%
SS	DC	CW	EMA	Rib Fat	Rump	RBY %	IMF %	
+3.5	-6.7	+38	+1.0	+2.7	+3.9	-1.7	+1.8	
68%	31%	53%	52%	53%	55%	48%	44%	

**Comments:** The sire of this chap was used as a yearling and sold on to Piko Burn Angus in our 2018 spring sale for \$10,000. P602 is out of a 2-year heifer once again, whose sire by K904 has left very strong fertility traits. These certainly show up in P602 with the important scrotal size, short days to calving, and rib and rump fat all in the top 10% for the breed.

Purchaser:

Price: \$

# 2 YEAR OLD ANGUS BULLS

## Lot: 33 MEADOWSLEA P530

Birth Date: 06/09/18 ID No: 19134018530

MEADOWSLEA K018

**MEADOWSLEA M420**

MEADOWSLEA K932

MEADOWSLEA K886

**MEADOWSLEA M449**

MEADOWSLEA K754

INDEXES	
SR	HD
+\$127	+\$77

### 2020 TRANSTASMAN ANGUS CATTLE EVALUATION EBVS

CED	DTRS	GL	BW	200	400	600	MCW	Milk
<b>-4.3</b>	<b>-6.4</b>	<b>-5.0</b>	<b>+5.3</b>	<b>+37</b>	<b>+74</b>	<b>+92</b>	<b>+81</b>	<b>+16</b>
50%	36%	38%	71%	65%	66%	71%	64%	43%
SS	DC	CW	EMA	Rib Fat	Rump	RBV %	IMF %	
<b>+2.7</b>	<b>-8.1</b>	<b>+37</b>	<b>+3.7</b>	<b>+2.0</b>	<b>+2.3</b>	<b>-0.4</b>	<b>+0.9</b>	
69%	34%	55%	54%	55%	57%	50%	46%	

**Comments:** Here is another really thick bull bred by a yearling and out of a 2-year heifer who is a Crump granddaughter. He has scrotal size in the top 15% for the breed while his short days to calving is in the top 5%. P530 is a very easy-doing type, with rib and rump fats in the top 5% of the breed, as well as a great hindquarter.

<b>Purchaser:</b>	<b>Price: \$</b>
-------------------	------------------

# YEARLING ANGUS BULLS

## Lot: 34 MEADOWSLEA Q372

Birth Date: 06/10/19 ID No: 19134019372

S CHISUM 6175 (IMP USA)

**TURIHAUA LOYALTY L44 (ET)**

TURIHAUA D224 (ET)

TURIHAUA CRUMP E5 (ET)

**MEADOWSLEA J447**

MEADOWSLEA C949

INDEXES	
SR	HD
<b>+\$112</b>	<b>+\$77</b>

### 2020 TRANSTASMAN ANGUS CATTLE EVALUATION EBVS

CED	DTRS	GL	BW	200	400	600	MCW	Milk
<b>-3.2</b>	<b>+1.9</b>	<b>-4.2</b>	<b>+3.9</b>	<b>+31</b>	<b>+64</b>	<b>+82</b>	<b>+74</b>	<b>+14</b>
53%	44%	53%	73%	67%	64%	65%	63%	56%
SS	DC	CW	EMA	Rib Fat	Rump	RBY %	IMF %	
<b>+1.8</b>	<b>-6.2</b>	<b>+32</b>	<b>+3.6</b>	<b>+0.3</b>	<b>+0.6</b>	<b>+0.4</b>	<b>+0.2</b>	
58%	42%	56%	55%	59%	57%	56%	55%	

**Comments:** To lead off this year's yearling sale we have the first of a great run of Turihaua Loyalty sons on offer. Q372 has a great pedigree, being out of a Turihaua Crump daughter, while his grandam bred a stud bull, L141, sold to Linnburn Station at \$11,000. He is thick, deep, and square with a tremendous head, heavy coat, and a good back-end. This is an impressive young sire who has done exceptionally well over the winter to record the heaviest 400 day in the catalogue. A top pick!

**Purchaser:**

**Price: \$**

## Lot: 35 MEADOWSLEA Q411

Birth Date: 15/10/19 ID No: 19134019411

MEADOWSLEA J514

**MEADOWSLEA L226**

MEADOWSLEA H104

GOLDWYN 017

**MEADOWSLEA J533**

MEADOWSLEA F612

INDEXES	
SR	HD
<b>+\$123</b>	<b>+\$102</b>

### 2020 TRANSTASMAN ANGUS CATTLE EVALUATION EBVS

CED	DTRS	GL	BW	200	400	600	MCW	Milk
<b>+2.9</b>	<b>-4.3</b>	<b>-5.9</b>	<b>+2.8</b>	<b>+36</b>	<b>+73</b>	<b>+93</b>	<b>+82</b>	<b>+18</b>
51%	37%	45%	73%	67%	64%	65%	63%	51%
SS	DC	CW	EMA	Rib Fat	Rump	RBY %	IMF %	
<b>+2.8</b>	<b>-8.4</b>	<b>+38</b>	<b>+1.7</b>	<b>+1.1</b>	<b>+1.6</b>	<b>-0.7</b>	<b>+0.7</b>	
56%	38%	54%	51%	54%	53%	50%	50%	

**Comments:** Here is the first of the L226 sons on offer and he has an outstanding pedigree. Dam J533 is a top breeding Goldwyn 17 cow who bred lot 1 in the 2017 bull sale to Guide Hill Stn \$14500. She also produced the lot 3 heifer in this year's female sale sold to Glen R Angus. Grandam also an outstanding cow sold in 2020 as a 10 yr. old to Waimara Angus. She bred L265 sold at \$20000 to Merchiston Angus. Q411 has a terrific spread of numbers with low birth weight, calving ease and short gestation. His fertility traits are also very strong with scrotal, short days to calving and fats all in the top 10% for the breed. Plenty of scale about this chap with a clean shoulder, length. Great topline and he scanned with the top IMF % as well. He ticks a lot of boxes!

**Purchaser:**

**Price: \$**

# YEARLING ANGUS BULLS

## Lot: 36 MEADOWSLEA Q530

Birth Date: 09/10/19 ID No: 19134019530

MEADOWSLEA D227

### MEADOWSLEA F540

MEADOWSLEA D042

MEADOWSLEA G804

### MEADOWSLEA J411

MEADOWSLEA G885

INDEXES	
SR	HD
+\$121	+\$107

### 2020 TRANSTASMAN ANGUS CATTLE EVALUATION EBVS

CED	DTRS	GL	BW	200	400	600	MCW	Milk
+6.7	+0.8	-6.6	+1.6	+31	+65	+74	+59	+20
55%	43%	55%	74%	68%	66%	66%	66%	61%
SS	DC	CW	EMA	Rib Fat	Rump	RBY %	IMF %	
+2.3	-7.3	+36	+3.5	+2.5	+3.2	-1.3	+1.6	
60%	50%	58%	57%	61%	59%	57%	57%	

**Comments:** The first of the F540 sons in this year's catalogue, and as we would expect with this bloodline he has exceptional maternal and fertility traits. Great calving ease with a super-low birth weight, his short gestation and short days to calving figures are both in the top 20% for the breed as well. A clean-shouldered, well-balanced bull with a good top-line and a bit of scale about him. He should really develop and is a top pick for heifer mating.

Purchaser:

Price: \$

## Lot: 37 MEADOWSLEA Q167

Birth Date: 26/09/19 ID No: 19134019167

TURIHAUA CRUMP E5 (ET)

### MEADOWSLEA N166

MEADOWSLEA G922

KAHARAU 07-558

### MEADOWSLEA H225

MEADOWSLEA E461

INDEXES	
SR	HD
+\$108	+\$80

### 2020 TRANSTASMAN ANGUS CATTLE EVALUATION EBVS

CED	DTRS	GL	BW	200	400	600	MCW	Milk
-1.0	-0.1	-4.1	+3.4	+29	+56	+76	+76	+14
48%	37%	42%	71%	64%	60%	61%	59%	50%
SS	DC	CW	EMA	Rib Fat	Rump	RBY %	IMF %	
+1.7	-7.8	+25	+3.4	+2.9	+3.0	-0.4	-0.5	
49%	40%	51%	46%	50%	48%	48%	46%	

**Comments:** The first son of N166 ever to be offered for sale, with all the others being retained or offered in 2021 winter sale. N166 is the top Crump son we retained in 2019 and looks set to make a huge impact in the stud. Q167 has a moderate birthweight with those important fertility traits of short days to calving and rib and rump fats in the top 5% for the breed. An impressive prospect with a quality head, clean shoulders, great length and top-line, with a strong back end.

Purchaser:

Price: \$

# YEARLING ANGUS BULLS

## Lot: 38 MEADOWSLEA Q227

Birth Date: 15/09/19 ID No: 19134019227

GLANWORTH WAIGROUP 0816

**MEADOWSLEA MEAT MACHINE G914**

MEADOWSLEA D101

PIKO BURN CHAR 26-06

**MEADOWSLEA H257**

MEADOWSLEA B695

INDEXES	
SR	HD
+\$116	+\$107

### 2020 TRANSTASMAN ANGUS CATTLE EVALUATION EBVS

CED	DTRS	GL	BW	200	400	600	MCW	Milk
<b>+6.1</b>	<b>+5.7</b>	<b>-4.6</b>	<b>+3.0</b>	<b>+29</b>	<b>+57</b>	<b>+73</b>	<b>+58</b>	<b>+14</b>
49%	38%	46%	65%	67%	65%	65%	63%	59%
SS	DC	CW	EMA	Rib Fat	Rump	RBY %	IMF %	
<b>+2.7</b>	<b>-4.0</b>	<b>+28</b>	<b>+5.2</b>	<b>+2.2</b>	<b>+2.4</b>	<b>+1.1</b>	<b>-1.1</b>	
59%	47%	56%	54%	57%	56%	53%	53%	

**Comments:** A tremendously thick and deep Meat Machine son and a real standout. Out of a top performing cow who bred lot 38 in the 2020 winter sale, sold to Kennethmont Station, a bull who was bred very similarly to this chap, and who we used as a yearling. Q227 exhibits all the same traits we love about the Meat Machine bloodline, with terrific calving ease, low birth weight, and great scrotal size. He has terrific width across the top with those easy-doing fats - in the top 5% for the breed - and the depth and thickness we strive for in the hill country. A top prospect!

**Purchaser:**

**Price: \$**

## Lot: 39 MEADOWSLEA Q376

Birth Date: 06/10/19 ID No: 19134019376

RANGATIRA 13-38

**MEADOWSLEA M452**

MEADOWSLEA H104

MEADOWSLEA 129

**MEADOWSLEA K834**

MEADOWSLEA F699

INDEXES	
SR	HD
+\$78	+\$91

### 2020 TRANSTASMAN ANGUS CATTLE EVALUATION EBVS

CED	DTRS	GL	BW	200	400	600	MCW	Milk
<b>+0.4</b>	<b>-3.1</b>	<b>-5.1</b>	<b>+5.1</b>	<b>+34</b>	<b>+66</b>	<b>+89</b>	<b>+87</b>	<b>+15</b>
44%	34%	52%	62%	63%	60%	60%	58%	50%
SS	DC	CW	EMA	Rib Fat	Rump	RBY %	IMF %	
<b>+1.9</b>	<b>-3.8</b>	<b>+33</b>	<b>+1.0</b>	<b>+1.3</b>	<b>+1.8</b>	<b>-0.7</b>	<b>+1.0</b>	
52%	35%	51%	48%	52%	50%	48%	47%	

**Comments:** Here is the first progeny for sale from M452, a son of the \$100,000 Rangatira 13-38 bull who we sold in the 2018 sale to Peak Hill Station for \$17,000. We retained the right to use this bull and we are pleased with his offspring. Dam K834 is well bred - a daughter of H129 who was a F540 son sold to Glanworth Stud for \$13,000. Q376 is a very strong, powerful bull with a great head, excellent top-line and terrific depth and thickness. He has moderate birth weight with good calving ease making him suitable for cows or heifers. Check out his depth!

**Purchaser:**

**Price: \$**

# YEARLING ANGUS BULLS

## Lot: 40 MEADOWSLEA Q386

Birth Date: 08/10/19 ID No: 19134019386

S CHISUM 6175 (IMP USA)

**TURHAUA LOYALTY L44 (ET)**

TURHAUA D224 (ET)

MEADOWSLEA D215

**MEADOWSLEA F545**

MEADOWSLEA D056

INDEXES	
SR	HD
+\$146	+\$86

### 2020 TRANSTASMAN ANGUS CATTLE EVALUATION EBVS

CED	DTRS	GL	BW	200	400	600	MCW	Milk
-1.0	+1.4	-4.1	+3.7	+35	+66	+77	+55	+13
53%	42%	52%	73%	68%	65%	66%	64%	58%
SS	DC	CW	EMA	Rib Fat	Rump	RBY %	IMF %	
+2.5	-7.2	+34	+4.6	+0.9	+1.9	+0.2	+0.8	
58%	43%	57%	55%	60%	57%	56%	55%	

**Comments:** Here is another of these top Loyalty sons we have on offer this year. Great pedigree here with dam producing a top son sold to Robin Jameson, and a daughter who bred one of our top stud sires - K703. His maternal grandam D056 was our top price 10-year-old cow in our 2017 female sale, going to Linnburn Station at \$5,000. Q386 has terrific depth and thickness with great foot and bone and a masculine head. He has exceptional fertility traits with moderate birth weight, excellent scrotal size and very short days to calving. His fats are also in the top 20% of the breed and all this combines to give him the highest Self Replacing Index of all 190 bulls in his age group. A lot to like here!

**Purchaser:**

**Price: \$**

## Lot: 41 MEADOWSLEA Q285

Birth Date: 23/09/19 ID No: 19134019285

TURHAUA CRUMBLE Y167

**TURHAUA CRUMP E5 (ET)**

TURHAUA Q263

HIGHLANDER OF STERN

**MEADOWSLEA F637**

MEADOWSLEA 1123

INDEXES	
SR	HD
+\$91	+\$62

### 2020 TRANSTASMAN ANGUS CATTLE EVALUATION EBVS

CED	DTRS	GL	BW	200	400	600	MCW	Milk
-7.1	-7.9	-2.6	+5.2	+32	+63	+87	+88	+14
59%	51%	66%	74%	69%	67%	68%	67%	64%
SS	DC	CW	EMA	Rib Fat	Rump	RBY %	IMF %	
+1.5	-7.2	+29	+2.2	+0.6	+1.0	-0.4	+0.6	
63%	54%	63%	62%	65%	63%	63%	61%	

**Comments:** Here is the first of the Crump sons in this year's line-up. Out of a top breeding cow by Highlander of Stern who also bred lot 5 in the 2020 winter sale, sold to Melrose Station, as well as 4 other good sale bulls. Q285 has plenty of length and scale about him with a great top-line, clean shoulders, and a powerful head and jaw. He should develop into an impressive sire.

**Purchaser:**

**Price: \$**

# YEARLING ANGUS BULLS

## Lot: 42 MEADOWSLEA Q257

Birth Date: 14/09/19 ID No: 19134019257

S CHISUM 6175 (IMP USA)

**TURHAUA LOYALTY L44 (ET)**

TURHAUA D224 (ET)

MEADOWSLEA F540

**MEADOWSLEA J508**

MEADOWSLEA F596

INDEXES	
SR	HD
+\$111	+\$109

### 2020 TRANSTASMAN ANGUS CATTLE EVALUATION EBVS

CED	DTRS	GL	BW	200	400	600	MCW	Milk
<b>+4.9</b>	<b>+3.1</b>	<b>-6.2</b>	<b>+2.5</b>	<b>+36</b>	<b>+73</b>	<b>+94</b>	<b>+93</b>	<b>+16</b>
52%	43%	55%	71%	66%	63%	65%	62%	56%
SS	DC	CW	EMA	Rib Fat	Rump	RBY %	IMF %	
<b>+2.4</b>	<b>-6.5</b>	<b>+44</b>	<b>+2.7</b>	<b>+0.4</b>	<b>+1.3</b>	<b>-0.4</b>	<b>+0.5</b>	
59%	41%	56%	55%	59%	57%	55%	55%	

**Comments:** Here is another of these good Loyalty sons. This chap is a twin to lot 51. His dam is an F540 cow and she did a great job weaning them to a combined weight of 409kg! His grandam is also a great old cow who produced lot 13 in this sale. Q257 has exceptional figures for heifer mating with super low birth weight, great calving ease, and short gestation. He has strong growth with the key fertility traits of scrotal size, short days to calving and rib and rump fats all very strong. He also scanned very well for EMA and recorded the top scrotal measurement. A great pick for heifers with clean shoulders, great length and top line, and some balance about him.

**Purchaser:**

**Price: \$**

## Lot: 43 MEADOWSLEA Q389

Birth Date: 08/10/19 ID No: 19134019389

S CHISUM 6175 (IMP USA)

**TURHAUA LOYALTY L44 (ET)**

TURHAUA D224 (ET)

STERN 0713

**MEADOWSLEA G1003**

MEADOWSLEA D110

INDEXES	
SR	HD
+\$126	+\$87

### 2020 TRANSTASMAN ANGUS CATTLE EVALUATION EBVS

CED	DTRS	GL	BW	200	400	600	MCW	Milk
<b>-1.8</b>	<b>-0.5</b>	<b>-4.3</b>	<b>+4.2</b>	<b>+40</b>	<b>+71</b>	<b>+85</b>	<b>+66</b>	<b>+15</b>
54%	43%	51%	73%	67%	64%	65%	63%	57%
SS	DC	CW	EMA	Rib Fat	Rump	RBY %	IMF %	
<b>+1.6</b>	<b>-5.1</b>	<b>+42</b>	<b>+4.2</b>	<b>+1.3</b>	<b>+2.3</b>	<b>-0.1</b>	<b>+0.9</b>	
57%	41%	56%	55%	59%	57%	56%	55%	

**Comments:** Another impressive Loyalty son to follow the last with length, depth, and thickness. Dam is breeding well producing 6 in 6 so far including a good son sold to Nat Small. Nice moderate birth weight followed by good growth with those important rib and rump fats in the top 10% for the breed. This is another very good pick for heifers with good index figures. Have a close look at this chap!

**Purchaser:**

**Price: \$**

# YEARLING ANGUS BULLS

## Lot: 44 MEADOWSLEA Q201

Birth Date: 07/09/19 ID No: 19134019201

MEADOWSLEA K703

### MEADOWSLEA N157

MEADOWSLEA L086

GLANWORTH WAIGROUP 14129

### MEADOWSLEA N108

MEADOWSLEA L199

INDEXES	
SR	HD
+\$113	+\$108

### 2020 TRANSTASMAN ANGUS CATTLE EVALUATION EBVS

CED	DTRS	GL	BW	200	400	600	MCW	Milk
+6.7	-0.1	-5.7	+2.3	+32	+65	+77	+58	+19
47%	29%	34%	70%	62%	58%	58%	57%	39%
SS	DC	CW	EMA	Rib Fat	Rump	RBV %	IMF %	
+1.9	-5.6	+34	+5.3	+2.3	+2.6	-0.7	+0.5	
46%	28%	48%	41%	45%	44%	41%	39%	

**Comments:** Here is another nice clean-shouldered bull with super figures for heifer mating. He has great calving ease, low birth weight, and short gestation, all in the top 20% for the breed. Q201 is very well-balanced with a very good top-line and those easy doing fats that rank in the top 5% for the breed. Another very good pick for heifer mating.

Purchaser:

Price: \$

## Lot: 45 MEADOWSLEA Q114

Birth Date: 31/08/19 ID No: 19134019114

MEADOWSLEA F540

### MEADOWSLEA M564

MEADOWSLEA G1000

MEADOWSLEA L100

### MEADOWSLEA N508

MEADOWSLEA E466

INDEXES	
SR	HD
+\$90	+\$93

### 2020 TRANSTASMAN ANGUS CATTLE EVALUATION EBVS

CED	DTRS	GL	BW	200	400	600	MCW	Milk
+0.5	-4.7	-4.3	+3.7	+35	+69	+91	+85	+17
50%	34%	40%	70%	63%	58%	60%	56%	44%
SS	DC	CW	EMA	Rib Fat	Rump	RBV %	IMF %	
+1.6	-4.7	+40	+3.7	+2.0	+2.1	-0.6	+0.7	
47%	34%	49%	43%	47%	46%	43%	42%	

**Comments:** The first of the M564 sons in the line-up he is a good one! M564 was retained in 2018 - this is his first crop of sons and they are an outstanding line and will be a real feature of the 2021 winter sale. Q114 has a lovely clean shoulder, terrific top-line and depth of body, with a powerful back end. He scanned with the second-best EMA in the mob and has terrific rib and rump fats in the top 5% for the breed. A real prospect here!

Purchaser:

Price: \$



# YEARLING ANGUS BULLS

## Lot: 46 MEADOWSLEA Q296

Birth Date: 25/09/19 ID No: 19134019296

TURIHAUA CRUMBLE Y167

**TURIHAUA CRUMP E5 (ET)**

TURIHAUA Q263

KAHARAU 07-558

**MEADOWSLEA H211**

MEADOWSLEA 220

INDEXES	
SR	HD
+\$77	+\$70

### 2020 TRANSTASMAN ANGUS CATTLE EVALUATION EBVS

CED	DTRS	GL	BW	200	400	600	MCW	Milk
-4.0	-5.6	-4.1	+4.4	+28	+56	+81	+86	+14
57%	49%	58%	74%	69%	67%	67%	67%	64%
SS	DC	CW	EMA	Rib Fat	Rump	RBV %	IMF %	
+0.5	-6.2	+24	+3.3	+1.3	+0.9	-0.2	-0.3	
61%	54%	62%	61%	64%	62%	63%	61%	

**Comments:** To lead off this second pen of yearlings we have a top Crump son. From a productive cow family, dam has produced 6 in 6 so far and grandam managed 11 in 11. Q296 has moderate birth weight with good strong growth and the important fertility traits of short days to calving and strong rib fat. This is a classic Crump son with a great outlook, tremendous top line and powerful backend. A top pick for sure!

Purchaser:

Price: \$

## Lot: 47 MEADOWSLEA Q339

Birth Date: 30/09/19 ID No: 19134019339

RANGATIRA 13-38

**MEADOWSLEA M452**

MEADOWSLEA H104

KAHARAU 07-558

**MEADOWSLEA F731**

MEADOWSLEA 95

INDEXES	
SR	HD
+\$70	+\$73

### 2020 TRANSTASMAN ANGUS CATTLE EVALUATION EBVS

CED	DTRS	GL	BW	200	400	600	MCW	Milk
-4.1	-4.2	-3.0	+5.0	+33	+64	+87	+89	+14
50%	36%	53%	72%	66%	62%	63%	61%	53%
SS	DC	CW	EMA	Rib Fat	Rump	RBV %	IMF %	
+0.9	-3.4	+32	+2.1	+1.3	+1.3	-0.4	+0.4	
51%	39%	53%	46%	49%	48%	45%	44%	

**Comments:** Here is another nicely put-together M452 son showing the depth and thickness he is consistently leaving in his progeny. Dam is breeding well with a top daughter in our 2018 Female Sale sold at lot 6 to Harvey Hutchison. Q339 has moderate birth weight with a great backend and is the deep, thick, and square type that does so well in the hill country.

Purchaser:

Price: \$



The award-winning **yourbid** online selling platform was developed by the Giddings Family for their 2020 Angus Female Sale which was held during the Covid Lockdown on May 6th.

The system was further developed to incorporate on-farm and online bidding and used successfully for their record breaking 2020 Bull Sale on June 19th.

**yourbid** has recently been used to host two record-breaking ram sales in Scotland.

For all enquiries to use **yourbid** please contact [george@yourbid.org](mailto:george@yourbid.org)



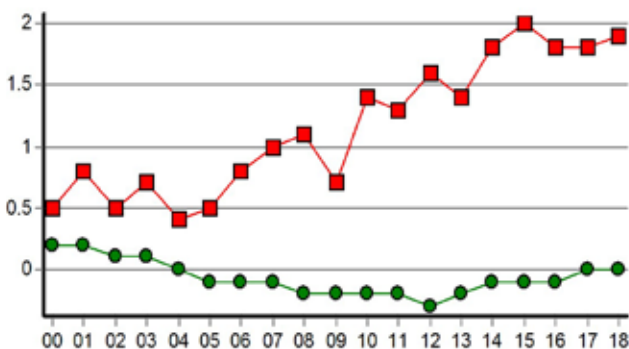
## The development of the “Meadowslea Hill Country Type”

has been the result of 25 years of selecting animals that perform the best in our hash hill country environment. Cows that can winter easily on the hill without supplements, stay in good order, calve easily and get back in calf early every year for 10 years has been the focus of our breeding programme.

Ultra-sound scanning has confirmed to us that these easy doing cattle have higher levels of Rib and Rump fat. Science has now recognised that these higher fat levels result in heifers getting in calf earlier with higher conception rates. These higher fat levels also result in increased fertility in the whole herd with earlier rebreeding and less dry cows.

**These great positive fat EBV's in the Meadowslea herd have come about simply by selecting animals that suit the Hill Country environment.**

Carcase Rib Fat (mm)



- Meadowslea herd
- Australasian herd average

Graph showing improvement in fat EBVs at Meadowslea while running the herd on hill country, compared with Australasian average. From Angus TACE report March 2020.

The average rib fat EBV of all the bulls in this catalogue is +1.5. This ranks them in the top 10% for all 2018 born calves in Australasia.

# Meadowslea Proven Herd Sires



## Meadowslea F540

Trait leader for Calving Ease, Short Days to Calving and Milk. He Ranks in the top 10% of the breed for all the Fertility and Maternal Traits measurable. He was ranked 3rd for shortest Gestation in the BLNZ Dairy Beef Progeny test in 2018. His progeny also performed very strongly, in the BLNZ Beef progeny test Cohort 2, - for both growth and Carcase Traits.



## Turihaua Crump E5

Trait leader for short days to calving. 10 years old and still going strong. Over 300 calves to date at Meadowslea. His young daughters are the top breeding cows in the herd and proving to be exceptionally fertile and early maturing - resulting in his Days to Calving figure going down to minus 10 days.

## - Breed Trait Leaders for Maternal and Fertility Traits



### **Meadowslea Meat Machine G914**

The bull we call the “Meat Machine” – Exceptional thickness and fertility traits. He is a trait leader for calving ease, his low birth weight figures are in the top 5% for the breed and his rib and rump fats are off the scale. His sons are full of meat, exceptionally easy doing and very suitable for heifer mating in the harder hill country. We can’t get enough of this bloodline and he now ranks in the top 10% for Self Replacing Index at +\$140.



### **Meadowslea K703**

A son of Meat Machine who has wonderful maternal and fertility traits and ranks in the top 10% of the breed for almost all those key traits responsible for profitability in the hill country in a self-replacing herd. His short days to calving and rib and rump fats are off the scale and all this combines to place him in the top 5% of the breed for the Self Replacing Index at +\$151. His progeny are deep, thick, early maturing and full of muscle.

## A Brand New Initiative using our original Brand Mark



Over 10,000 Meadowslea sired calves are born each year. Most are in the hill country under sustainable grass fed systems.

Clients are successfully using Meadowslea brand-marked ear tags as a step towards progeny identification. The personalized tags allow clients to identify genetics and follow performance from herd to marketplace

## A Great Opportunity for our clients

**Meadowslea offers to supply brand-marked ear tags, printed with the Client's property name, free of charge to clients, to tag all their calves.**

The tags can be linked to NAIT EID tags for further traceability.

DNA records are available for all Meadowslea sires, which will allow sire verification of progeny and traceability.

The brand-marked tags will enable Feedback of performance both in the client's herd, and the Marketplace. Easy Sale yard recognition will also lead into profitable supply to top end markets currently under development.

To take up this opportunity, meet with the Allflex rep at our Spring Bull Sale on Friday Oct 9th at 1pm and place your order there.

Be part of our Paddock to Pan Story which leverages off our sustainable genetics, which are bred in the hill country without the use of supplements or nutrient leeching fertilizer.

Our beef has a taste of its own.

This is also Your story waiting to be told.



*The*

• FAIRLIE BAKEHOUSE •

*South Canterbury*

*Meadowslea proudly supplies*

**FAIRLIE BAKEHOUSE**

*With the finest Angus beef*

*Come and taste these  
fantastic pies at our*

**BULL SALE  
FRIDAY 9th  
OCTOBER**



-EST.  2009-







**PW&A**

# LEADING WITH TRADITIONAL VALUES

FOR EXPERT KNOWLEDGE,  
KNOW HOW AND CAN DO

CONTACT YOUR LOCAL LIVESTOCK BROKER:

## **South Canterbury**

Peter Walsh • 027 561 4087

Hamish Zuppicich • 027 403 3025

Greg Shearer • 027 476 6769

Don Borlase • 027 561 4025

Wayne Andrews • 027 484 8232

Max Bensemman • 027 561 0000

Snow Buckley • 027 561 4652

Dean Cox • 027 561 5007

Andrew Scott • 022 184 3204

Spike Kendall • 021 656 290

Madison Taylor • 021 656 851

Peter Heinz • 027 208 2932

Ken Chamberlain • 027 689 7837

**[www.peterwalsh.co.nz](http://www.peterwalsh.co.nz)**

**03 687 4440 • [office@peterwalsh.co.nz](mailto:office@peterwalsh.co.nz)**



# YEARLING ANGUS BULLS

## Lot: 48 MEADOWSLEA Q284

Birth Date: 22/09/19 ID No: 19134019284

MEADOWSLEA F540

**MEADOWSLEA M564**

MEADOWSLEA G1000

RANGATIRA 13-38

**MEADOWSLEA M435**

MEADOWSLEA F748

INDEXES	
SR	HD
+\$81	+\$105

### 2020 TRANSTASMAN ANGUS CATTLE EVALUATION EBVS

CED	DTRS	GL	BW	200	400	600	MCW	Milk
<b>+3.6</b>	<b>-1.4</b>	<b>-6.1</b>	<b>+3.8</b>	<b>+35</b>	<b>+72</b>	<b>+95</b>	<b>+87</b>	<b>+20</b>
49%	35%	55%	72%	65%	60%	62%	60%	48%
SS	DC	CW	EMA	Rib Fat	Rump	RBY %	IMF %	
<b>+2.1</b>	<b>-3.6</b>	<b>+43</b>	<b>+4.5</b>	<b>+2.4</b>	<b>+2.5</b>	<b>-0.9</b>	<b>+1.6</b>	
51%	35%	52%	47%	51%	50%	47%	46%	

**Comments:** Another top M564 son with an exciting pedigree. Dam is a daughter of the \$100,000 Rangatira 13-38. The grandam F748 is a great-performing cow, having bred a stud bull sold to Glanworth Angus at \$13,000, and another bull sold to Melrose Station at \$11,000. F748 was sold in our 2020 female sale to Pikoburn Angus. Q284 has a very good balance of figures for either heifer or cow mating. Good calving ease and low birth weight followed by excellent growth. He scanned with the third-best EMA in the mob and his fats are in the top 5% of the breed. He has a great top-line and clean shoulders, with a great outlook and real quality about him. A good bull we really rate!

Purchaser:

Price: \$

## Lot: 49 MEADOWSLEA Q282

Birth Date: 22/09/19 ID No: 19134019282

TURHAUA CRUMBLE Y167

**TURHAUA CRUMP E5 (ET)**

TURHAUA Q263

KAHARAU CLARION 844

**MEADOWSLEA H163**

MEADOWSLEA D208

INDEXES	
SR	HD
+\$91	+\$76

### 2020 TRANSTASMAN ANGUS CATTLE EVALUATION EBVS

CED	DTRS	GL	BW	200	400	600	MCW	Milk
<b>-0.3</b>	<b>-2.3</b>	<b>-6.0</b>	<b>+2.0</b>	<b>+24</b>	<b>+48</b>	<b>+64</b>	<b>+72</b>	<b>+15</b>
58%	50%	61%	74%	69%	67%	67%	66%	63%
SS	DC	CW	EMA	Rib Fat	Rump	RBY %	IMF %	
<b>+0.6</b>	<b>-8.0</b>	<b>+15</b>	<b>+2.8</b>	<b>+2.4</b>	<b>+1.7</b>	<b>-0.6</b>	<b>-0.2</b>	
62%	55%	63%	62%	65%	62%	63%	61%	

**Comments:** Another lovely compact Crump son. Great heifer mating figures once again with super low birth weight and short gestation. Thick, deep, square, and with a good back-end and the strong fertility traits with short days to calving and fats in the top 5% for the breed once again. Dam breeding well. A top pick of the Crump bloodline.

Purchaser:

Price: \$

# YEARLING ANGUS BULLS

## Lot: 50 MEADOWSLEA Q251

Birth Date: 18/09/19 ID No: 19134019251

TURIROA 14830 (ET)

**MEADOWSLEA N141**

MEADOWSLEA K700

GOLDWYN 017

**MEADOWSLEA L323**

MEADOWSLEA G860

INDEXES	
SR	HD
+\$108	+\$100

### 2020 TRANSTASMAN ANGUS CATTLE EVALUATION EBVS

CED	DTRS	GL	BW	200	400	600	MCW	Milk
<b>+1.9</b>	<b>+0.3</b>	<b>-5.3</b>	<b>+3.6</b>	<b>+36</b>	<b>+71</b>	<b>+95</b>	<b>+89</b>	<b>+15</b>
47%	34%	40%	70%	63%	59%	60%	59%	45%
SS	DC	CW	EMA	Rib Fat	Rump	RBV %	IMF %	
<b>+2.1</b>	<b>-5.5</b>	<b>+40</b>	<b>+2.9</b>	<b>+2.2</b>	<b>+2.7</b>	<b>-0.4</b>	<b>+0.4</b>	
49%	34%	50%	44%	48%	47%	44%	43%	

**Comments:** The first son offered of N141, the top priced bull in our 2019 sale sold to Waimara Angus at \$22,000. Great numbers here for heifer or cow mating with calving ease and low birth weight followed by exceptional growth. Q251 shows the tremendous depth, thickness, and backend we would expect this sire to leave.

Purchaser:

Price: \$

## Lot: 51 MEADOWSLEA Q224

Birth Date: 14/09/19 ID No: 19134019224

S CHISUM 6175 (IMP USA)

**TURIHAUA LOYALTY L44 (ET)**

TURIHAUA D224 (ET)

MEADOWSLEA F540

**MEADOWSLEA J508**

MEADOWSLEA F596

INDEXES	
SR	HD
+\$107	+\$98

### 2020 TRANSTASMAN ANGUS CATTLE EVALUATION EBVS

CED	DTRS	GL	BW	200	400	600	MCW	Milk
<b>+1.2</b>	<b>+1.3</b>	<b>-5.5</b>	<b>+3.9</b>	<b>+37</b>	<b>+74</b>	<b>+97</b>	<b>+99</b>	<b>+15</b>
52%	43%	55%	71%	66%	63%	65%	62%	56%
SS	DC	CW	EMA	Rib Fat	Rump	RBV %	IMF %	
<b>+2.4</b>	<b>-6.5</b>	<b>+45</b>	<b>+2.6</b>	<b>+0.3</b>	<b>+1.2</b>	<b>-0.3</b>	<b>+0.5</b>	
59%	41%	56%	55%	59%	57%	55%	55%	

**Comments:** Another of these impressive Loyalty sons, this chap is a twin brother to lot 42. Dam is a top performing F540 cow. His grandam is also breeding well- she is the dam of lot 13 in this sale. Q224 has great heifer mating figures like his brother. Some real stretch, growth, and power about this fellow with a great top-line, He should grow out into a really good sire.

Purchaser:

Price: \$

# YEARLING ANGUS BULLS

## Lot: 52 MEADOWSLEA Q400

Birth Date: 11/10/19 ID No: 19134019400

TURIHAUA CRUMP E5 (ET)

**MEADOWSLEA K811**

MEADOWSLEA E399

RED OAK 378

**MEADOWSLEA K965**

MEADOWSLEA 244

INDEXES	
SR	HD
+\$77	+\$87

### 2020 TRANSTASMAN ANGUS CATTLE EVALUATION EBVS

CED	DTRS	GL	BW	200	400	600	MCW	Milk
+1.0	-2.9	-5.0	+4.1	+30	+60	+76	+82	+13
50%	36%	41%	72%	65%	62%	63%	61%	50%
SS	DC	CW	EMA	Rib Fat	Rump	RBV %	IMF %	
+1.5	-3.6	+27	+2.2	+1.8	+1.9	-0.7	+0.7	
53%	39%	53%	48%	52%	50%	49%	47%	

**Comments:** Here is a Crump grandson with great length and top-line. Nice low birthweight with calving ease and clean shoulders as well those strong rib and rump fats once again.

Purchaser:

Price: \$

## Lot: 53 MEADOWSLEA Q364

Birth Date: 02/10/19 ID No: 19134019364

MEADOWSLEA MEAT MACHINE G914

**MEADOWSLEA N362**

MEADOWSLEA B679

TURIROA 14830 (ET)

**MEADOWSLEA N242**

MEADOWSLEA F719

INDEXES	
SR	HD
+\$85	+\$88

### 2020 TRANSTASMAN ANGUS CATTLE EVALUATION EBVS

CED	DTRS	GL	BW	200	400	600	MCW	Milk
+0.5	-4.0	-3.4	+5.4	+32	+60	+81	+82	+12
49%	33%	35%	69%	61%	57%	58%	55%	43%
SS	DC	CW	EMA	Rib Fat	Rump	RBV %	IMF %	
+1.9	-3.4	+29	+2.6	+2.0	+2.6	+0.1	-0.3	
43%	30%	48%	41%	45%	43%	41%	40%	

**Comments:** Here is another bull bred by a yearling and out of a 2-year heifer. Grandam is a great old cow who has produced 8 in 8, and all good calves. Q364 has a slightly bigger birth weight but with his very clean shoulders and calving ease figures is still a heifer mating option. An upstanding bull with very strong rib and rump fat in the top 5% of the breed.

Purchaser:

Price: \$

**Carrfields**

Livestock

# WE HAVE YOUR STUD STOCK NEEDS COVERED



**Neville Clark**  
Auctioneer - 027 598 6537



**Callum Dunnett**  
Stud Stock Agent - 027 587 0131



**Andrew Holt**  
Auctioneer - 027 496 3311



**Bruce Orr**  
Stud Stock Agent - 027 4922 122



**Roger Keach**  
Stud Stock Agent - 027 417 8641



**Tom Suttor**  
Stud Stock Agent - 027 616 4504

# YEARLING ANGUS BULLS

## Lot: 54 MEADOWSLEA Q322

Birth Date: 28/09/19 ID No: 19134019322

GLANWORTH WAIGROUP 0816

**MEADOWSLEA MEAT MACHINE G914**

MEADOWSLEA D101

MEADOWSLEA K886

**MEADOWSLEA M1013**

MEADOWSLEA K903

INDEXES	
SR	HD
<b>+\$131</b>	<b>+\$105</b>

### 2020 TRANSTASMAN ANGUS CATTLE EVALUATION EBVS

CED	DTRS	GL	BW	200	400	600	MCW	Milk
<b>+5.6</b>	<b>+0.8</b>	<b>-5.4</b>	<b>+3.5</b>	<b>+31</b>	<b>+64</b>	<b>+80</b>	<b>+65</b>	<b>+14</b>
51%	38%	46%	73%	67%	64%	65%	64%	55%
SS	DC	CW	EMA	Rib Fat	Rump	RBV %	IMF %	
<b>+2.1</b>	<b>-6.6</b>	<b>+30</b>	<b>+3.6</b>	<b>+2.3</b>	<b>+2.5</b>	<b>+0.4</b>	<b>-0.8</b>	
56%	42%	55%	53%	57%	55%	53%	52%	

**Comments:** Here is a direct son of Meat Machine, out of a cow going back to Crump. Terrific heifer mating figures with good calving ease, short gestation, and low birth weight. Strong fertility traits across the page with short days to calving and strong rib and rump fats - all combining to give a very strong index figure which is in the top 10% of the breed.

Purchaser:

Price: \$

## Lot: 55 MEADOWSLEA Q306

Birth Date: 26/09/19 ID No: 19134019306

GLANWORTH WAIGROUP 0816

**MEADOWSLEA MEAT MACHINE G914**

MEADOWSLEA D101

GOLDWYN 017

**MEADOWSLEA J402**

MEADOWSLEA G919

INDEXES	
SR	HD
<b>+\$116</b>	<b>+\$102</b>

### 2020 TRANSTASMAN ANGUS CATTLE EVALUATION EBVS

CED	DTRS	GL	BW	200	400	600	MCW	Milk
<b>+5.0</b>	<b>-1.1</b>	<b>-5.1</b>	<b>+3.5</b>	<b>+29</b>	<b>+59</b>	<b>+76</b>	<b>+70</b>	<b>+13</b>
53%	41%	48%	74%	68%	65%	66%	65%	58%
SS	DC	CW	EMA	Rib Fat	Rump	RBV %	IMF %	
<b>+1.9</b>	<b>-6.3</b>	<b>+27</b>	<b>+2.6</b>	<b>+1.7</b>	<b>+2.3</b>	<b>+0.2</b>	<b>-0.2</b>	
59%	46%	56%	54%	57%	56%	54%	54%	

**Comments:** Another Meat Machine son to follow the last, this time out of a cow by Goldwyn 17. Q306 is very strong in the maternal and fertility traits with low birth weight and very good calving ease along with short gestation. He has short days to calving and those rib and rump fats in the top 5% of the breed once again. Thick, square type with a good backend.

Purchaser:

Price: \$

# YEARLING ANGUS BULLS

## Lot: 56 MEADOWSLEA Q110

Birth Date: 29/08/19 ID No: 19134019110

MEADOWSLEA K703

**MEADOWSLEA N157**

MEADOWSLEA L086

GOLDWYN 017

**MEADOWSLEA N475**

MEADOWSLEA J510

INDEXES	
SR	HD
+\$115	+\$104

### 2020 TRANSTASMAN ANGUS CATTLE EVALUATION EBVS

CED	DTRS	GL	BW	200	400	600	MCW	Milk
+5.0	-0.6	-5.2	+2.0	+32	+67	+82	+69	+18
48%	32%	36%	70%	62%	58%	60%	58%	41%
SS	DC	CW	EMA	Rib Fat	Rump	RBV %	IMF %	
+2.2	-6.5	+37	+4.1	+2.1	+2.7	-1.1	+1.3	
47%	31%	49%	42%	46%	45%	42%	40%	

**Comments:** Yet another bull by a yearling sire and out of a good young 2-year heifer. Q110 has excellent heifer mating figures with an exceptionally low birth weight, good calving ease, and short gestation. He has very strong fertility traits with good scrotal size, short days to calving and terrific rib and rump figures all in the top 5% for the breed. An upstanding bull with a good outlook.

**Purchaser:**

**Price: \$**

## Lot: 57 MEADOWSLEA Q410

Birth Date: 14/10/19 ID No: 19134019410

MEADOWSLEA F540

**MEADOWSLEA M564**

MEADOWSLEA G1000

MEADOWSLEA J558

**MEADOWSLEA L239**

MEADOWSLEA E350

INDEXES	
SR	HD
+\$106	+\$86

### 2020 TRANSTASMAN ANGUS CATTLE EVALUATION EBVS

CED	DTRS	GL	BW	200	400	600	MCW	Milk
-2.6	-5.5	-4.3	+5.3	+38	+73	+98	+103	+16
50%	35%	43%	72%	65%	60%	61%	60%	48%
SS	DC	CW	EMA	Rib Fat	Rump	RBV %	IMF %	
+2.1	-7.3	+43	+4.7	+1.5	+1.6	+0.1	+0.2	
50%	37%	51%	45%	49%	48%	45%	44%	

**Comments:** Here is another of these impressive M564 sons with a very strong pedigree. Dam L239 goes back to Crump so this is the F540 x Crump cross that works so well for us. L239 is breeding well with a yearling son sold to Reece Whitelock in 2018. Grandam E350 was our top old cow in the 2019 female sale - sold Pikoburn Angus - and she shows up in the pedigrees of many of our top cattle. Strong fertility traits once again with good scrotal size as well as short days to calving, and rib and rump fats in the top 10% of the breed. Quality and real potential here - a great top-line, clean shoulder, and a meaty backend.

**Purchaser:**

**Price: \$**

# YEARLING ANGUS BULLS

## Lot: 58 MEADOWSLEA Q350

Birth Date: 01/10/19 ID No: 19134019350

S CHISUM 6175 (IMP USA)

**TURHAUA LOYALTY L44 (ET)**

TURHAUA D224 (ET)

TURHAUA CRUMP E5 (ET)

**MEADOWSLEA H246**

MEADOWSLEA A338

INDEXES	
SR	HD
+\$102	+\$87

### 2020 TRANSTASMAN ANGUS CATTLE EVALUATION EBVS

CED	DTRS	GL	BW	200	400	600	MCW	Milk
<b>-0.1</b>	<b>+0.6</b>	<b>-4.6</b>	<b>+3.3</b>	<b>+32</b>	<b>+63</b>	<b>+81</b>	<b>+72</b>	<b>+14</b>
53%	44%	54%	73%	67%	65%	66%	63%	56%
SS	DC	CW	EMA	Rib Fat	Rump	RBY %	IMF %	
<b>+1.4</b>	<b>-4.9</b>	<b>+32</b>	<b>+2.9</b>	<b>+0.7</b>	<b>+1.1</b>	<b>-0.1</b>	<b>+0.2</b>	
59%	42%	56%	55%	58%	56%	55%	54%	

**Comments:** Another outstanding Loyalty son to lead in this next pen. Dam is a very high-performing cow by Crump with one son retained (L256), another sold at lot 9 in the 2000 Winter Sale to Bellview, and previous sons sold at \$11,000 to Ben McLauchlan and Waewaepa Station. Q350 has great heifer mating traits with low birthweight followed by very good growth. He has terrific length and depth to him, with powerful bone and a strong head. Quality here again and worth a close look with a pedigree like this!

Purchaser:

Price: \$

## Lot: 59 MEADOWSLEA Q388

Birth Date: 08/10/19 ID No: 19134019388

S CHISUM 6175 (IMP USA)

**TURHAUA LOYALTY L44 (ET)**

TURHAUA D224 (ET)

MEADOWSLEA F540

**MEADOWSLEA K813**

MEADOWSLEA E311

INDEXES	
SR	HD
+\$114	+\$88

### 2020 TRANSTASMAN ANGUS CATTLE EVALUATION EBVS

CED	DTRS	GL	BW	200	400	600	MCW	Milk
<b>-2.5</b>	<b>-1.2</b>	<b>-4.3</b>	<b>+5.1</b>	<b>+41</b>	<b>+78</b>	<b>+99</b>	<b>+86</b>	<b>+16</b>
54%	43%	54%	73%	67%	64%	65%	63%	56%
SS	DC	CW	EMA	Rib Fat	Rump	RBY %	IMF %	
<b>+2.1</b>	<b>-5.5</b>	<b>+47</b>	<b>+3.1</b>	<b>-0.3</b>	<b>+0.7</b>	<b>+0.0</b>	<b>+0.9</b>	
57%	41%	56%	55%	59%	57%	55%	55%	

**Comments:** Another Loyalty to follow and of a similar type. Out of a cow by F540 who is breeding well. Q388 has some size and scale about him showing up with a bigger 600 day growth EBV. He has clean shoulders, a great top and depth of body, with a strong coat.

Purchaser:

Price: \$

# YEARLING ANGUS BULLS

## Lot: 60 MEADOWSLEA Q323

Birth Date: 28/09/19 ID No: 19134019323

S CHISUM 6175 (IMP USA)

**TURIHAUA LOYALTY L44 (ET)**

TURIHAUA D224 (ET)

KAHARAU 07-558

**MEADOWSLEA F642**

MEADOWSLEA C851

INDEXES	
SR	HD
+\$92	+\$77

### 2020 TRANSTASMAN ANGUS CATTLE EVALUATION EBVS

CED	DTRS	GL	BW	200	400	600	MCW	Milk
<b>-3.3</b>	<b>-0.4</b>	<b>-2.7</b>	<b>+4.5</b>	<b>+33</b>	<b>+63</b>	<b>+84</b>	<b>+80</b>	<b>+11</b>
53%	44%	53%	74%	68%	65%	66%	64%	58%
SS	DC	CW	EMA	Rib Fat	Rump	RBY %	IMF %	
<b>+1.6</b>	<b>-3.7</b>	<b>+35</b>	<b>+3.2</b>	<b>+0.3</b>	<b>+1.0</b>	<b>+0.3</b>	<b>+0.0</b>	
59%	41%	57%	55%	59%	57%	56%	55%	

**Comments:** These Loyalty sons are certainly consistent types. Dam F642 is a great old cow who produced 8 from 8, including 3 good sale bulls and 3 daughters retained. She was sold in our 2020 female sale to Pikoburn Angus. Q323 has clean shoulders, a good top line with a great coat and good back end.

**Purchaser:**

**Price: \$**

## Lot: 61 MEADOWSLEA Q278

Birth Date: 21/09/19 ID No: 19134019278

MEADOWSLEA J514

**MEADOWSLEA L226**

MEADOWSLEA H104

RED OAK 378

**MEADOWSLEA L228**

MEADOWSLEA E456

INDEXES	
SR	HD
+\$89	+\$103

### 2020 TRANSTASMAN ANGUS CATTLE EVALUATION EBVS

CED	DTRS	GL	BW	200	400	600	MCW	Milk
<b>+2.7</b>	<b>-4.9</b>	<b>-4.9</b>	<b>+4.2</b>	<b>+38</b>	<b>+76</b>	<b>+100</b>	<b>+103</b>	<b>+15</b>
49%	34%	39%	73%	66%	63%	64%	62%	48%
SS	DC	CW	EMA	Rib Fat	Rump	RBY %	IMF %	
<b>+2.0</b>	<b>-4.8</b>	<b>+42</b>	<b>+2.2</b>	<b>+0.5</b>	<b>+0.4</b>	<b>-0.4</b>	<b>+0.3</b>	
54%	35%	53%	49%	52%	51%	48%	48%	

**Comments:** Here is a quality L226 son with a good pedigree. Grandam bred lot 8 in this year's sale, sold to Peak Hill Station at \$14,000, as well as 2 other top sale bulls, and she was sold for stud to Paul Revell in the 2019 female sale. Very clean shoulders and terrific top-line, he is very correct and upstanding. Great heifer mating figures too with low birth weight and good calving ease followed by very good growth.

**Purchaser:**

**Price: \$**



# YEARLING ANGUS BULLS

## Lot: 62 MEADOWSLEA Q476

Birth Date: 03/11/19 ID No: 19134019476

TURIHAUA CRUMP E5 (ET)

### MEADOWSLEA K811

MEADOWSLEA E399

MEADOWSLEA D098

### MEADOWSLEA F536

MEADOWSLEA D258

INDEXES	
SR	HD
+\$95	+\$79

### 2020 TRANSTASMAN ANGUS CATTLE EVALUATION EBVS

CED	DTRS	GL	BW	200	400	600	MCW	Milk
-2.6	-6.3	-3.2	+4.7	+34	+66	+88	+91	+14
51%	38%	43%	73%	66%	63%	64%	62%	53%
SS	DC	CW	EMA	Rib Fat	Rump	RBY %	IMF %	
+1.7	-6.6	+36	+3.7	+0.8	+1.3	-0.3	+0.4	
54%	41%	53%	49%	53%	52%	50%	48%	

**Comments:** A deep-bodied, square type in the form of this Crump grandson. Out of a good breeding cow who has another very good son at lot 14 in this sale, and also produced a previous son sold to Rocky point Station at \$10,000. Grandam gave us 9 in 9. Q476 has moderate birth weight, good growth, short days to calving and good fats. He has a very good backend with a good head and tidy top-line. Potential about this bull.

Purchaser:

Price: \$

## Lot: 63 MEADOWSLEA Q208

Birth Date: 10/09/19 ID No: 19134019208

MEADOWSLEA D227

### MEADOWSLEA F540

MEADOWSLEA D042

MEADOWSLEA F540

### MEADOWSLEA J555

MEADOWSLEA F656

INDEXES	
SR	HD
+\$107	+\$101

### 2020 TRANSTASMAN ANGUS CATTLE EVALUATION EBVS

CED	DTRS	GL	BW	200	400	600	MCW	Milk
+4.9	-1.1	-9.0	+2.9	+30	+67	+80	+68	+23
61%	52%	86%	78%	73%	72%	73%	73%	68%
SS	DC	CW	EMA	Rib Fat	Rump	RBY %	IMF %	
+2.5	-7.7	+36	+2.5	+2.4	+3.2	-1.4	+1.2	
69%	58%	67%	66%	70%	67%	67%	66%	

**Comments:** Here is a direct son of F540. Dam has bred sons sold to Gawler Downs and Annandale. Q208 has super low birth weight, short gestation in the top 2% of the breed, and good calving ease. He has terrific fertility with good scrotal size and those short days to calving and positive rib and rump fats in the top 5% for the breed. A moderate-framed, clean-shouldered bull with a good top-line.

Purchaser:

Price: \$

# BALE UP A BANGIN' DEAL



 **NEW HOLLAND**  
AGRICULTURE

**TRUE BLUE**

Whether you're after a small square, big square, round or combi baler; New Holland has you covered. Talk to your local New Holland dealer today to lock in for delivery this spring and summer.



**LET'S GET IT DONE THIS SPRING.**

**0%\***  
LOW DEPOSIT FINANCE

**3 YEAR TERM**  
WITH 3 ANNUAL PAYMENTS

**3 YEAR/30,000**  
BALE PREMIER WARRANTY

**PROMOTION EXTENDED**

  [Newholland.co/nz](http://Newholland.co/nz)

\*Promotion only applies to new baler orders taken between 1st May 2019 and 31st December 2019. Units must be delivered in 2019. Finance package provided by UDC and based on 25% deposit, GST back in 3rd month then 3 equal annual payments every 12 months from delivery date. Standard lending criteria, fees and conditions apply.

**JOHNSON TRACTORS**  
**GLUYAS**  
ASHBURTON - TIMARU - OAMARU

252 Hilton Highway, Washdyke, Timaru  
Ph (03) 688 1133 or SI 0800 58 28 28  
[www.johnsongluyas.co.nz](http://www.johnsongluyas.co.nz)

**de lage landen**  
BANKREKENING IN TIJDERE

19GLJ005

# YEARLING ANGUS BULLS

## Lot: 64 MEADOWSLEA Q148

Birth Date: 17/09/19 ID No: 19134019148

MEADOWSLEA MEAT MACHINE G914

### MEADOWSLEA K703

MEADOWSLEA H126

GOLDWYN 017

### MEADOWSLEA K012

MEADOWSLEA B716

INDEXES	
SR	HD
<b>+\$114</b>	<b>+\$99</b>

### 2020 TRANSTASMAN ANGUS CATTLE EVALUATION EBVS

CED	DTRS	GL	BW	200	400	600	MCW	Milk
<b>+3.9</b>	<b>-0.8</b>	<b>-4.8</b>	<b>+2.9</b>	<b>+31</b>	<b>+61</b>	<b>+78</b>	<b>+75</b>	<b>+16</b>
52%	38%	43%	74%	68%	65%	66%	64%	53%
SS	DC	CW	EMA	Rib Fat	Rump	RBY %	IMF %	
<b>+2.5</b>	<b>-7.4</b>	<b>+28</b>	<b>+3.9</b>	<b>+2.6</b>	<b>+3.1</b>	<b>-0.5</b>	<b>+0.5</b>	
56%	40%	55%	52%	55%	54%	51%	51%	

**Comments:** Here is the first of the K703 sons and he is really true to type, this was a good cross with a Goldwyn 17 cow. Great heifer mating figures once again with calving ease, short gestation and low birthweight. Terrific fertility here as well with short days to calving, good scrotal size and rib and rump fats at the very top end of the breed. Deep-bodied K703 type, with a good clean shoulder to him.

Purchaser:

Price: \$

## Lot: 65 MEADOWSLEA Q384

Birth Date: 08/10/19 ID No: 19134019384

MEADOWSLEA F540

### MEADOWSLEA M564

MEADOWSLEA G1000

TURHAUA CRUMP E5 (ET)

### MEADOWSLEA M617

MEADOWSLEA G1059

INDEXES	
SR	HD
<b>+\$106</b>	<b>+\$94</b>

### 2020 TRANSTASMAN ANGUS CATTLE EVALUATION EBVS

CED	DTRS	GL	BW	200	400	600	MCW	Milk
<b>+0.4</b>	<b>-4.1</b>	<b>-5.3</b>	<b>+3.9</b>	<b>+36</b>	<b>+73</b>	<b>+95</b>	<b>+88</b>	<b>+20</b>
52%	38%	47%	72%	65%	61%	61%	60%	49%
SS	DC	CW	EMA	Rib Fat	Rump	RBY %	IMF %	
<b>+2.2</b>	<b>-7.2</b>	<b>+42</b>	<b>+5.0</b>	<b>+2.4</b>	<b>+2.2</b>	<b>-0.6</b>	<b>+0.9</b>	
52%	39%	52%	48%	52%	50%	49%	47%	

**Comments:** Another of these clean-cut M564 sons out of a Crump cow which we expect to be a very good cross. Q384 has a low birthweight followed by excellent growth. He scanned exceptionally well with the top EMA of the group. He has a very tidy shoulder, great width across the top, and that great backend the M564 sire leaves on all his progeny. Worth a good look.

Purchaser:

Price: \$

# YEARLING ANGUS BULLS

## Lot: 66 MEADOWSLEA Q363

Birth Date: 02/10/19 ID No: 19134019363

S CHISUM 6175 (IMP USA)

**TURIHAUA LOYALTY L44 (ET)**

TURIHAUA D224 (ET)

MEADOWSLEA F540

**MEADOWSLEA L199**

MEADOWSLEA C1047

INDEXES	
SR	HD
<b>+\$130</b>	<b>+\$100</b>

### 2020 TRANSTASMAN ANGUS CATTLE EVALUATION EBVS

CED	DTRS	GL	BW	200	400	600	MCW	Milk
<b>+3.2</b>	<b>+2.8</b>	<b>-6.0</b>	<b>+2.6</b>	<b>+34</b>	<b>+68</b>	<b>+80</b>	<b>+51</b>	<b>+17</b>
53%	43%	52%	73%	67%	64%	64%	63%	55%
SS	DC	CW	EMA	Rib Fat	Rump	RBY %	IMF %	
<b>+2.0</b>	<b>-5.2</b>	<b>+36</b>	<b>+4.4</b>	<b>+0.8</b>	<b>+1.6</b>	<b>+0.0</b>	<b>+0.7</b>	
58%	41%	56%	54%	58%	56%	55%	54%	

**Comments:** Another deep-bodied Loyalty son with a good top-line. Dam is a very good F540 cow who bred lot 17 in the 2020 winter sale sold to Braemar Station - this bull is bred the same way. Grandam also bred very well with her daughter F801 being the top price cow in the 2020 sale - sold to Australia at \$5500. Marvellous heifer mating figures here with a very low birthweight, good calving ease and short gestation followed by strong growth.

**Purchaser:**

**Price: \$**

## Lot: 67 MEADOWSLEA Q359

Birth Date: 02/10/19 ID No: 19134019359

RANGATIRA 13-38

**MEADOWSLEA M452**

MEADOWSLEA H104

RATANUI LAD 21

**MEADOWSLEA L284**

MEADOWSLEA D183

INDEXES	
SR	HD
<b>+\$78</b>	<b>+\$78</b>

### 2020 TRANSTASMAN ANGUS CATTLE EVALUATION EBVS

CED	DTRS	GL	BW	200	400	600	MCW	Milk
<b>-4.3</b>	<b>-6.8</b>	<b>-3.7</b>	<b>+6.2</b>	<b>+39</b>	<b>+73</b>	<b>+101</b>	<b>+97</b>	<b>+15</b>
49%	35%	50%	71%	64%	60%	61%	60%	47%
SS	DC	CW	EMA	Rib Fat	Rump	RBY %	IMF %	
<b>+1.6</b>	<b>-4.2</b>	<b>+38</b>	<b>+2.0</b>	<b>+1.8</b>	<b>+1.6</b>	<b>-0.7</b>	<b>+0.9</b>	
49%	34%	51%	46%	50%	49%	46%	45%	

**Comments:** An M452 son with plenty of growth and stretch about him, ample depth of body, and a good backend.

**Purchaser:**

**Price: \$**

# YEARLING ANGUS BULLS

## Lot: 68 MEADOWSLEA Q528

Birth Date: 10/10/19 ID No: 19134019528

TURIHAUA CRUMP E5 (ET)

**MEADOWSLEA K811**

MEADOWSLEA E399

MEADOWSLEA 159

**MEADOWSLEA F570**

MEADOWSLEA 267

INDEXES	
SR	HD
+\$82	+\$89

### 2020 TRANSTASMAN ANGUS CATTLE EVALUATION EBVS

CED	DTRS	GL	BW	200	400	600	MCW	Milk
<b>+1.1</b>	<b>-3.9</b>	<b>-4.7</b>	<b>+4.0</b>	<b>+29</b>	<b>+57</b>	<b>+79</b>	<b>+78</b>	<b>+15</b>
46%	38%	53%	63%	64%	62%	62%	59%	53%
SS	DC	CW	EMA	Rib Fat	Rump	RBY %	IMF %	
<b>+2.1</b>	<b>-4.7</b>	<b>+27</b>	<b>+2.8</b>	<b>+1.5</b>	<b>+1.7</b>	<b>+0.0</b>	<b>+0.0</b>	
53%	41%	53%	50%	54%	52%	51%	49%	

**Comments:** Here is a grandson of Crump, out of a good old 10-year-old cow who we sold in the 2020 female sale. Q528 has a nice low birth weight with calving ease, good scrotal size and very good fats in the top 5% of the breed. A bigger-framed bull with plenty of length and a clean shoulder suitable for heifer mating.

Purchaser:

Price: \$

## Lot: 69 MEADOWSLEA Q521

Birth Date: 15/10/19 ID No: 19134019521

MEADOWSLEA D227

**MEADOWSLEA F540**

MEADOWSLEA D042

MEADOWSLEA F548

**MEADOWSLEA H152**

MEADOWSLEA 1123

INDEXES	
SR	HD
+\$83	+\$82

### 2020 TRANSTASMAN ANGUS CATTLE EVALUATION EBVS

CED	DTRS	GL	BW	200	400	600	MCW	Milk
<b>-0.5</b>	<b>-9.0</b>	<b>-5.3</b>	<b>+4.5</b>	<b>+31</b>	<b>+65</b>	<b>+79</b>	<b>+69</b>	<b>+21</b>
57%	45%	57%	74%	69%	66%	67%	66%	62%
SS	DC	CW	EMA	Rib Fat	Rump	RBY %	IMF %	
<b>+2.0</b>	<b>-5.6</b>	<b>+36</b>	<b>+1.9</b>	<b>+1.4</b>	<b>+2.2</b>	<b>-1.1</b>	<b>+1.3</b>	
61%	51%	59%	58%	61%	59%	58%	57%	

**Comments:** A classic F540 to lead in this pen of moderate-framed bulls. From a very good maternal family, dam has done 6 in 6 so far and grandam managed 11 in 11 including 3 very good sale bulls. Q521 is a moderate birth weight bull with very good scrotal size and short days to calving. He has strong rib and rump fats and a very good milk figure. Thick, deep and square with a clean shoulder and a meaty back end. A good pick here!

Purchaser:

Price: \$

# YEARLING ANGUS BULLS

## Lot: 70 MEADOWSLEA Q220

Birth Date: 13/09/19 ID No: 19134019220

RED OAK 378

**MEADOWSLEA K904**

MEADOWSLEA B667

GLANWORTH WAIGROUP 0816

**MEADOWSLEA G860**

MEADOWSLEA B716

INDEXES	
SR	HD
+\$100	+\$102

### 2020 TRANSTASMAN ANGUS CATTLE EVALUATION EBVS

CED	DTRS	GL	BW	200	400	600	MCW	Milk
<b>+5.3</b>	<b>+3.1</b>	<b>-5.1</b>	<b>+2.8</b>	<b>+31</b>	<b>+61</b>	<b>+76</b>	<b>+67</b>	<b>+15</b>
52%	40%	83%	73%	67%	64%	64%	64%	58%
SS	DC	CW	EMA	Rib Fat	Rump	RBV %	IMF %	
<b>+2.3</b>	<b>-4.1</b>	<b>+29</b>	<b>+1.3</b>	<b>+3.5</b>	<b>+3.7</b>	<b>-0.9</b>	<b>+0.5</b>	
58%	43%	56%	54%	58%	56%	55%	54%	

**Comments:** Clean shoulders and a great top-line on this fellow. He is ideal for heifer mating with low birth weight, good calving ease, and short gestation. Very strong scrotal size and rib and rump fats that are off the scale. Note some white.

Purchaser:

Price: \$

## Lot: 71 MEADOWSLEA Q517

Birth Date: 22/10/19 ID No: 19134019517

MEADOWSLEA F540

**MEADOWSLEA L256**

MEADOWSLEA H246

MEADOWSLEA K018

**MEADOWSLEA M410**

MEADOWSLEA K743

INDEXES	
SR	HD
+\$92	+\$90

### 2020 TRANSTASMAN ANGUS CATTLE EVALUATION EBVS

CED	DTRS	GL	BW	200	400	600	MCW	Milk
<b>-0.4</b>	<b>-3.4</b>	<b>-6.1</b>	<b>+4.3</b>	<b>+35</b>	<b>+74</b>	<b>+96</b>	<b>+93</b>	<b>+20</b>
49%	35%	42%	71%	63%	60%	62%	60%	46%
SS	DC	CW	EMA	Rib Fat	Rump	RBV %	IMF %	
<b>+1.9</b>	<b>-6.5</b>	<b>+41</b>	<b>+1.8</b>	<b>+1.9</b>	<b>+2.5</b>	<b>-1.4</b>	<b>+1.4</b>	
50%	35%	51%	46%	50%	49%	46%	44%	

**Comments:** Very deep and thick bull here, with a great middle and a top back end. His dam is breeding well with her first calf also a very thick, meaty bull at lot 8 in this sale. Q517 has moderate birth weight and short gestation. He is strong in the fertility traits with short days to calving and has strong rib and rump fats in the top 5% of the breed.

Purchaser:

Price: \$

# YEARLING ANGUS BULLS

## Lot: 72 MEADOWSLEA Q344

Birth Date: 01/10/19 ID No: 19134019344

TE MANIA INFINITY 04 379

### GOLDWYN 017

GOLDWYN 05-595

MEADOWSLEA K886

### MEADOWSLEA M1025

MEADOWSLEA K971

INDEXES	
SR	HD
+\$122	+\$83

### 2020 TRANSTASMAN ANGUS CATTLE EVALUATION EBVS

CED	DTRS	GL	BW	200	400	600	MCW	Milk
-1.1	-3.0	-4.8	+3.3	+31	+65	+79	+69	+14
53%	44%	52%	72%	66%	63%	65%	64%	57%
SS	DC	CW	EMA	Rib Fat	Rump	RBY %	IMF %	
+2.1	-7.7	+32	+0.7	+1.2	+1.8	-1.1	+1.8	
57%	45%	55%	54%	57%	56%	54%	53%	

**Comments:** A Goldwyn 17 son here who is really thick. His figures show low birthweight with short gestation followed by good growth. Once again he is strong in those important fertility traits of short days to calving, scrotal size and good fat covers. A good compact type of bull with a strong hindquarter.

Purchaser:

Price: \$

## Lot: 73 MEADOWSLEA Q512

Birth Date: 26/10/19 ID No: 19134019512

RANGATIRA 13-38

### MEADOWSLEA M452

MEADOWSLEA H104

KAHARAU 07-558

### MEADOWSLEA J678

MEADOWSLEA 179

INDEXES	
SR	HD
+\$96	+\$82

### 2020 TRANSTASMAN ANGUS CATTLE EVALUATION EBVS

CED	DTRS	GL	BW	200	400	600	MCW	Milk
-1.7	-0.9	-3.7	+4.2	+33	+65	+84	+72	+11
49%	35%	50%	72%	65%	61%	62%	60%	50%
SS	DC	CW	EMA	Rib Fat	Rump	RBY %	IMF %	
+0.9	-3.0	+30	+2.8	+1.3	+1.2	-0.2	+0.4	
51%	35%	52%	46%	49%	48%	45%	44%	

**Comments:** Here is another son of M452 who is breeding consistently well. Out of a good-producing cow family, dam has bred 2 other good sale bulls and grandam had 10 calves in 10 years. Q512 is a very well put together bull, with lovely clean shoulders and great top line. Low birth weight followed by plenty of growth with good strong fats. Thick, deep, and square and worth a close look.

Purchaser:

Price: \$

# YEARLING ANGUS BULLS

## Lot: 74 MEADOWSLEA Q222

Birth Date: 14/09/19 ID No: 19134019222

MATAURI REALITY 839

**TAIMATE LAZARUS L12**

TAIMATE 1348

TURIHAUA CRUMP E5 (ET)

**MEADOWSLEA H305**

MEADOWSLEA D186

INDEXES	
SR	HD
+\$111	+\$98

### 2020 TRANSTASMAN ANGUS CATTLE EVALUATION EBVS

CED	DTRS	GL	BW	200	400	600	MCW	Milk
<b>+2.2</b>	<b>-0.3</b>	<b>-5.8</b>	<b>+4.1</b>	<b>+35</b>	<b>+66</b>	<b>+90</b>	<b>+96</b>	<b>+14</b>
54%	44%	63%	72%	67%	64%	65%	62%	56%
SS	DC	CW	EMA	Rib Fat	Rump	RBY %	IMF %	
<b>+3.3</b>	<b>-8.4</b>	<b>+33</b>	<b>+3.4</b>	<b>+3.0</b>	<b>+3.1</b>	<b>-1.0</b>	<b>+1.2</b>	
60%	42%	56%	55%	59%	57%	56%	55%	

**Comments:** The only son of Taimate Lazarus to be offered as a yearling this year. This is an exciting pedigree with dam a high performing Crump daughter who is in our AI programme. She is the dam of lot 7 in this sale as well as a stud bull L349, sold to Linnburn Station for \$11,000. Grandam was also a top producer with 9 calves in 9 years including 4 good sale bulls. Q222 was born a twin and has very impressive figures. He has low birth weight with calving ease and short gestation. Terrific fertility traits here with scrotal size, short days to calving and rib and rump fats all in the top 5% for the breed. Potential here - thick and deep with a very good backend.

**Purchaser:**

**Price: \$**

## Lot: 75 MEADOWSLEA Q393

Birth Date: 10/10/19 ID No: 19134019393

TE MANIA INFINITY 04 379

**GOLDWYN 017**

GOLDWYN 05-595

MEADOWSLEA J479

**MEADOWSLEA M634**

MEADOWSLEA F562

INDEXES	
SR	HD
+\$96	+\$74

### 2020 TRANSTASMAN ANGUS CATTLE EVALUATION EBVS

CED	DTRS	GL	BW	200	400	600	MCW	Milk
<b>-4.4</b>	<b>-4.6</b>	<b>-4.7</b>	<b>+4.5</b>	<b>+32</b>	<b>+65</b>	<b>+88</b>	<b>+95</b>	<b>+13</b>
56%	46%	55%	73%	67%	65%	65%	65%	58%
SS	DC	CW	EMA	Rib Fat	Rump	RBY %	IMF %	
<b>+2.4</b>	<b>-7.3</b>	<b>+36</b>	<b>+0.0</b>	<b>+0.2</b>	<b>+1.0</b>	<b>-0.6</b>	<b>+1.6</b>	
57%	46%	56%	55%	58%	56%	55%	54%	

**Comments:** A quality Goldwyn 17 son here. Moderate birth weight with the strong fertility traits of good scrotal size and short days to calving. Q393 is a nicely balanced bull who is moderate framed and upstanding. Worth a good look here!

**Purchaser:**

**Price: \$**



# YEARLING ANGUS BULLS

## Lot: 76 MEADOWSLEA Q317

Birth Date: 27/09/19 ID No: 19134019317

RANGATIRA 13-38

**MEADOWSLEA M452**

MEADOWSLEA H104

MEADOWSLEA K703

**MEADOWSLEA M459**

MEADOWSLEA K009

INDEXES	
SR	HD
+\$93	+\$87

### 2020 TRANSTASMAN ANGUS CATTLE EVALUATION EBVS

CED	DTRS	GL	BW	200	400	600	MCW	Milk
<b>-0.4</b>	<b>-1.7</b>	<b>-4.9</b>	<b>+4.6</b>	<b>+34</b>	<b>+67</b>	<b>+88</b>	<b>+81</b>	<b>+16</b>
48%	33%	49%	71%	64%	60%	61%	59%	45%
SS	DC	CW	EMA	Rib Fat	Rump	RBV %	IMF %	
<b>+1.9</b>	<b>-5.3</b>	<b>+33</b>	<b>+2.7</b>	<b>+2.2</b>	<b>+2.4</b>	<b>-0.8</b>	<b>+0.9</b>	
48%	31%	51%	45%	49%	48%	45%	44%	

**Comments:** Here is another of these deep, thick, square M452 sons that we really like the look of. Q317 is a moderate birth weight bull with strong growth and those good rib and rump fats that we value so highly. A well-balanced, compact type that looks like he will develop into a top bull.

Purchaser:

Price: \$

## Lot: 77 MEADOWSLEA Q319

Birth Date: 27/09/19 ID No: 19134019319

MEADOWSLEA MEAT MACHINE G914

**MEADOWSLEA N362**

MEADOWSLEA B679

MEADOWSLEA L153

**MEADOWSLEA N150**

MEADOWSLEA L318

INDEXES	
SR	HD
+\$97	+\$96

### 2020 TRANSTASMAN ANGUS CATTLE EVALUATION EBVS

CED	DTRS	GL	BW	200	400	600	MCW	Milk
<b>+4.1</b>	<b>-1.5</b>	<b>-4.8</b>	<b>+3.5</b>	<b>+28</b>	<b>+56</b>	<b>+72</b>	<b>+70</b>	<b>+15</b>
48%	33%	37%	69%	60%	56%	56%	56%	43%
SS	DC	CW	EMA	Rib Fat	Rump	RBV %	IMF %	
<b>+1.7</b>	<b>-5.8</b>	<b>+25</b>	<b>+2.6</b>	<b>+2.1</b>	<b>+2.4</b>	<b>-0.2</b>	<b>-0.1</b>	
42%	32%	47%	41%	45%	43%	42%	41%	

**Comments:** Here is a grandson of Meat Machine and out of a 2-year heifer that goes back to F540 so we expect good maternal and fertility traits with this cross. Q319 has low birth weight with good calving ease and short gestation. He has short days to calving and those important rib and rump fats in the top 5% for the breed. Well balanced and upstanding with a very good hindquarter, clean shoulders and overall good type ideal for heifer mating.

Purchaser:

Price: \$

# YEARLING ANGUS BULLS

## Lot: 78 MEADOWSLEA Q483

Birth Date: 07/11/19 ID No: 19134019483

MEADOWSLEA MEAT MACHINE G914

### MEADOWSLEA K703

MEADOWSLEA H126

TURIHAUA CRUMP E5 (ET)

### MEADOWSLEA K945

MEADOWSLEA E391

INDEXES	
SR	HD
<b>+\$112</b>	<b>+\$97</b>

### 2020 TRANSTASMAN ANGUS CATTLE EVALUATION EBVS

CED	DTRS	GL	BW	200	400	600	MCW	Milk
<b>+3.1</b>	<b>-4.1</b>	<b>-5.3</b>	<b>+3.7</b>	<b>+33</b>	<b>+64</b>	<b>+85</b>	<b>+78</b>	<b>+18</b>
54%	40%	45%	74%	68%	65%	66%	64%	54%
SS	DC	CW	EMA	Rib Fat	Rump	RBY %	IMF %	
<b>+2.4</b>	<b>-8.2</b>	<b>+28</b>	<b>+4.2</b>	<b>+3.1</b>	<b>+3.4</b>	<b>-0.6</b>	<b>-0.1</b>	
59%	41%	56%	54%	57%	56%	54%	53%	

**Comments:** Here is a son of K703 out of a Crump daughter, so we know he will be a thick type! These Crump cows are great performers and K945 has bred a top bull sold to Matt Mackenzie at \$14,000 and another sold to Carrick Station. Grandam is also a top cow producing 7 in 7 including a stud bull. Q483 has terrific figures for heifer mating with low birth weight, calving ease, and short gestation. His short days to calving and rib and rump fats rank him in the top 2% for the breed. A compact, very deep, square bull with a strong coat.

Purchaser:

Price: \$

## Lot: 79 MEADOWSLEA Q188

Birth Date: 05/10/19 ID No: 19134019188

MEADOWSLEA MEAT MACHINE G914

### MEADOWSLEA N362

MEADOWSLEA B679

MEADOWSLEA K018

### MEADOWSLEA N122

MEADOWSLEA H299

INDEXES	
SR	HD
<b>+\$90</b>	<b>+\$83</b>

### 2020 TRANSTASMAN ANGUS CATTLE EVALUATION EBVS

CED	DTRS	GL	BW	200	400	600	MCW	Milk
<b>-2.3</b>	<b>-3.1</b>	<b>-3.6</b>	<b>+6.2</b>	<b>+36</b>	<b>+68</b>	<b>+93</b>	<b>+97</b>	<b>+13</b>
50%	34%	50%	70%	61%	57%	58%	57%	44%
SS	DC	CW	EMA	Rib Fat	Rump	RBY %	IMF %	
<b>+1.7</b>	<b>-5.1</b>	<b>+39</b>	<b>+1.2</b>	<b>+1.5</b>	<b>+2.0</b>	<b>-0.2</b>	<b>+0.3</b>	
44%	32%	48%	42%	46%	44%	42%	41%	

**Comments:** Another deep-bodied bull here from the Meat Machine family, and young genetics featuring again - by a yearling and out of a 2-year heifer. Grandam is breeding well with a stud bull to Glen R Angus (K890). Q188 has a bigger birthweight, plenty of growth in a moderate frame, clean shoulders, and a good backend.

Purchaser:

Price: \$

# YEARLING ANGUS BULLS

## Lot: 80 MEADOWSLEA Q383

Birth Date: 08/10/19 ID No: 19134019383

RANGATIRA COMMODORE 13-19

**RANGATIRA 16209**

KAHARAU 09-8703

TURIHAUA CRUMP E5 (ET)

**MEADOWSLEA M646**

MEADOWSLEA G972

INDEXES	
SR	HD
+\$69	+\$80

### 2020 TRANSTASMAN ANGUS CATTLE EVALUATION EBVS

CED	DTRS	GL	BW	200	400	600	MCW	Milk
<b>-1.9</b>	<b>-5.3</b>	<b>-4.7</b>	<b>+5.0</b>	<b>+31</b>	<b>+61</b>	<b>+87</b>	<b>+101</b>	<b>+13</b>
47%	32%	37%	69%	62%	58%	59%	56%	43%
SS	DC	CW	EMA	Rib Fat	Rump	RBV %	IMF %	
<b>+2.0</b>	<b>-4.7</b>	<b>+33</b>	<b>+3.1</b>	<b>+1.9</b>	<b>+2.0</b>	<b>-0.4</b>	<b>+0.2</b>	
48%	31%	49%	44%	46%	46%	44%	41%	

**Comments:** Here is a moderate-framed, deep-bodied Rangatira son to lead out this final pen of bulls This is the first and only son of this new sire to be offered as a yearling- with a very good line of sons kept for the 2021 winter sale. Terrific head and bone, wide top, and real quality about him with very strong fats. These Rangatira sons all have real potential and this chap is no exception.

**Purchaser:**

**Price: \$**

## Lot: 81 MEADOWSLEA Q467

Birth Date: 10/10/19 ID No: 19134019467

MEADOWSLEA MEAT MACHINE G914

**MEADOWSLEA N368**

MEADOWSLEA G844

MEADOWSLEA K018

**MEADOWSLEA N401**

MEADOWSLEA A460

INDEXES	
SR	HD
+\$111	+\$101

### 2020 TRANSTASMAN ANGUS CATTLE EVALUATION EBVS

CED	DTRS	GL	BW	200	400	600	MCW	Milk
<b>+2.8</b>	<b>+0.8</b>	<b>-4.3</b>	<b>+4.0</b>	<b>+36</b>	<b>+70</b>	<b>+89</b>	<b>+78</b>	<b>+14</b>
43%	32%	42%	56%	59%	56%	57%	55%	44%
SS	DC	CW	EMA	Rib Fat	Rump	RBV %	IMF %	
<b>+1.6</b>	<b>-4.4</b>	<b>+38</b>	<b>+3.6</b>	<b>+1.9</b>	<b>+2.7</b>	<b>-0.4</b>	<b>+0.7</b>	
47%	33%	47%	43%	46%	46%	43%	42%	

**Comments:** Here is another member of the Meat Machine family - by a yearling bull and out of a 2-year heifer. Very good heifer mating figures with low birth weight, good calving ease, and very strong growth along with terrific easy doing fats in the top 5% of the breed. Plenty of length and stretch about this fellow, together with a clean shoulder and great top-line.

**Purchaser:**

**Price: \$**

# YEARLING ANGUS BULLS

## Lot: 82 MEADOWSLEA Q455

Birth Date: 26/10/19 ID No: 19134019455

MEADOWSLEA MEAT MACHINE G914

### MEADOWSLEA K703

MEADOWSLEA H126

GOLDWYN 017

### MEADOWSLEA M625

MEADOWSLEA H149

INDEXES	
SR	HD
+\$131	+\$95

#### 2020 TRANSTASMAN ANGUS CATTLE EVALUATION EBVS

CED	DTRS	GL	BW	200	400	600	MCW	Milk
+2.1	-1.7	-5.0	+3.4	+32	+64	+82	+70	+18
47%	36%	44%	63%	64%	62%	62%	60%	51%
SS	DC	CW	EMA	Rib Fat	Rump	RBY %	IMF %	
+2.5	-9.1	+29	+4.7	+3.2	+3.6	-0.5	+0.2	
56%	38%	53%	52%	55%	53%	51%	50%	

**Comments:** A thick, deep-bodied bull from the Meat Machine blood line once again. Exceptional figures for heifer mating with low birthweight, calving ease and short gestation. Very impressive fertility traits with good scrotal size, while his short days to calving and rib and rump fats are in the top 1% of the breed. All these traits combine to give an SRI index in the top 10% of the breed. Very compact with a clean shoulder and good coat. A good pick!

Purchaser:

Price: \$

## Lot: 83 MEADOWSLEA Q352

Birth Date: 01/10/19 ID No: 19134019352

TURIHAUA CRUMBLE Y167

### TURIHAUA CRUMP E5 (ET)

TURIHAUA Q263

MEADOWSLEA J479

### MEADOWSLEA M1079

MEADOWSLEA H190

INDEXES	
SR	HD
+\$95	+\$73

#### 2020 TRANSTASMAN ANGUS CATTLE EVALUATION EBVS

CED	DTRS	GL	BW	200	400	600	MCW	Milk
-4.1	-4.4	-4.0	+4.4	+31	+61	+83	+84	+13
56%	47%	58%	73%	68%	65%	65%	65%	60%
SS	DC	CW	EMA	Rib Fat	Rump	RBY %	IMF %	
+1.9	-6.2	+26	+2.9	+1.4	+0.9	+0.0	+0.3	
59%	50%	61%	59%	63%	61%	62%	59%	

**Comments:** Here is a very good compact Crump son. Good-breeding female line with grandam breeding a stud sold to Turihaua Angus, and another sold at \$11,000 to Hand Farming. Q352 has moderate birth weight followed by good growth, with short days to calving and the important strong rib and rump fats. A very well-balanced, lovely clean shouldered bull with a terrific head and great topline.

Purchaser:

Price: \$

# YEARLING ANGUS BULLS

## Lot: 84 MEADOWSLEA Q457

Birth Date: 29/10/19 ID No: 19134019457

TURIHAUA CRUMP E5 (ET)

### MEADOWSLEA K811

MEADOWSLEA E399

RATANUI LAD 21

### MEADOWSLEA L351

MEADOWSLEA D168

INDEXES	
SR	HD
+\$85	+\$96

### 2020 TRANSTASMAN ANGUS CATTLE EVALUATION EBVS

CED	DTRS	GL	BW	200	400	600	MCW	Milk
+2.1	-6.0	-4.8	+4.2	+33	+62	+84	+88	+14
51%	37%	42%	72%	65%	62%	63%	61%	49%

SS	DC	CW	EMA	Rib Fat	Rump	RBV %	IMF %
+1.8	-4.7	+31	+3.5	+1.2	+1.3	+0.0	+0.2
52%	38%	53%	49%	53%	51%	50%	48%

**Comments:** A bit more length and stretch in this K811 son. Clean shoulders and a good topline. Dam is breeding well, she also produced lot 5 this sale, and grandam producing a top yearling sold in last year's sale to Peak Hill Station. Q457 has moderate birthweight with calving ease and strong rib and rump fats. A very good type.

Purchaser:

Price: \$

## Lot: 85 MEADOWSLEA Q337

Birth Date: 30/09/19 ID No: 19134019337

RANGATIRA 13-38

### MEADOWSLEA M452

MEADOWSLEA H104

MEADOWSLEA F540

### MEADOWSLEA L463

MEADOWSLEA A476

INDEXES	
SR	HD
+\$60	+\$91

### 2020 TRANSTASMAN ANGUS CATTLE EVALUATION EBVS

CED	DTRS	GL	BW	200	400	600	MCW	Milk
+1.3	-1.9	-5.8	+4.4	+33	+67	+89	+80	+19
49%	35%	53%	71%	64%	60%	61%	60%	49%

SS	DC	CW	EMA	Rib Fat	Rump	RBV %	IMF %
+1.4	-2.4	+34	+1.1	+2.0	+2.2	-1.5	+1.1
51%	36%	52%	47%	51%	50%	47%	46%

**Comments:** Another of these square, deep-bodied M452 sons that have been a feature all through this catalogue. Out of a young F540 cow which should be a very good cross. Moderate birth weight with short gestation and good rib and rump fats once again. Good barrel and great backend.

Purchaser:

Price: \$

# YEARLING ANGUS BULLS

## Lot: 86 MEADOWSLEA Q501

Birth Date: 14/11/19 ID No: 19134019501

TURIROA RAMBLE 11541 (ET)

**TURIROA 14830 (ET)**

TURIROA TULIP 459

MEADOWSLEA MEAT MACHINE G9

**MEADOWSLEA M1045**

MEADOWSLEA 159

INDEXES	
SR	HD
+\$85	+\$86

### 2020 TRANSTASMAN ANGUS CATTLE EVALUATION EBVS

CED	DTRS	GL	BW	200	400	600	MCW	Milk
<b>-2.0</b>	<b>-2.3</b>	<b>-4.1</b>	<b>+5.3</b>	<b>+36</b>	<b>+66</b>	<b>+92</b>	<b>+94</b>	<b>+11</b>
51%	36%	41%	72%	66%	63%	64%	61%	50%
SS	DC	CW	EMA	Rib Fat	Rump	RBV %	IMF %	
<b>+2.0</b>	<b>-2.9</b>	<b>+38</b>	<b>+2.8</b>	<b>+1.2</b>	<b>+1.7</b>	<b>+0.4</b>	<b>-0.3</b>	
54%	34%	53%	49%	52%	51%	48%	48%	

**Comments:** Here is a Turoa 14830 son, out of a Meat Machine daughter who bred a very good son sold at lot 72 in the 2020 winter sale to Bradley Catto \$13,000. Grandam was also a top cow who bred retained stud sire J479. A clean-shouldered, upstanding type of bull with good fat covers.

Purchaser:

Price: \$

## Lot: 87 MEADOWSLEA Q335

Birth Date: 29/09/19 ID No: 19134019335

TE MANIA INFINITY 04 379

**GOLDWYN 017**

GOLDWYN 05-595

MEADOWSLEA J429

**MEADOWSLEA L111**

MEADOWSLEA J441

INDEXES	
SR	HD
+\$116	+\$99

### 2020 TRANSTASMAN ANGUS CATTLE EVALUATION EBVS

CED	DTRS	GL	BW	200	400	600	MCW	Milk
<b>+4.1</b>	<b>+0.8</b>	<b>-5.5</b>	<b>+1.1</b>	<b>+27</b>	<b>+58</b>	<b>+71</b>	<b>+58</b>	<b>+15</b>
55%	46%	53%	75%	69%	66%	67%	67%	59%
SS	DC	CW	EMA	Rib Fat	Rump	RBV %	IMF %	
<b>+2.3</b>	<b>-6.8</b>	<b>+29</b>	<b>+0.3</b>	<b>+0.7</b>	<b>+1.4</b>	<b>-1.1</b>	<b>+2.2</b>	
57%	48%	58%	56%	60%	58%	56%	56%	

**Comments:** A Goldwyn son with nice quality, clean shoulders, and a very meaty back end. Q335 has a super low birth weight with calving ease and short gestation. Very good fertility traits with good scrotal, very short days to calving and good rib and rump fats. Thick and deep, he is a very good pick for calving heifers trouble-free.

Purchaser:

Price: \$

# YEARLING ANGUS BULLS

## Lot: 88 MEADOWSLEA Q494

Birth Date: 12/11/19 ID No: 19134019494

TURIHAUA CRUMP E5 (ET)

**MEADOWSLEA K811**

MEADOWSLEA E399

RANGATIRA 13-38

**MEADOWSLEA M481**

MEADOWSLEA F549

INDEXES	
SR	HD
+\$78	+\$74

### 2020 TRANSTASMAN ANGUS CATTLE EVALUATION EBVS

CED	DTRS	GL	BW	200	400	600	MCW	Milk
-4.7	-5.3	-3.5	+6.0	+36	+68	+94	+87	+16
51%	37%	54%	72%	61%	59%	61%	60%	48%
SS	DC	CW	EMA	Rib Fat	Rump	RBV %	IMF %	
+2.2	-4.0	+33	+3.5	+1.7	+2.2	-0.3	+0.5	
52%	36%	51%	49%	54%	52%	50%	49%	

**Comments:** A well-bred bull here by K811, out of a cow by the \$100,000 Rangatira 13-38. Grandam is a top cow, producing 8 in 8. A compact-type bull with clean shoulders and a good top-line. He has plenty of growth with very strong rib and rump fats.

Purchaser:

Price: \$

## Lot: 89 MEADOWSLEA Q370

Birth Date: 03/10/19 ID No: 19134019370

S CHISUM 6175 (IMP USA)

**TURIHAUA LOYALTY L44 (ET)**

TURIHAUA D224 (ET)

GLANWORTH WAIGROUP 0816

**MEADOWSLEA G895**

MEADOWSLEA D056

INDEXES	
SR	HD
+\$130	+\$88

### 2020 TRANSTASMAN ANGUS CATTLE EVALUATION EBVS

CED	DTRS	GL	BW	200	400	600	MCW	Milk
-0.4	+1.9	-4.0	+3.7	+36	+66	+82	+65	+11
54%	44%	54%	74%	68%	65%	66%	64%	57%
SS	DC	CW	EMA	Rib Fat	Rump	RBV %	IMF %	
+2.0	-6.1	+37	+2.8	+1.2	+1.8	-0.2	+0.8	
60%	43%	57%	56%	60%	57%	56%	55%	

**Comments:** Here is another Loyalty son out of a very good cow. G895 has produced a stud bull later sold to Hand farming for \$9,000, and other good sons sold to Rocky Point Station and Peraki Station. Q370 has a low birth weight followed by good growth. He is strong in the fertility traits with good scrotal size, short days to calving, and very good rib and rump fats - all combining to give a very good SRI index.

Purchaser:

Price: \$

# YEARLING ANGUS BULLS

## Lot: 90 MEADOWSLEA Q116

Birth Date: 01/09/19 ID No: 19134019116

MEADOWSLEA K703

### MEADOWSLEA N157

MEADOWSLEA L086

MEADOWSLEA L240

### MEADOWSLEA N459

MEADOWSLEA K792

INDEXES	
SR	HD
+\$125	+\$100

### 2020 TRANSTASMAN ANGUS CATTLE EVALUATION EBVS

CED	DTRS	GL	BW	200	400	600	MCW	Milk
+5.3	-2.5	-5.2	+2.2	+29	+61	+74	+64	+16
47%	29%	32%	69%	62%	57%	59%	55%	38%
SS	DC	CW	EMA	Rib Fat	Rump	RBY %	IMF %	
+2.1	-8.2	+32	+4.3	+2.8	+3.5	-1.2	+0.8	
45%	27%	47%	40%	44%	43%	39%	38%	

**Comments:** Here is a good pick late in the sale. Once again our young genetics are leading the way with this chap being the son of a yearling bull and out of a 2-year heifer. Super heifer mating figures once again with exceptionally low birth weight, great calving ease and short gestation. Top fertility traits as well, with short days to calving and positive rib and rump fat in the top 5% for the breed, all combine to give him a very strong SRI Index. He has clean shoulders, a good top-line, and a strong backend.

Purchaser:

Price: \$

## Lot: 91 MEADOWSLEA Q397

Birth Date: 11/10/19 ID No: 19134019397

TE MANIA INFINITY 04 379

### GOLDWYN 017

GOLDWYN 05-595

TURHAUA CRUMP E5 (ET)

### MEADOWSLEA L125

MEADOWSLEA D101

INDEXES	
SR	HD
+\$104	+\$95

### 2020 TRANSTASMAN ANGUS CATTLE EVALUATION EBVS

CED	DTRS	GL	BW	200	400	600	MCW	Milk
+2.5	-3.3	-6.2	+2.6	+31	+63	+85	+84	+16
53%	47%	62%	65%	66%	64%	64%	64%	60%
SS	DC	CW	EMA	Rib Fat	Rump	RBY %	IMF %	
+1.9	-8.2	+30	+0.5	+1.8	+2.3	-1.3	+1.2	
59%	50%	58%	57%	60%	58%	58%	57%	

**Comments:** We always keep a good one till last and this Goldwyn 17 son, out of a Crump cow, has a very strong pedigree. Dam L125 bred lot 69 in the 2020 winter sale sold to Waewaepa Station at \$12,500. Grandam D101 is the mother of Meat Machine, and was sold in the 2019 female sale to Pikoburn Angus. Q397 has great heifer mating figures with very low birth weight, good calving ease, and short gestation. Strong fertility once again with short days to calving and rib and rump fats in the top 2% for the breed. A clean-shouldered bull with a good top, strong hindquarter and a pedigree to match.

Purchaser:

Price: \$



www.rurallivestock.co.nz

NZ Owned & Operated



**Secure a deal with**



**Rural Livestock**

**STUD STOCK**

Anthony Cox

0272 083 071

**LIVESTOCK MANAGER**

Simon Cox

0272 097 665

**LIVESTOCK REPRESENTATIVES**

Donald Cooke

0274 730 854

Quinten Botha

0274 730 885

Fraser Adams

0274 730 823

# Meadowslea Hill Bred Rams



High Survival, High Performance Romneys



1/2 Romney x 1/2 Perendale (Romdale)  
1/2 Romney x 1/4 Perendale x 1/4 Texel



MyoM&K

1/2 Romney X 1/2 Texel  
3/4 Romney X 1/4 Texel



MyoM&K

kelso, Romney (1/2 kelso, X 1/2 Romney)



MyoM&K

kelso, Terminal Tough Hill-bred Sire



MyoM&K

kelso, Maternal Hill-bred Maternal



27 YEARS UNSHEPHERDED ON HILL-COUNTRY

## RAM SALE 300 RAMS

Thursday November 26th  
On-Farm, Fairlie

and  
Online at [www.meadowslea.co.nz](http://www.meadowslea.co.nz)

through the Yourbid platform.

David Giddings 027 2299760

George Giddings 027 656 3323

[giddingsfamily@xtra.co.nz](mailto:giddingsfamily@xtra.co.nz)



**FOR ALL YOUR  
OFFSET & DIGITAL PRINTING**

- ✓ Sale catalogues
- ✓ Invoice books
- ✓ Letterheads
- ✓ Business cards
- ✓ Consignment books
- ✓ Envelopes
- ✓ Personalised calendars
- ✓ Rack cards

Locally owned & operated  
our team are dedicated to producing  
work of the highest standard.

For this service call us on:  
(03) 684 5731 or [beynon@callplus.net.nz](mailto:beynon@callplus.net.nz)  
4b Sefton Street Timaru

---

# NOTES

---

---

# NOTES

---

---

# NOTES

---

# 2 YEAR OLDS

TAG	LOT	TAG	LOT
504.....	26	727.....	4
514.....	1	771.....	14
520.....	25	808.....	10
530.....	33	809.....	29
537.....	2	814.....	20
548.....	8	817.....	28
554.....	7	820.....	22
576.....	3	824.....	31
602.....	32	841.....	23
633.....	12	848.....	30
648.....	21	859.....	15
655.....	16	875.....	17
668.....	19	879.....	6
711.....	13	911.....	27
715.....	11	916.....	18
716.....	24	18711.....	9
725.....	5		

# YEARLINGS

TAG	LOT	TAG	LOT
110.....	56	352.....	83
114.....	45	359.....	67
116.....	90	363.....	66
148.....	64	364.....	53
167.....	37	370.....	89
188.....	79	372.....	34
201.....	44	376.....	39
208.....	63	383.....	80
220.....	70	384.....	65
222.....	74	386.....	40
224.....	51	388.....	59
227.....	38	389.....	43
251.....	50	393.....	75
257.....	42	397.....	91
278.....	61	400.....	52
282.....	49	410.....	57
284.....	48	411.....	35
285.....	41	455.....	82
296.....	46	457.....	84
306.....	55	467.....	81
317.....	76	476.....	62
319.....	77	483.....	78
322.....	54	494.....	88
323.....	60	501.....	86
335.....	87	512.....	73
337.....	85	517.....	71
339.....	47	521.....	69
344.....	72	528.....	68
350.....	58	530.....	36

# Premier Bull Cover

## ***What is Premier Bull cover?***

All bulls auctioned at this sale up to the value of \$25,000 will automatically be covered under FMG's Premier Bull cover for 14 days at no cost to the purchaser.

## ***Length of cover***

To extend cover for the specified bull beyond 14 days you need to tick Premier Bull cover 12 months on the Purchaser Instruction and Insurance Slip in this catalogue. The specified bull is then covered for the remaining period of 12 months. The premium is payable to FMG and is in addition to the purchase price of the bull.

If you require an alternative cover period talk to an FMG representative.

## ***Your bull's value***

Any bull covered under this policy must be purchased for \$25,000 or less.

For any bull purchased over \$25,000 talk to an FMG representative.

## ***During the period of insurance, the specified animal is covered for:***

- Death or infertility as a result of accident, disease or illness.
- Transit.
- Theft.

## ***What we will pay***

Fair market value of your specified bull, less any amount you receive for the sale of the carcass, up to the amount shown on the insurance certificate.

## ***Disclaimer***

Please note this is only a summary of the product and is subject to our specific product documentation. For full details, you should refer to the policy document. You can get these documents, and any other information you need, from your FMG representative, by calling us or visiting our website.



# MEADOWSLEA SPRING ANGUS BULL SALE

## PURCHASER'S INSTRUCTION SLIP

(To be handed into the Auctioneers before leaving sale)

Name:.....

Address: .....

.....

Telephone:..... NAIT no.#.....

Email: .....

### Purchases:

Lot No:..... \$..... Lot No..... \$.....

Lot No:..... \$..... Lot No..... \$.....

Lot No:..... \$..... Lot No..... \$.....

Lot No:..... \$..... Lot No..... \$.....

Lot No:..... \$..... Lot No..... \$.....

Lot No:..... \$..... Lot No..... \$.....

Lot No:..... \$..... Lot No..... \$.....

Lot No:..... \$..... Lot No..... \$.....

Lot No:..... \$..... Lot No..... \$.....

Lot No:..... \$..... Lot No..... \$.....

Transport Company.....

Account to: .....

### FMG Insurance Cover

- 14 days - FMG Premium Bull cover (at no charge)
- Extend cover to 12 months - FMG Premium Bull cover

*Please select your preferred payment method:*

- FMG direct
- Farmlands
- Ruralco

Deliver to:.....

Signature of Purchaser: .....

Date:.....

NO VERBAL INSTRUCTIONS CAN BE ACCEPTED



# PROVEN TO PERFORM IN A TOUGH TESTING GROUND



Meadowslea stud cows live in a different world to most Angus Stud cows in NZ and have naturally developed into a type that thrives in their environment. Moderate framed cows that have deep wide bodies and carry good fat covers are proven to be the most productive in this country. The Use of Strong NZ bloodlines ensures this suitability for the environment will continue.

At Meadowslea our strong focus on the key Maternal and Fertility traits is driven by 30 years of successfully mating yearling heifers, the results are clear to see. Many of our clients, in some of NZ's tough environments, are successfully calving heifers as 2yr olds and achieving outstanding conception and re-breeding results.

It is no surprise then that Meadowslea bulls shift and perform for clients in hill country.

## PROVEN WHERE IT COUNTS!



# Our Two Senior Sires continue to be Trait Leaders

## Trait Leaders in Australasia for short DAYS to CALVING

The important fertility trait measuring how quickly their daughters get in calf and rebreed each year. This is a great endorsement of the focus we place on fertility and maternal traits in our breeding programme.



**MEADOWSLEA F540** – now 10yr old and still going strong. He ranks in the top 10% of the breed for the important Maternal and Fertility traits of Calving Ease, Milk, Scrotal size, Short Days to Calving, and Rib and Rump Fat. His Short Gestation figure is in the top 1% in Australasia. **SEMEN AVAILABLE**



**TURIHAUA CRUMP E5** – (born 2009) – Now 11 years old with over 400 offspring in NZ and Australia. Deep thick traditional Angus Hill country type. Outstanding progeny always sought after. His young daughters are proving exceptionally fertile and productive resulting in him now being a trait leader for Short Days to Calving at minus 10 days. **SEMEN AVAILABLE**